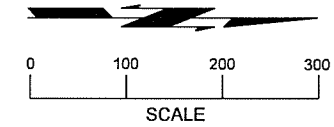


**TRAFFIC CONTROL KEY NOTES**

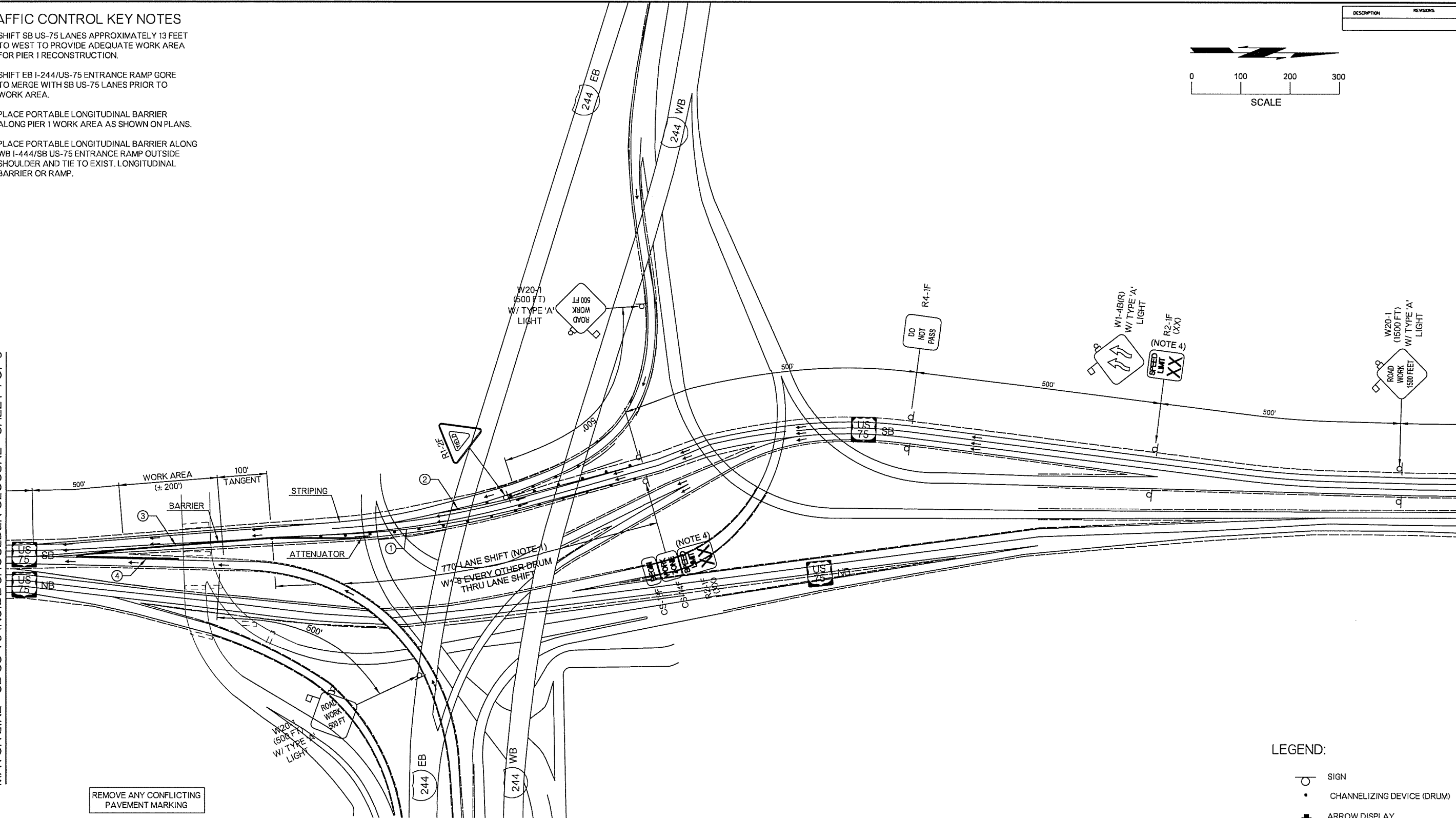
- ① SHIFT SB US-75 LANES APPROXIMATELY 13 FEET TO WEST TO PROVIDE ADEQUATE WORK AREA FOR PIER 1 RECONSTRUCTION.
- ② SHIFT EB I-244/US-75 ENTRANCE RAMP GORE TO MERGE WITH SB US-75 LANES PRIOR TO WORK AREA.
- ③ PLACE PORTABLE LONGITUDINAL BARRIER ALONG PIER 1 WORK AREA AS SHOWN ON PLANS.
- ④ PLACE PORTABLE LONGITUDINAL BARRIER ALONG WB I-444/SB US-75 ENTRANCE RAMP OUTSIDE SHOULDER AND TIE TO EXIST. LONGITUDINAL BARRIER OR RAMP.

DESCRIPTION	REVISIONS	DATE



MATCHLINE - SB US-75 INSIDE SHOULDER CLOSURE - SHEET 1 OF 3

MATCHLINE - SB US-75 INSIDE SHOULDER CLOSURE - SHEET 3 OF 3



REMOVE ANY CONFLICTING PAVEMENT MARKING

**NOTE 1:**  
MAXIMUM SPACING BETWEEN CHANNELIZING DEVICES (FEET) SHALL BE EQUAL TO THE POSTED SPEED LIMIT (M.P.H.) WITH THE FOLLOWING EXCEPTIONS. SPACING SHALL NOT EXCEED 25 FEET FOR CONES OR TUBE CHANNELIZERS. SPACING SHALL NOT EXCEED 50 FEET FOR TYPE II BARRICADES, VERTICAL PANELS OR DRUMS.

**NOTE 2:**  
MAXIMUM SPACING BETWEEN CHANNELIZING DEVICES (FEET) SHALL BE EQUAL TO TWICE THE POSTED SPEED LIMIT (M.P.H.) WITH THE FOLLOWING EXCEPTIONS. SPACING SHALL NOT EXCEED 50 FEET FOR CONES OR TUBE CHANNELIZERS. SPACING SHALL NOT EXCEED 100 FEET FOR TYPE II BARRICADES, VERTICAL PANELS OR DRUMS.

**NOTE 3:**  
A MINIMUM OF FIVE (5) CHANNELIZING DEVICES SHALL BE PLACED THROUGH THIS TAPER.

**NOTE 4:**  
CONSTRUCTION SPEED LIMIT TO BE DETERMINED BY THE DIVISION ENGINEER.

**NOTE 5:**  
DOWNSTREAM TAPERS SHALL CONTAIN A MINIMUM OF FOUR (4) CHANNELIZING DEVICES.

**NOTE 6:**  
SEE "SUMMARY OF PAY QUANTITIES (TRAFFIC)" FOR DETAIL

FOR ADDITIONAL INFORMATION ABOUT TAPER LENGTHS AND SPACING OF CHANNELIZING DEVICES, SEE STANDARD DRAWING TCS2-1-(LATEST REVISIONS).

- LEGEND:**
- SIGN
  - CHANNELIZING DEVICE (DRUM)
  - ARROW DISPLAY
  - ATTENUATOR
  - TYPE III BARRICADE
  - PORT. LONGITUDINAL BARRIER
  - BARRIER

DESIGN		<b>OKLAHOMA DEPARTMENT OF TRANSPORTATION</b>  TRAFFIC CONTROL PLAN SB US-75 INSIDE SHOULDER CLOSURE SHEET 2 OF 3  STATE JOB NO. 28865(04) SHEET NO. 82 TULSA CO. 2ND STREET
DRAWN		
CHECKED		
APPROVED		
CREW		