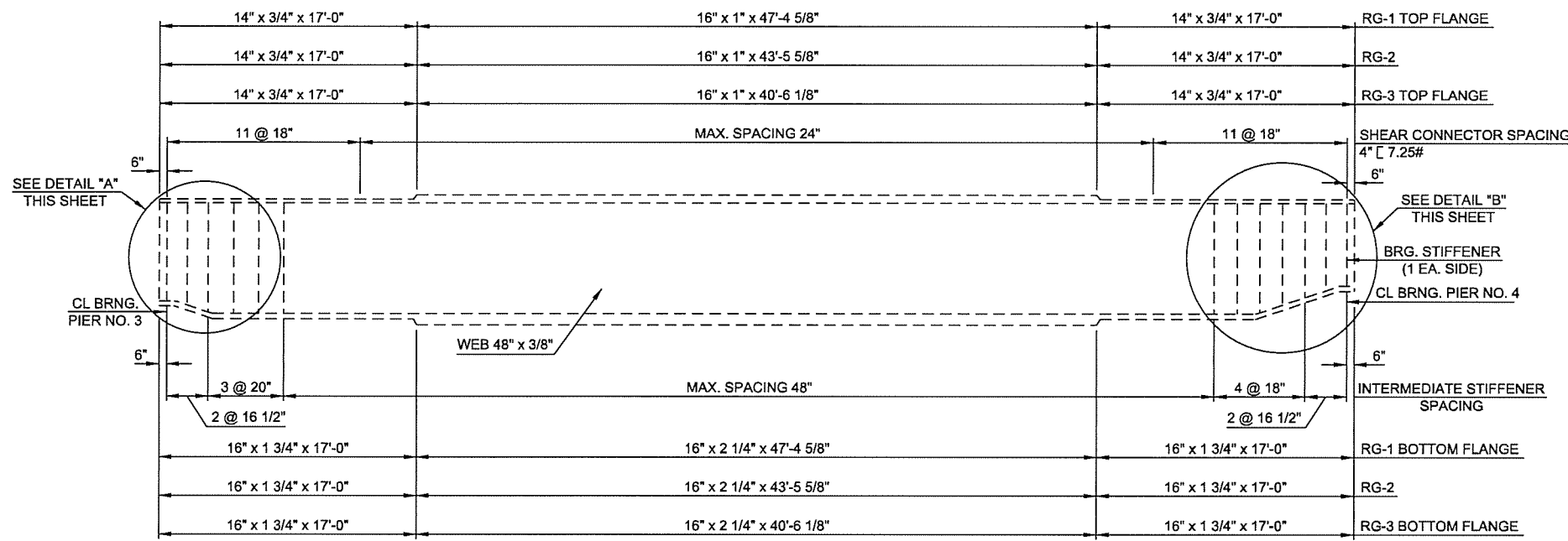
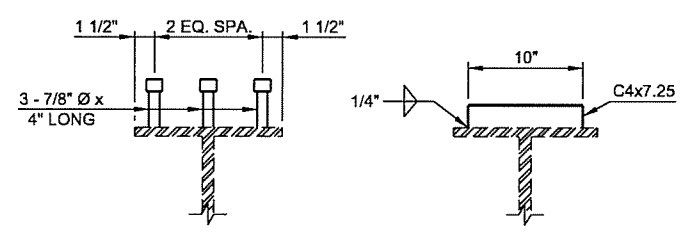


DESCRIPTION	REVISIONS	DATE



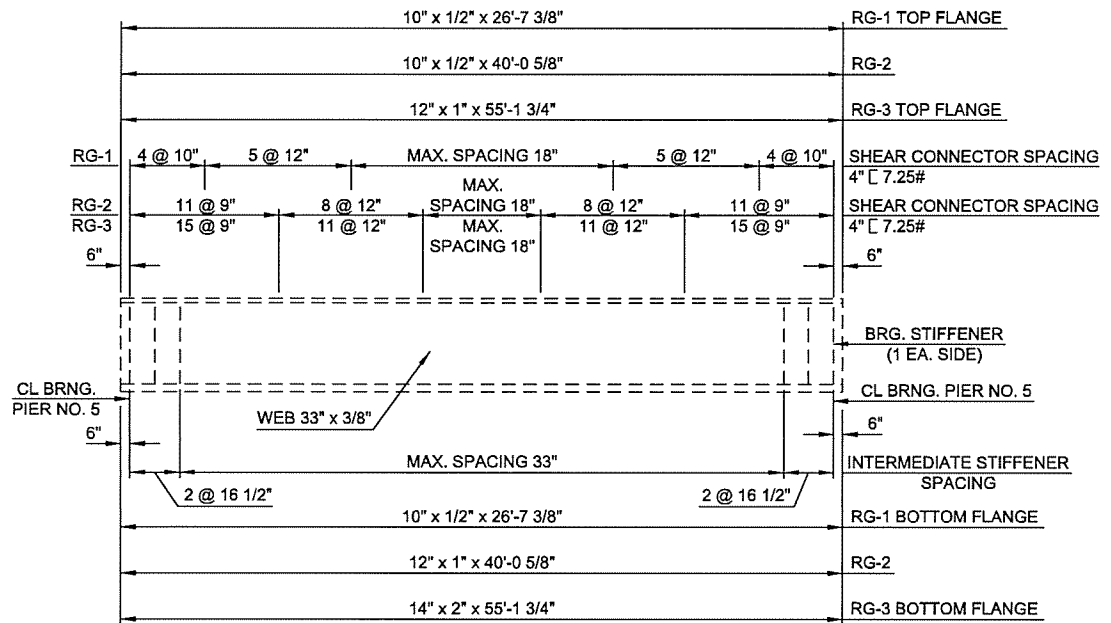
SPAN NO. 1
GIRDERS RG-1 THRU RG-3
(BEARING STIFFENERS ARE 8 3/4" x 3/4")



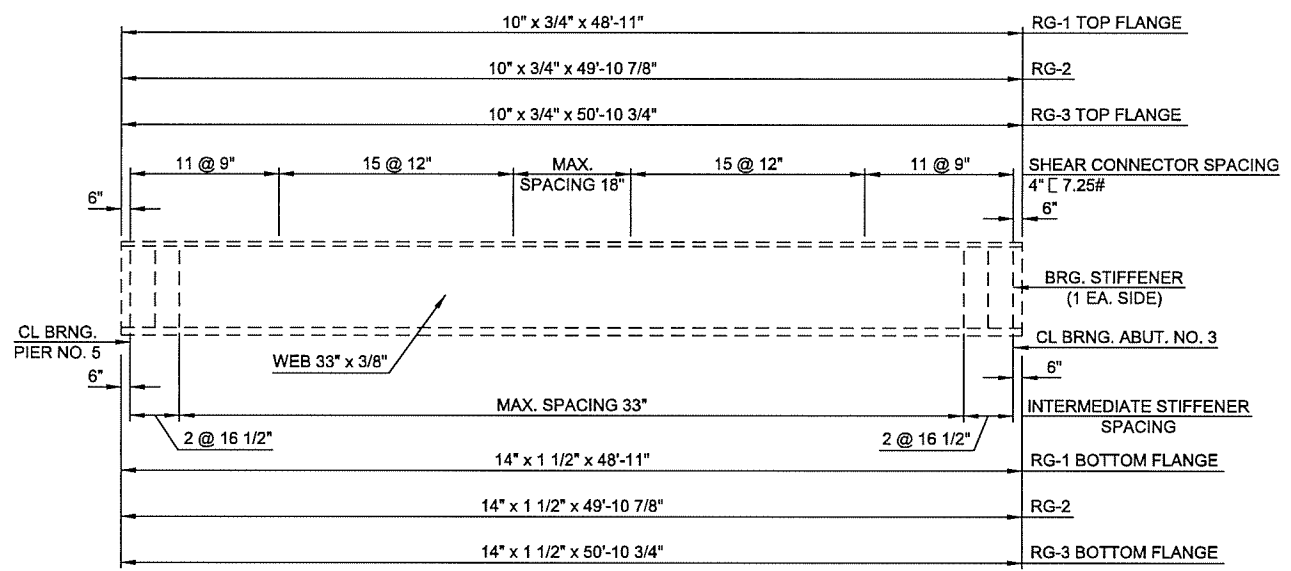
STUD SHEAR CONNECTOR
CHANNEL SHEAR CONNECTOR (TYP.)

SHEAR CONNECTOR DETAILS

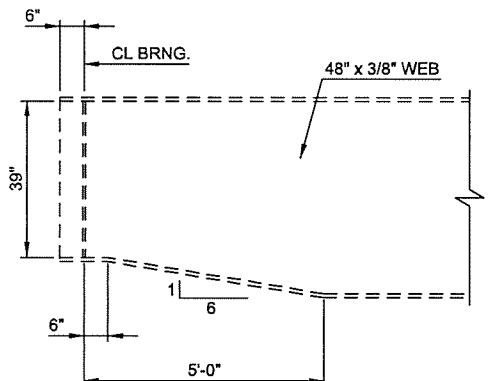
NOTE:
CONTRACTOR SHALL TAKE EXTRA CARE IN REMOVING BRIDGE DECK IN ORDER TO NOT DAMAGE EXISTING CHANNEL SHEAR CONNECTORS. DAMAGED OR MISSING CONNECTORS SHALL BE REPLACED AT NO ADDITIONAL COST TO THE PROJECT. REPLACEMENT CONNECTORS CAN BE CHANNELS OR STUDS AS SHOWN.



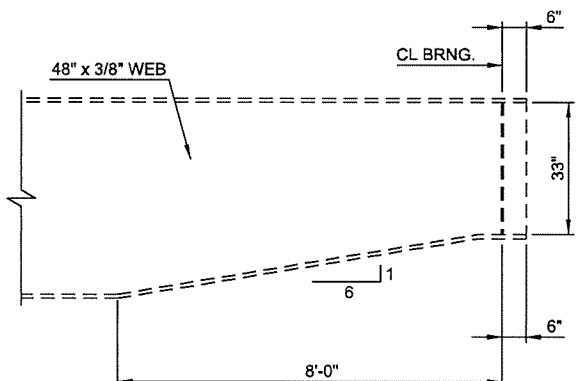
SPAN NO. 2
GIRDERS RG-1 THRU RG-3
(RG-1 BEARING STIFFENERS ARE 4 3/4" x 1/2")
(RG-2 BEARING STIFFENERS ARE 5 3/4" x 1/2")
(RG-3 BEARING STIFFENERS ARE 6 3/4" x 1/2")



SPAN NO. 3
GIRDERS RG-1 THRU RG-3
(BEARING STIFFENERS ARE 6 3/4" x 1/2")



DETAIL "A"



DETAIL "B"

NOTE:
DETAILS SHOWN ARE FOR INFORMATION ONLY. SEE GENERAL NOTES REGARDING DAMAGE TO EXISTING STEEL. INTERMEDIATE STIFFENERS ARE 4 1/2" x 5/16" PLACED ON ALTERNATE SIDES OF INTERIOR GIRDERS AND ON BOTH SIDES OF EXTERIOR GIRDERS AT EACH STIFFENER LOCATION. ALL BEARING STIFFENERS AND THEIR CONNECTING CROSSFRAMES ARE CONSTRUCTED VERTICALLY.

DESIGN	JSH	2-15	OKLAHOMA DEPARTMENT OF TRANSPORTATION STEEL DETAILS SHEET 1 OF 2 STATE JOB NO. 28865(04) SHEET NO. 68 TULSA CO. 2ND STREET
DRAWN	MRM	2-15	
CHECKED	LWN	3-16	
APPROVED			
SQUAD	TT		

N:\11399\200-11399-13001-05\CAD\SheetFiles\IP 28865 (04) -68-BR.B-Steel_Details.1.dgn 6/7/2016