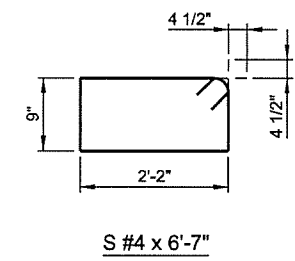
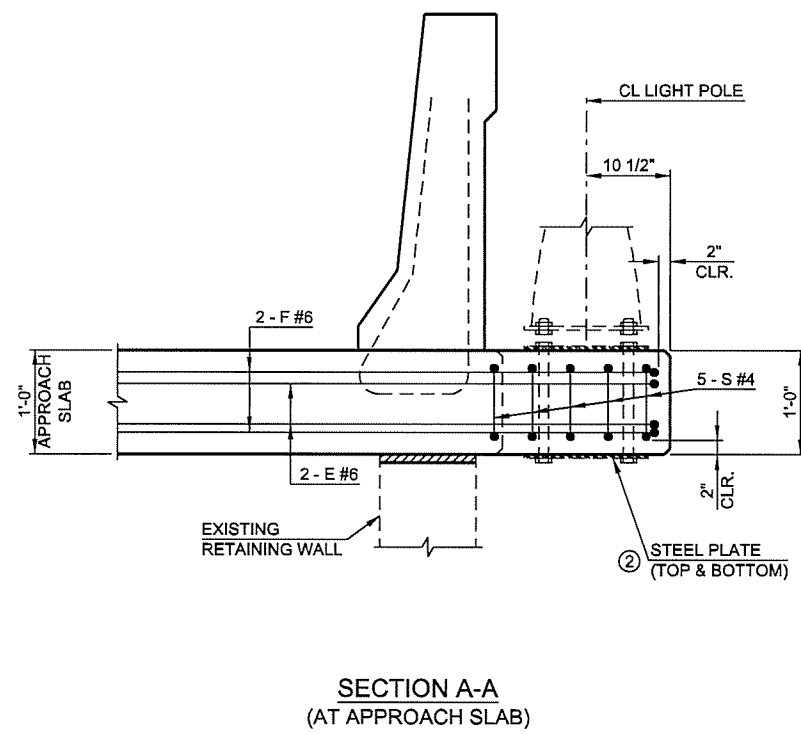
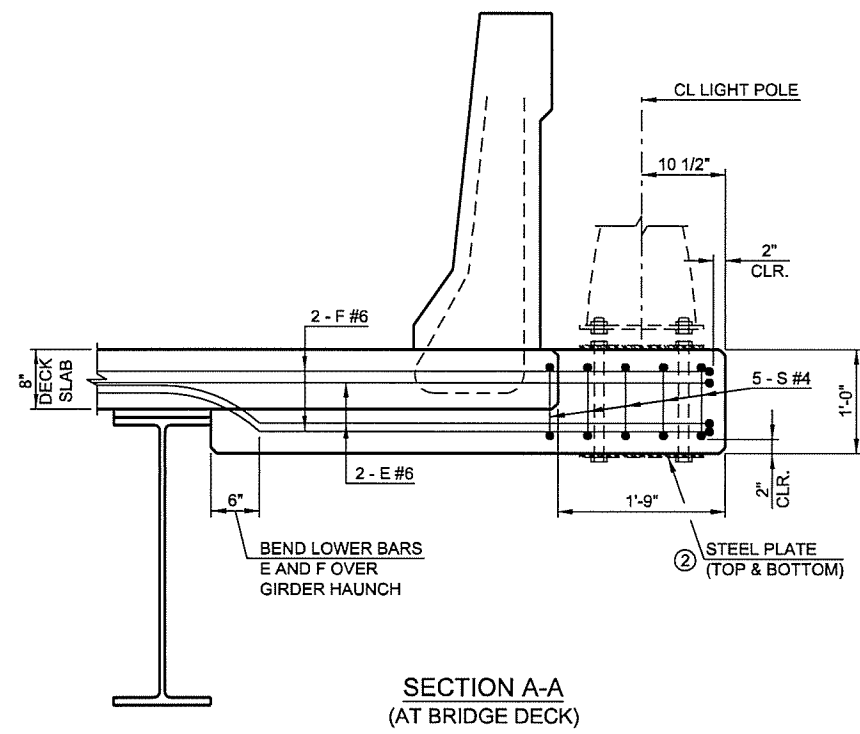


- ① ANCHOR BOLTS SHALL BE 1 1/4" DIAMETER FOR 15" DIAMETER BOLT PATTERN AND 1" DIAMETER FOR 14" DIAMETER BOLT PATTERN OR LESS. HOLES IN STEEL PLATES AND CONCRETE FOR ANCHOR BOLTS SHALL BE 1 1/4" DIAMETER FOR 1" DIAMETER BOLTS AND 1 1/2" DIAMETER FOR 1 1/4" BOLTS.
- ② STEEL PLATES SHALL BE 1/2" x 15 1/2" x 15 1/2"

LIGHTING BRACKET BAR LIST				
FOR INFORMATION ONLY (NOT INCLUDED IN QUANTITIES) (ONE SHOWN, TWO REQUIRED)				
MARK	SIZE	NO.	FORM	LENGTH
EPOXY COATED REINFORCING BARS				
E	#6	2	BNT.	16'-0"
F	#6	4	BNT.	14'-5"
S	#4	5	BNT.	6'-7"



- LIGHTING BRACKET NOTES:
- COST OF CONSTRUCTING THE LIGHTING BRACKET AS SHOWN, INCLUDING CONCRETE AND EPOXY COATED REINFORCING SHALL BE INCLUDED IN THE TRAFFIC POLE UNIT COST PER EACH REMOVE AND RESET LIGHT POLE.
 - THE ESTIMATED QUANTITIES OF EACH LIGHTING BRACKET ARE 0.20 CUBIC YARDS OF CONCRETE, 157 POUNDS OF EPOXY COATED REINFORCING STEEL, AND 104 POUNDS OF STRUCTURAL STEEL INCLUDING ANCHOR BOLTS, NUTS, WASHERS, AND 2 PLATES.
 - THE CONTRACTOR SHALL VERIFY THE SIZE OF THE BOLT HOLE PATTERN PRIOR TO CONSTRUCTION OF THE LIGHTING BRACKETS, MAXIMUM BOLT PATTERN DIAMETER FOR LIGHTING BRACKET SHOWN IS 15".
 - DO NOT PLACE LIGHTING POLE UNTIL AFTER THE BRIDGE DECK OR APPROACH SLAB HAS BEEN CONSTRUCTED AND CONCRETE HAS OBTAINED ADEQUATE STRENGTH.



LIGHTING BRACKET DETAILS

DESIGN	JSH	2-16	OKLAHOMA DEPARTMENT OF TRANSPORTATION
DRAWN	MRM	2-16	
CHECKED	LWN	3-16	
APPROVED			
SQUAD	TT		

2ND STREET RAMP OVER I-444 - BRIDGE 'B'

LIGHTING BRACKET DETAILS

STATE JOB NO. 28865(04) SHEET NO. 67
TULSA CO. 2ND STREET

N:\11399\200-11399-13001-05\CAD\SheetFiles\JP 28865 (04) -67-BR.B-Lighting Bracket.Dtls.dgn 6/7/2016