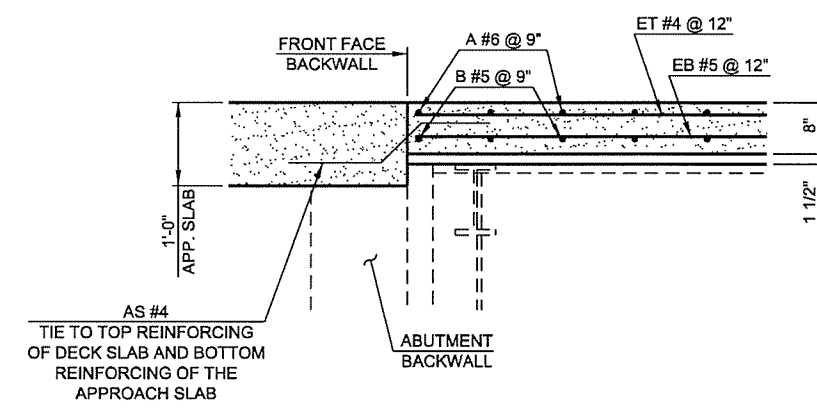
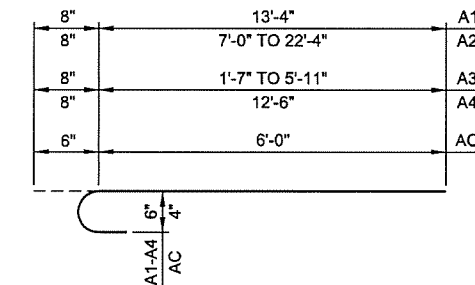


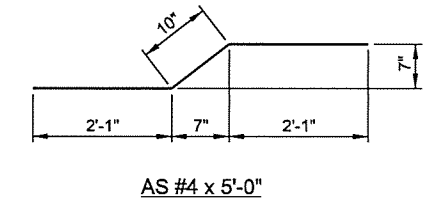
**SECTION A1 AND A2**  
(FROM SHEET 64)



**SECTION B**  
(FROM SHEET 64)



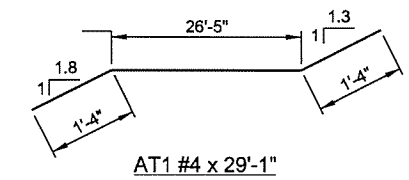
A1 #6 x 14'-0"  
A2 #6 x 15'-4" AVG.  
A3 #6 x 4'-5" AVG.  
A4 #6 x 13'-2"  
AC #4 x 6'-6"



AS #4 x 5'-0"

SUPERSTRUCTURE BAR LIST					
MARK	SIZE	NO.	FORM	LENGTH	LENGTH VARIES
EPOXY COATED REINFORCING BARS					
A1	#6	314	BNT	14'-0"	
A2	#6	17	BNT	15'-4" AVG.	7'-8" TO 23'-0"
A3	#6	10	BNT	4'-5" AVG.	2'-3" TO 6'-7"
A4	#6	140	BNT	13'-2"	
AC	#4	468	BNT	6'-6"	
B1	#5	157	STR	23'-3" AVG.	22'-5" TO 24'-1"
B2	#5	17	STR	14'-8" AVG.	7'-0" TO 22'-4"
B3	#5	10	STR	3'-9" AVG.	1'-7" TO 5'-11"
B4	#5	70	STR	22'-0" AVG.	21'-7" TO 22'-5"
① ET1	#4	2	STR	108'-3"	
② ⑥ ET2	#4	22	STR	123'-5" AVG.	111'-2" TO 135'-8"
② ET3	#4	2	STR	137'-2"	
ET4	#4	24	STR	49'-10" AVG.	48'-5" TO 51'-3"
③ EB1	#5	2	STR	109'-1"	
④ ⑥ EB2	#5	22	STR	125'-1" AVG.	112'-10" TO 137'-4"
④ EB3	#5	2	STR	138'-10"	
EB4	#5	24	STR	49'-10" AVG.	48'-5" TO 51'-3"
AS	#4	23	BNT	5'-0"	
AT1	#5	4	BNT	29'-1"	
AT2	#5	4	STR	22'-5"	
⑤ L	#4	20	BNT	1'-3"	
⑤ FS2	#5	327	BNT	7'-4"	

- ① INCLUDES 1 LAP LENGTH OF 1'-8" MIN.
- ② INCLUDES 2 LAP LENGTHS OF 1'-8" MIN.
- ③ INCLUDES 1 LAP LENGTH OF 2'-6" MIN.
- ④ INCLUDES 2 LAP LENGTHS OF 2'-6" MIN.
- ⑤ FOR BAR BEND SEE STD. FSHP-42-2
- ⑥ REINFORCING SHALL BE CONTINUOUS THRU CONSTRUCTION JOINT AT PIER NO. 4. DO NOT LAP WITHIN 10' OF PIER NO. 4



AT1 #4 x 29'-1"

N:\11399\200-11399-13001-05\CAD\SheetFiles\J 28865 (04) -65-BR.B-Deck.Reinf.2.dgn 6/7/2016

2ND STREET RAMP OVER I-444 - BRIDGE 'B'

DESIGN	JSH	2-16	<b>OKLAHOMA DEPARTMENT OF TRANSPORTATION</b>
DRAWN	MRM	2-16	
CHECKED	LWN	3-16	
APPROVED			
SQUAD	TT		

**DECK SLAB REINFORCING DETAILS**  
SHEET 2 OF 2

STATE JOB NO. 28865(04) SHEET NO. 65  
TULSA CO. 2ND STREET