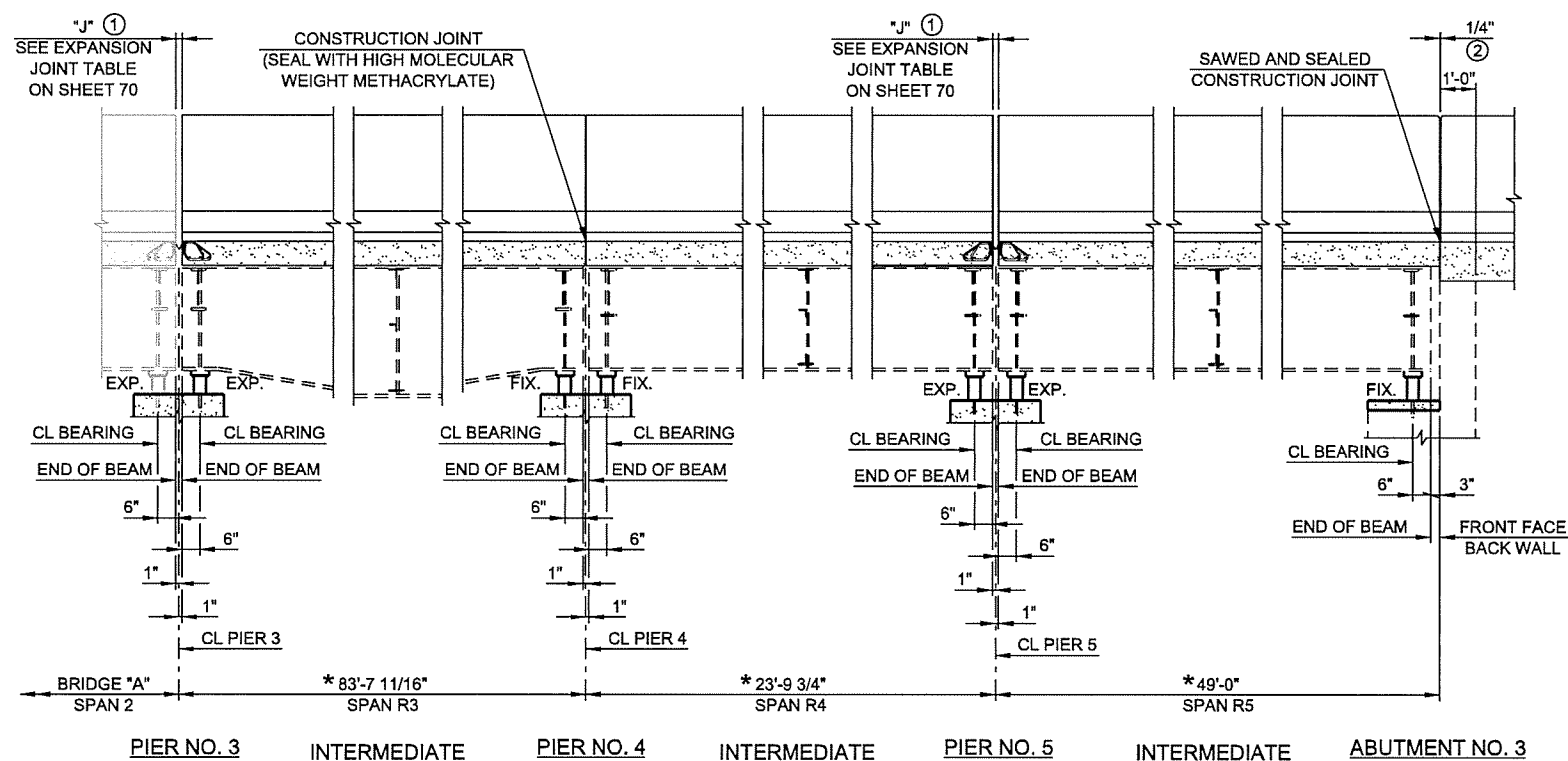


FRAMING PLAN
SCALE: 1" = 10'

- NOTES:**
- ALL INTERMEDIATE DIAPHRAGMS ARE TYPE (B).
 - RG-1 IS CONCENTRIC TO 2ND STREET W-N RAMP CRL. TYPE (B) DIAPHRAGMS BETWEEN RG-1 & RG-2 AND RG-2 & RG-3 ARE RADIAL TO 2ND STREET W-N RAMP CRL.
 - FOR DETAILS OF DIAPHRAGMS SEE SHEET 69.



- PARAPET OPENING SHALL BE THE SAME AS DECK SLAB OPENING AT EXPANSION JOINT.
- PLACE A 1/4" THICK PERFORMED EXPANSION MATERIAL IN EACH PARAPET VERTICAL CONSTRUCTION JOINT. SEE STD. TR4-2 AND FSHP-42-2 FOR ADDITIONAL DETAILS

LONGITUDINAL SECTION

DESIGN	JSH	1-1-6
DRAWN	MRM	1-1-6
CHECKED	LWN	3-1-6
APPROVED		
SQUAD	TT	

2ND STREET RAMP OVER I-444 - BRIDGE 'B'

OKLAHOMA DEPARTMENT OF TRANSPORTATION

FRAMING PLAN AND
LONGITUDINAL SECTION

STATE JOB NO. 28865(04) SHEET NO. 63
TULSA CO. 2ND STREET

6/7/2016 N:\11399\200-11399-13001-05\CAD\SheetFiles\JP 28865 (04) -63-BR.B-Framing.dgn