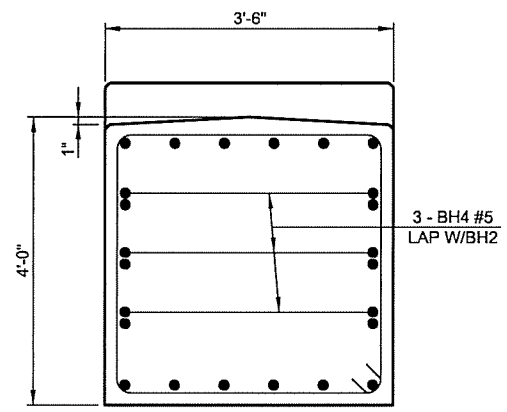
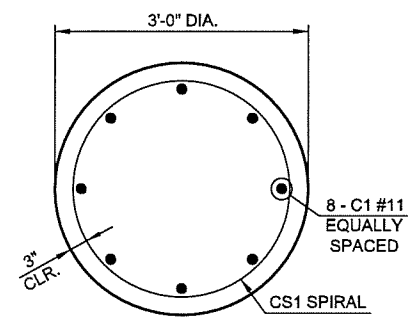


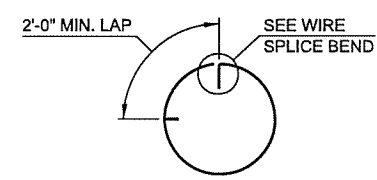
SECTION A-A



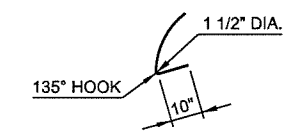
END SECTION



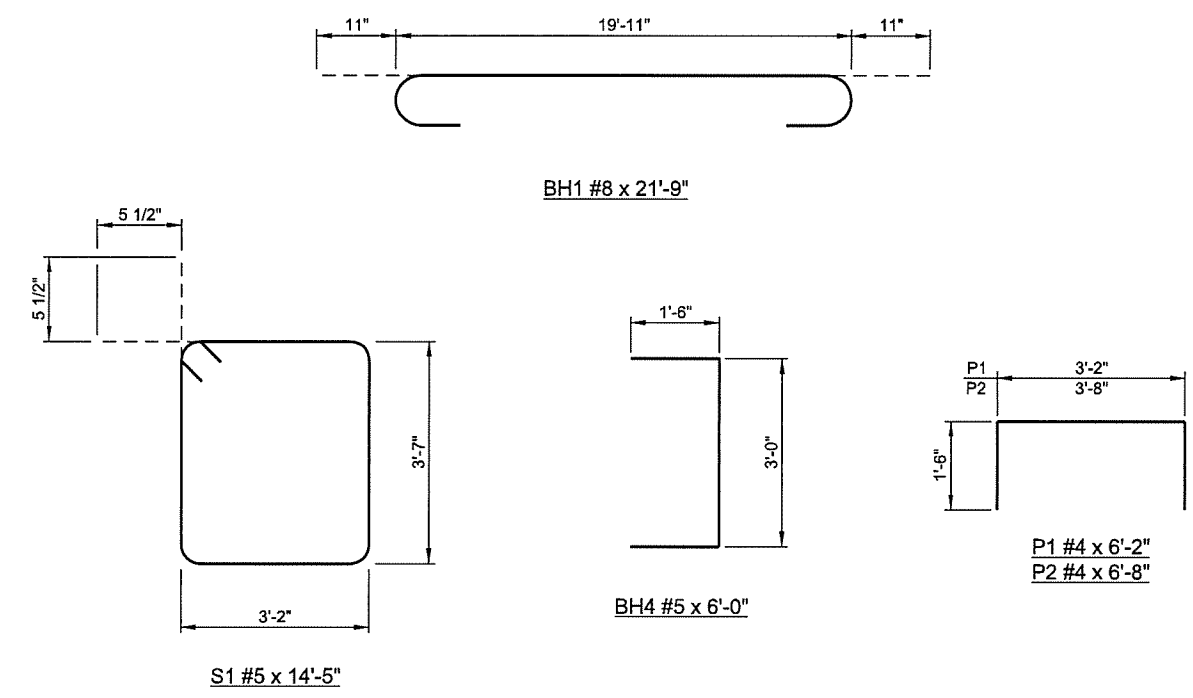
SECTION B-B



WIRE SPLICE WHEN REQ'D



WIRE SPLICE BEND



PIER NO. 5 COLUMN BAR LIST				
EPOXY COATED REINFORCING BARS				
MARK	SIZE	NO.	FORM	LENGTH
NORTH COLUMN				
C1	#11	8	STR.	14'-10"
CS1	W20	1	SPIRAL	198'-5"
SOUTH COLUMN				
C1	#11	8	STR.	15'-4"
CS1	W20	1	SPIRAL	207'-4"

PIER NO. 5 PIER CAP BAR LIST				
EPOXY COATED REINFORCING BARS				
MARK	SIZE	NO.	FORM	LENGTH
BH1	#8	6	BNT.	21'-9"
BH2	#5	6	STR.	19'-11"
BH3	#8	6	STR.	19'-11"
BH4	#5	6	BNT.	6'-0"
S1	#5	18	BNT.	14'-5"
P1	#4	15	BNT.	6'-2"
P2	#4	15	BNT.	6'-8"

PIER NO. 5 SUMMARY OF QUANTITIES		
DESCRIPTION	UNIT	TOTAL
CLASS A CONCRETE	CY	17.1
EPOXY COATED REINFORCING STEEL	LB	2790.0
WATER REPELLENT (VISUALLY INSPECTED)	SY	53.0

6/7/2016 N:\11399\200-11399-13001-05\CAD\SheetFiles\JP 28865 (04) -61-BR.B.-Pier 5.2.dgn

2ND STREET RAMP OVER I-444 - BRIDGE 'B'

DESIGN	LWN	3-1-6	OKLAHOMA DEPARTMENT OF TRANSPORTATION PIER NO. 5 DETAILS SHEET 2 OF 2 STATE JOB NO. 28865(04) SHEET NO. 61 TULSA CO. 2ND STREET
DRAWN	MRM	3-1-6	
CHECKED	JSH	3-1-6	
APPROVED			
SQUAD	TT		