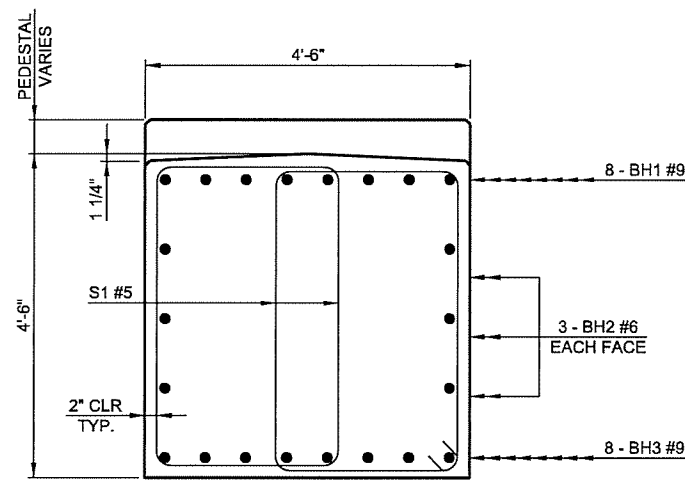
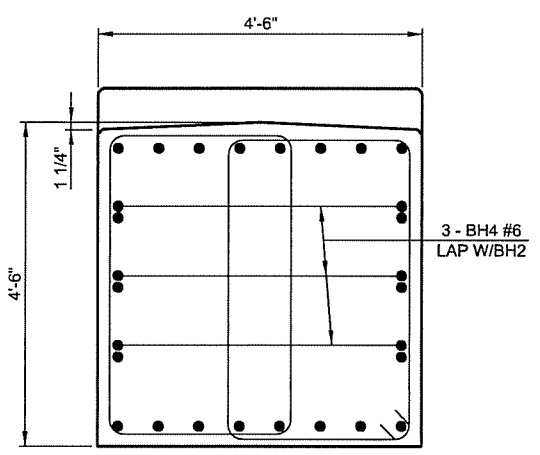


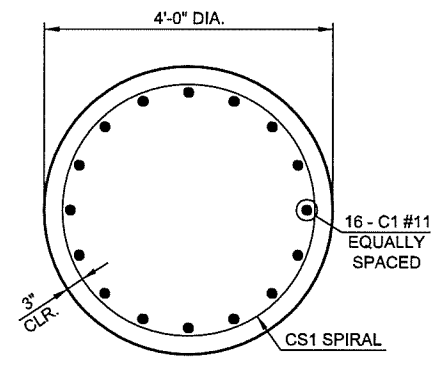
| DESCRIPTION | REVISIONS | DATE |
|-------------|-----------|------|
| | | |



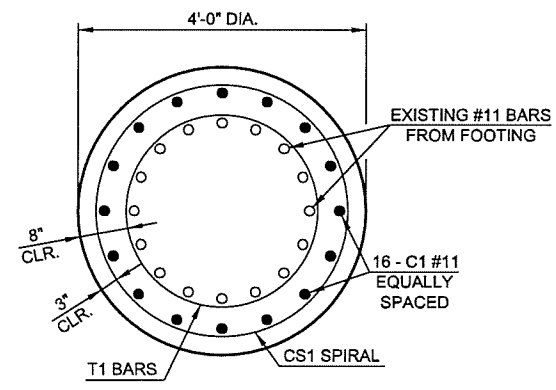
SECTION A-A



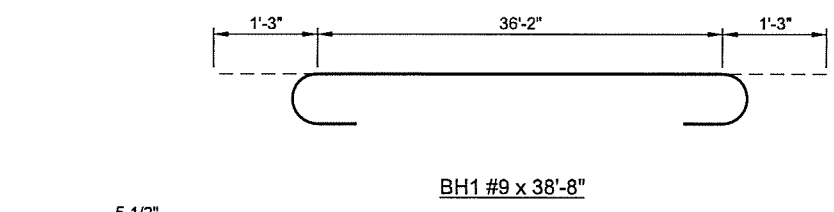
END SECTION



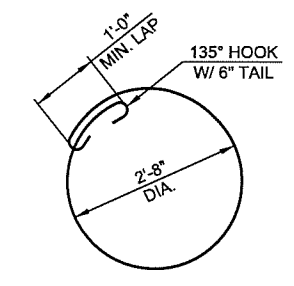
SECTION B-B



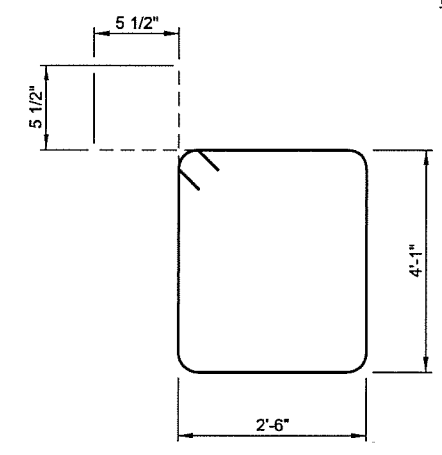
SECTION C-C



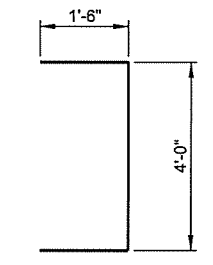
BH1 #9 x 38'-8"



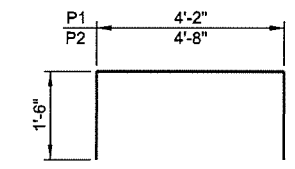
T1 #4 x 10'-5"



S1 #5 x 15'-1"



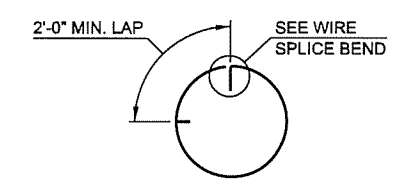
BH4 #6 x 7'-0"



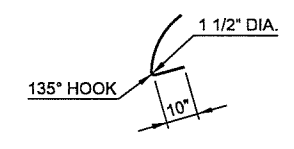
P1 #4 x 7'-2"
P2 #4 x 7'-8"

| PIER NO. 4 COLUMN BAR LIST | | | | |
|----------------------------|------|-----|--------|----------|
| EPOXY COATED REINFORCING | | | | |
| MARK | SIZE | NO. | FORM | LENGTH |
| NORTH COLUMN | | | | |
| C1 | #11 | 16 | STR. | 16'-4" |
| CS1 | W20 | 1 | SPIRAL | 298'-10" |
| T1 | #4 | 5 | BNT. | 10'-5" |
| SOUTH COLUMN | | | | |
| C1 | #11 | 16 | STR. | 17'-7" |
| CS1 | W20 | 1 | SPIRAL | 327'-6" |
| T1 | #4 | 5 | BNT. | 10'-5" |

| PIER NO. 4 PIER CAP BAR LIST | | | | |
|-------------------------------|------|-----|------|--------|
| EPOXY COATED REINFORCING BARS | | | | |
| MARK | SIZE | NO. | FORM | LENGTH |
| BH1 | #9 | 8 | BNT. | 38'-8" |
| BH2 | #6 | 6 | STR. | 36'-2" |
| BH3 | #9 | 8 | STR. | 36'-2" |
| BH4 | #6 | 6 | BNT. | 7'-0" |
| S1 | #5 | 66 | BNT. | 14'-1" |
| P1 | #4 | 18 | BNT. | 7'-2" |
| P2 | #4 | 18 | BNT. | 7'-8" |



WIRE SPLICE
WHEN REQ'D



WIRE SPLICE BEND

| PIER NO. 4 SUMMARY OF QUANTITIES | | |
|--------------------------------------|------|--------|
| DESCRIPTION | UNIT | TOTAL |
| CLASS A CONCRETE | CY | 40.4 |
| EPOXY COATED REINFORCING STEEL | LB | 6960.0 |
| WATER REPELLENT (VISUALLY INSPECTED) | SY | 98.0 |

N:\11399\200-11399-13001-05\CAD\SheetFiles\JP 28865 (04) -59-BR.B-Pier 4.2.dgn 6/7/2016

2ND STREET RAMP OVER I-444 - BRIDGE 'B'

| | | | |
|----------|-----|------|--|
| DESIGN | LWN | 2-16 | OKLAHOMA DEPARTMENT OF TRANSPORTATION |
| DRAWN | MRM | 2-16 | |
| CHECKED | JSH | 3-16 | |
| APPROVED | | | |
| SQUAD | TT | | |

PIER NO. 4 DETAILS
SHEET 2 OF 2

STATE JOB NO. 28865(04) SHEET NO. 59
TULSA CO. 2ND STREET