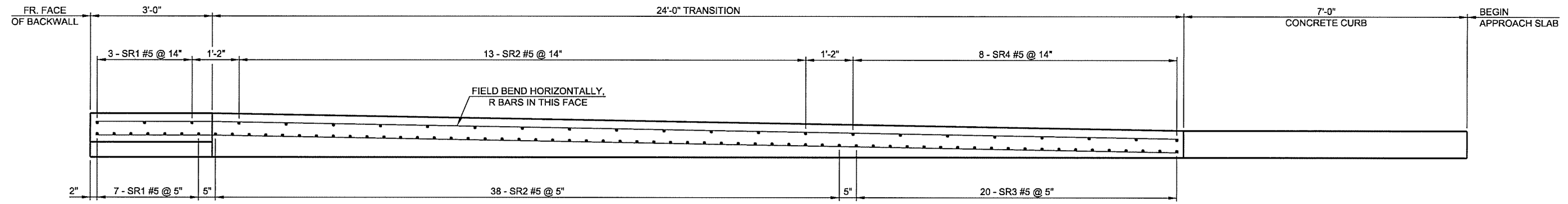
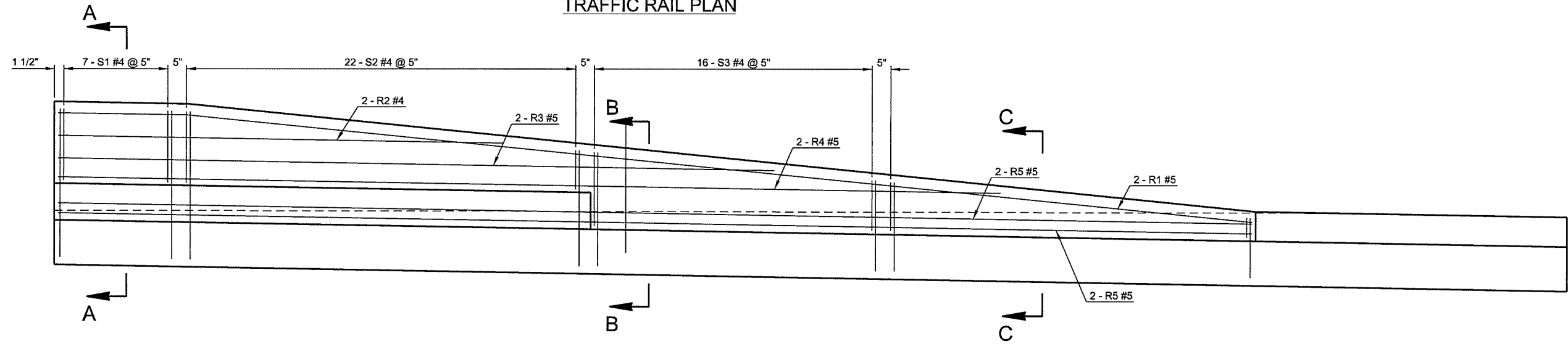


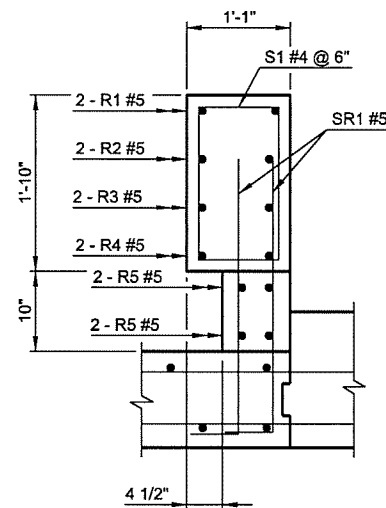
DESCRIPTION	REVISIONS	DATE



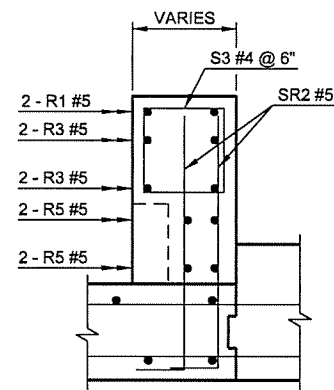
TRAFFIC RAIL PLAN



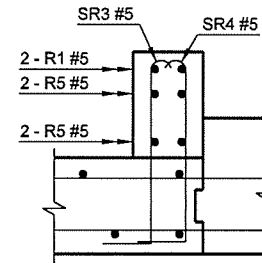
TRAFFIC RAIL ELEVATION



SECTION A-A



SECTION B-B



SECTION C-C

APPROACH SLAB NO. 1 QUANTITIES		
DESCRIPTION	UNIT	TOTAL
① APPROACH SLAB	SY	215.0
42" F-SHAPED PARAPET	LF	20.0
CONCRETE RAIL (TR4)	LF	27.0
SAW CUT GROOVING	SY	190
WATER REPELLENT (VISUALLY INSPECTED)	SY	228.0
PNEUMATICALLY PLACED MORTAR	SY	2.0
(PL)CORROSION INHIBITOR (SURFACE APPLIED)	SY	4.5
CONCRETE CURB (8" BARRIER-INTEGRAL)	LF	39.0
CLSM BACKFILL	CY	69.5

① THE CONTRACT UNIT PRICE FOR APPROACH SLAB SHALL BE FULL COMPENSATION FOR CONCRETE, REINFORCING STEEL (INCLUDING SR1, SR2, SR3, FS2 AND FS6), BACKER ROD, RAPID CURE JOINT SEALANT, POLYSTYRENE, LABOR, EQUIPMENT, AND OTHER INCIDENTALS NECESSARY TO COMPLETE THE WORK AS SPECIFIED ON THE PLANS. THERE IS AN ESTIMATED 71.7 C.Y. OF CLASS AA CONCRETE AND AN ESTIMATED 13,679 LB. OF EPOXY COATED REINFORCING STEEL IN APPROACH SLAB NO. 1.

2ND STREET OVER I-444 - BRIDGE 'A'

DESIGN	JWB	3-16
DRAWN	MRM	3-16
CHECKED	JSH	3-16
APPROVED		
SQUAD	TT	

OKLAHOMA DEPARTMENT OF TRANSPORTATION

APPROACH SLAB NO. 1
SHEET 3 OF 3

STATE JOB NO. 28865(04) SHEET NO. 49

TULSA CO. 2ND STREET