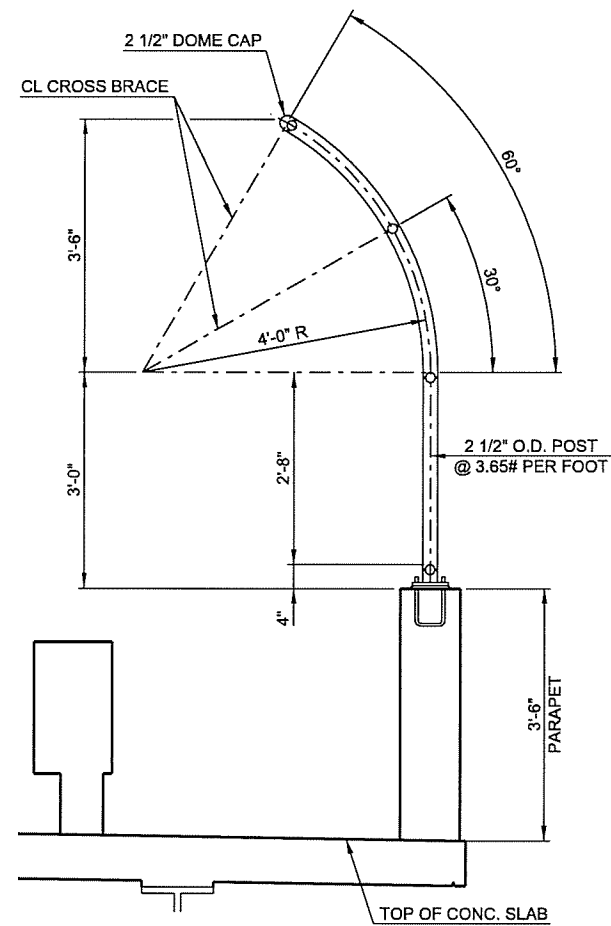
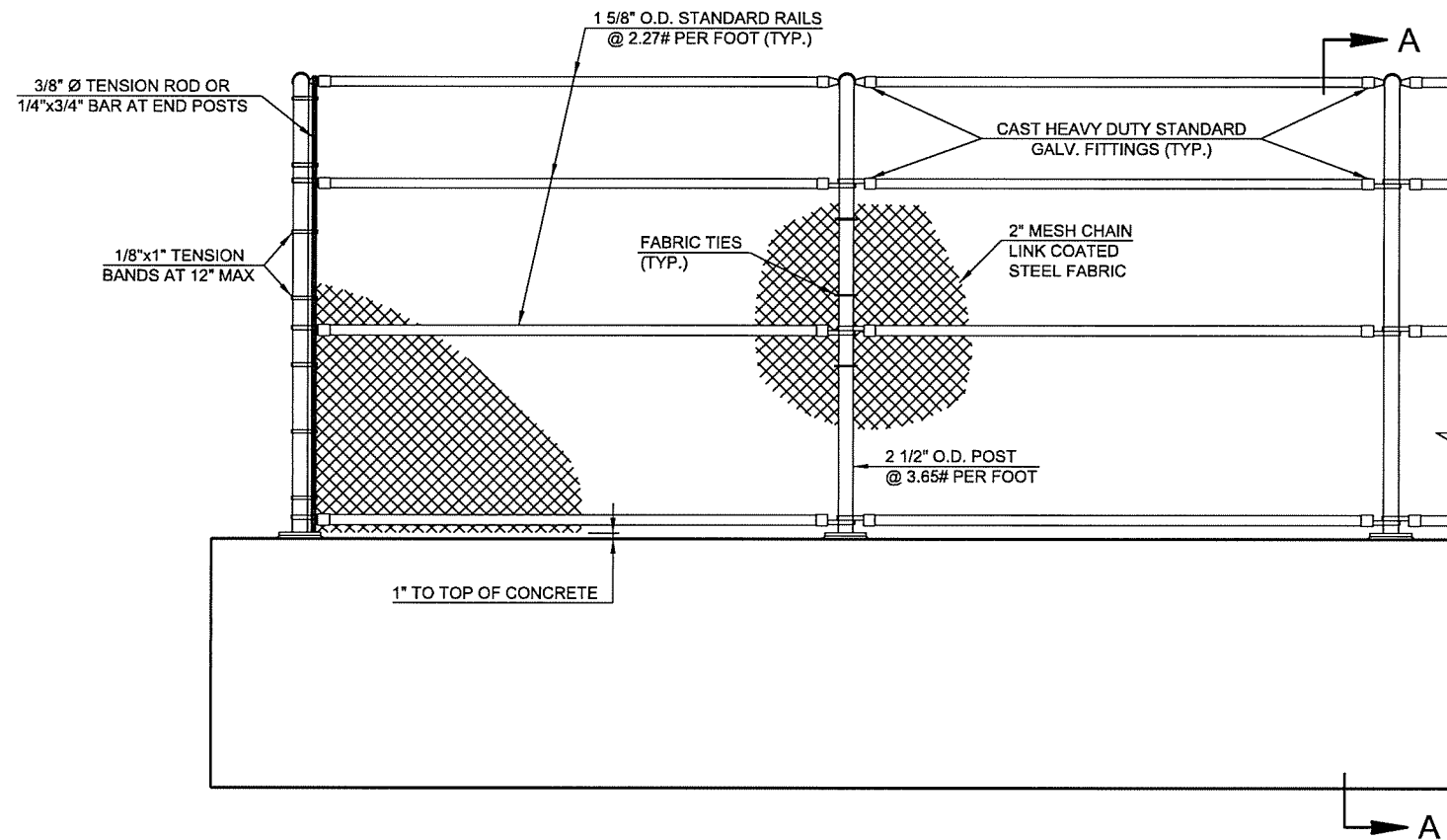


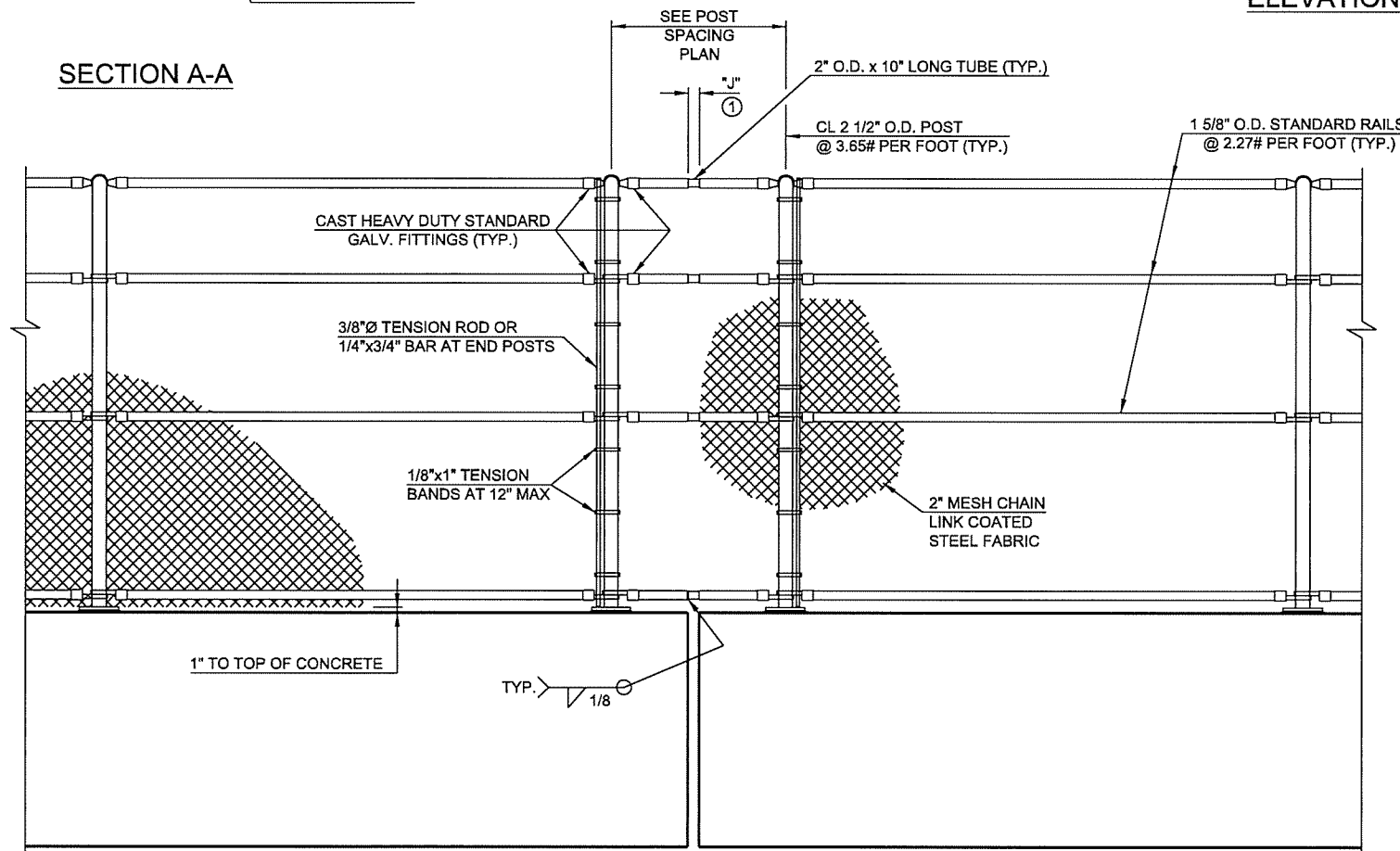
DESCRIPTION	REVISIONS	DATE



SECTION A-A



ELEVATION OF FENCE



ELEVATION OF FENCE AT EXPANSION JOINT

① SEE SHEET 40 FOR OPENING "J".

CHAIN LINK FENCE NOTES:

THE PEDESTRIAN FENCE (CHAIN LINK TYPE) SHALL BE IN ACCORDANCE WITH SECTION 624 OF THE OKLAHOMA STANDARD SPECIFICATION, EXCEPT AS AMENDED IN THE PLANS AND SPECIFICATIONS.

FABRIC SHALL BE FASTENED TO LINE POST WITH PROPER TIES SPACED APPROXIMATELY 12" APART. FABRIC SHALL BE FASTENED TO RAILS WITH PROPER TIES SPACED AT APPROXIMATELY 15" APART.

THE PEDESTRIAN FENCE SHALL BE BID PER LINEAR FOOT AS BID ITEM, "FENCE, STYLE CLF (6" HIGH, CLASS "A"). THIS ITEM SHALL INCLUDE FURNISHING AND PLACING THE FENCE, WHICH INCLUDES THE WIRE FABRIC, ALL THE PIPE, FRAMEWORK, ALL THE FASTENERS, PLATES, STRAPS, U-BOLTS, AND CONNECTORS NECESSARY FOR THIS INSTALLATION, COMPLETE AND IN PLACE. ALL PARTS SHALL BE GALVANIZED AFTER FABRICATION AND ALL WELDS SHALL BE FREE OF SLAG HOLES PRIOR TO GALVANIZATION.

ALL FENCE POSTS SHALL BE VERTICAL. GROUT OF 1/2" MINIMUM THICKNESS SHALL BE PLACED UNDER FLOOR PLATES TO PROVIDE FOR VERTICAL ALIGNMENT OF POSTS.

DIMENSIONS OF THE PEDESTRIAN FENCE ARE MEASURED HORIZONTALLY.

MISCELLANEOUS PLATES, BARS, SHAPES INCLUDING TENSION ROD SHALL CONFORM TO ASTM A36.

THE CHAIN LINK FABRIC FOR THE PEDESTRIAN FENCE SHALL HAVE THE TOP AND BOTTOM EDGES KNUCKLED.

THE CHAIN LINK FABRIC FOR THE PEDESTRIAN FENCE SHALL BE LAPPED AT THE POSTS. THE CHAIN LINK FABRIC SHALL BE PLACED ON THE OUTSIDE OF THE POST. NO SPLICES WITH BARS WILL BE PERMITTED.

APPROVAL OF SHOP DETAILS AND MATERIALS IS REQUIRED BEFORE INSTALLATION BEGINS.

ALL RAILS SHALL HAVE A 1/2" DIAMETER DRAIN HOLE IN THE BOTTOM OF EACH PIPE LOCATED NEAR THE LOW END OF EACH PANEL.

CORE WIRE SIZE FOR WIRE FABRIC SHALL BE 6 GAGE MINIMUM.

2ND STREET OVER I-444 - BRIDGE "A"

DESIGN	JSH	3-16
DRAWN	MRM	3-16
CHECKED	LWN	3-16
APPROVED		
SQUAD	TT	

OKLAHOMA DEPARTMENT OF TRANSPORTATION

FENCE DETAILS
SHEET 2 OF 2

STATE JOB NO. 28865(04) SHEET NO. 44

TULSA CO. 2ND STREET