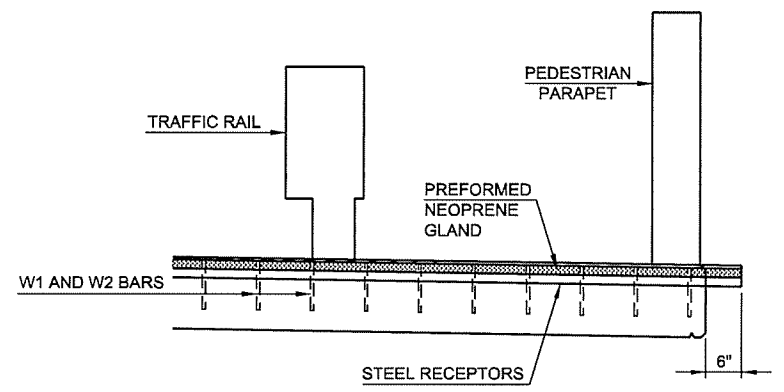


SECTION AT F-SHAPED PARAPET (ABUTMENT NO. 1)

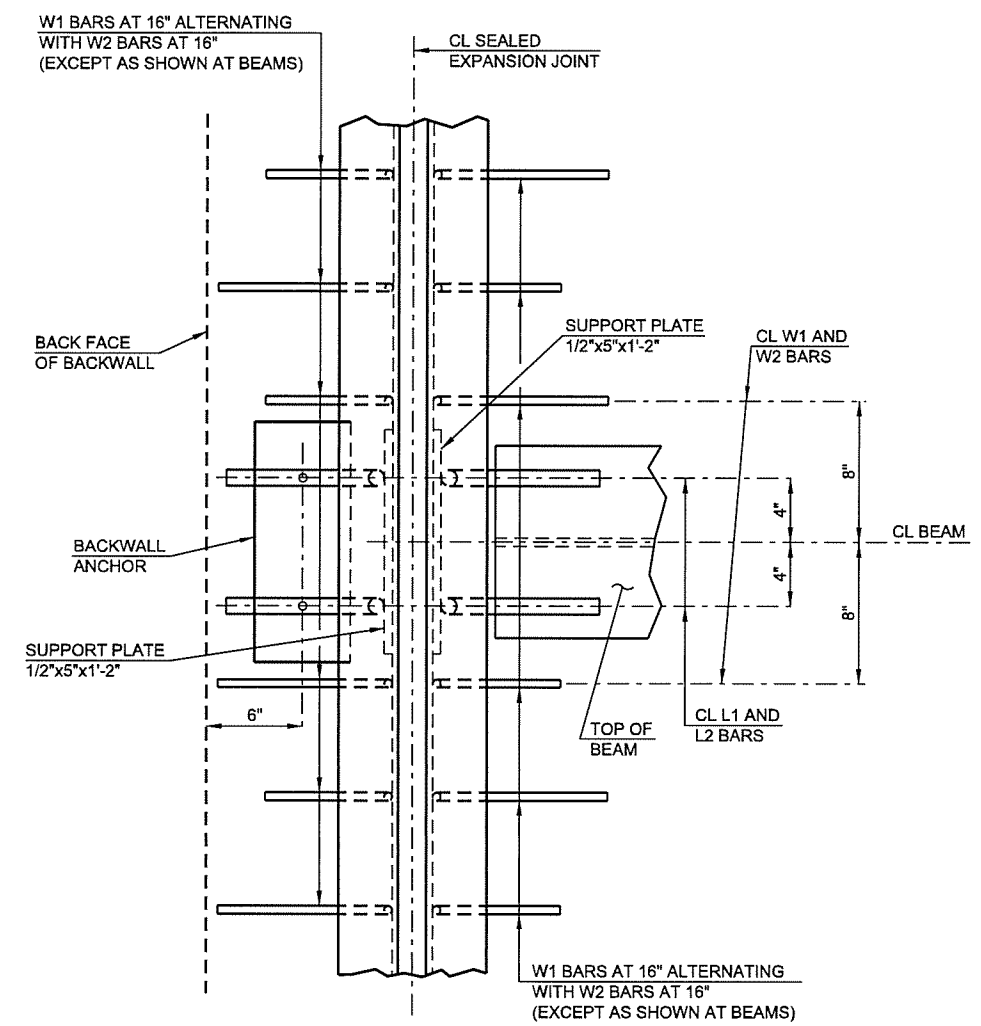
ELEVATION OF EXPANSION JOINT (ABUTMENT NO. 1)

EXPANSION TABLE

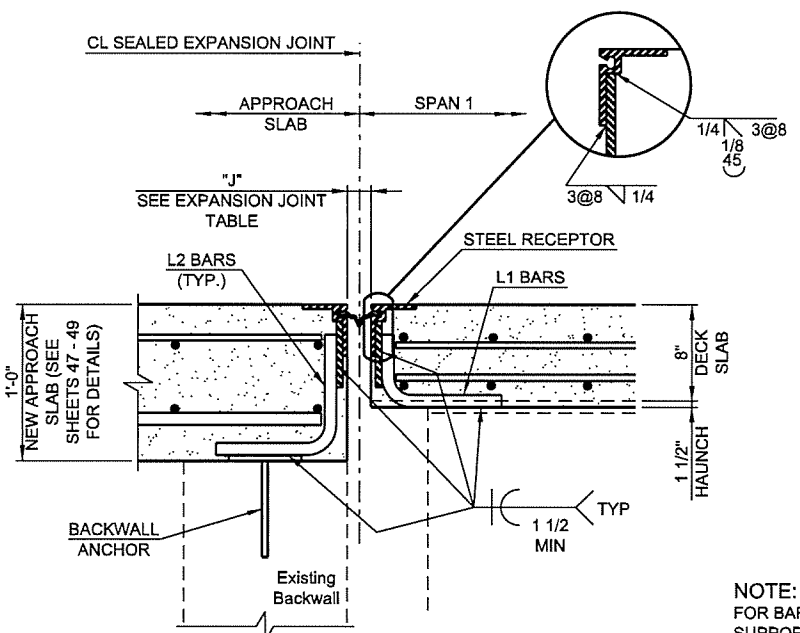
TEMPERATURE		JOINT OPENING "J"
ABUT. 1	PIER 2	
-	-7°F	2 7/8"
-	3°F	2 3/4"
-	12°F	2 5/8"
-	22°F	2 1/2"
-30°F	31°F	2 3/8"
0°F	41°F	2 1/4"
30°F	50°F	2 1/8"
60°F	60°F	2"
90°F	70°F	1 7/8"
120°F	79°F	1 3/4"
-	89°F	1 5/8"
-	98°F	1 1/2"
-	108°F	1 3/8"



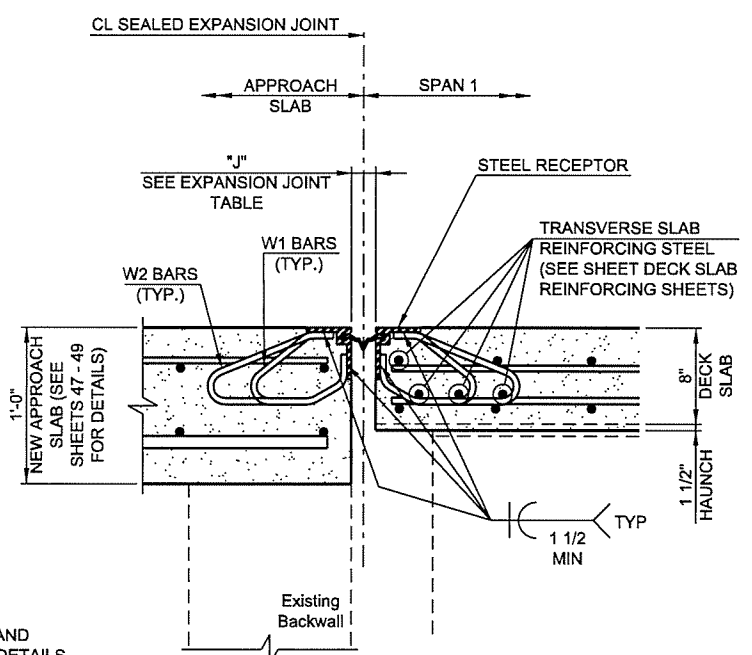
SECTION AT TRAFFIC RAIL (ABUTMENT NO. 1 AND PIER NO. 2)



PLAN OF SEALED EXPANSION JOINT AT ABUTMENT NO. 1



SECTION OF EXPANSION JOINT AT ABUTMENT NO. 1 AT BEAMS



SECTION OF EXPANSION JOINT AT ABUTMENT NO. 1 BETWEEN BEAMS

NOTE:
FOR BAR BENDS AND SUPPORT PLATE DETAILS SEE SHEET 42

NOTE:
DRILL INTO EXISTING BACKWALL AND SECURE ANCHOR PLATE WITH ODOT APPROVED EPOXY (SEE ANCHORAGE SYSTEM NOTE, SHEET 42)

2ND STREET OVER I-444 - BRIDGE "A"

DESIGN	JSH	3-16
DRAWN	MRM	3-16
CHECKED	LWN	3-16
APPROVED		
SQUAD	TT	

OKLAHOMA DEPARTMENT OF TRANSPORTATION

SEALED EXPANSION JOINT DETAILS

SHEET 1 OF 3

STATE JOB NO. 28865(04) SHEET NO. 40

TULSA CO. 2ND STREET

N:\11399200-11399-13001-05\CAD\SheetFiles\JP 28865 (04) -40-BR-A-Exp.J1.dgn 6/7/2016