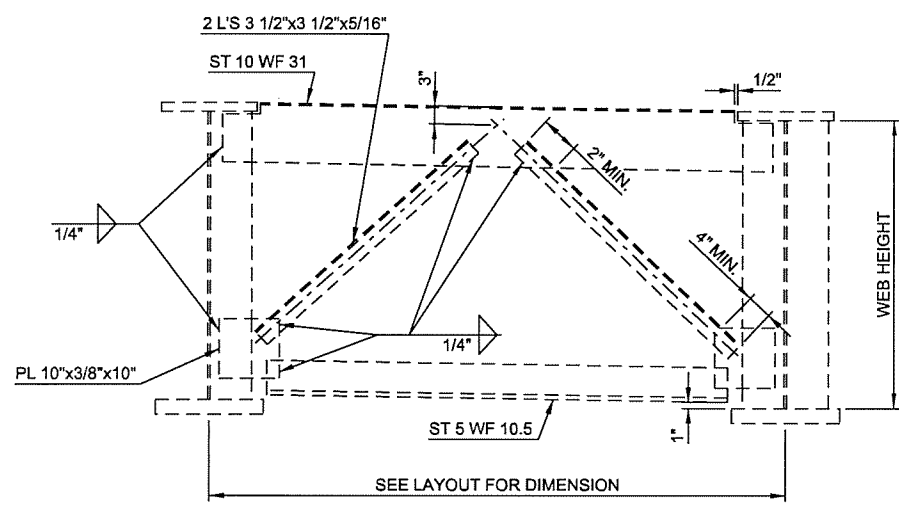
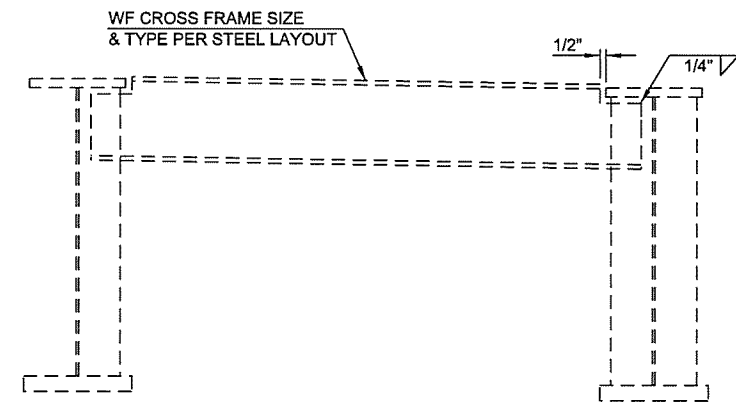


TYPE (A) DIAPHRAGM
(FOR INFORMATION ONLY)



TYPE (B) DIAPHRAGM
(FOR INFORMATION ONLY)



TYPE (C) DIAPHRAGM
(FOR INFORMATION ONLY)

BEAM SCHEDULE															
SPAN	BEAM	BRG. TO BRG. LENGTH	BEAM AND DIAPHRAGM DEFLECTION						DECK SLAB, HAUNCH AND TRAFFIC RAIL DEFLECTIONS						LFD OPERATING RATING
			CL BRG.	0.1 & 0.9	0.2 & 0.8	0.3 & 0.7	0.4 & 0.6	0.5	CL BRG.	0.1 & 0.9	0.2 & 0.8	0.3 & 0.7	0.4 & 0.6	0.5	
1	RG-1	52'-10 1/8"	0.00"	0.04"	0.07"	0.09"	0.11"	0.12"	0.00"	0.22"	0.39"	0.52"	0.60"	0.65"	HS 71.8
	RG-2	52'-8"	0.00"	0.04"	0.07"	0.09"	0.11"	0.11"	0.00"	0.22"	0.39"	0.51"	0.59"	0.63"	HS 67.7
	G-1	53'-6"	0.00"	0.04"	0.07"	0.09"	0.10"	0.11"	0.00"	0.22"	0.39"	0.52"	0.60"	0.63"	HS 52.4
	G-2	52'-3 3/4"	0.00"	0.04"	0.07"	0.09"	0.10"	0.11"	0.00"	0.22"	0.40"	0.53"	0.62"	0.65"	HS 55.8
	G-3	52'-1 1/4"	0.00"	0.04"	0.07"	0.09"	0.10"	0.11"	0.00"	0.23"	0.41"	0.54"	0.62"	0.66"	HS 59.6
	G-4	51'-10 7/8"	0.00"	0.04"	0.06"	0.09"	0.10"	0.10"	0.00"	0.22"	0.40"	0.53"	0.61"	0.65"	HS 49.5
2	G-5	51'-8 1/2"	0.00"	0.04"	0.06"	0.08"	0.10"	0.10"	0.00"	0.22"	0.39"	0.51"	0.59"	0.63"	HS 65.7
	G-6	51'-6 1/4"	0.00"	0.03"	0.06"	0.08"	0.09"	0.10"	0.00"	0.20"	0.36"	0.48"	0.55"	0.59"	HS 131.4
	RG-1	83'-8 1/8"	0.00"	0.10"	0.19"	0.25"	0.29"	0.30"	0.00"	0.31"	0.59"	0.79"	0.91"	0.96"	HS 89.1
	RG-2	81'-4 5/8"	0.00"	0.11"	0.20"	0.27"	0.32"	0.33"	0.00"	0.34"	0.63"	0.85"	0.98"	1.02"	HS 73.6
	RG-3	78'-0 3/4"	0.00"	0.11"	0.21"	0.28"	0.33"	0.34"	0.00"	0.35"	0.65"	0.88"	1.02"	1.07"	HS 61.0
	G-1	74'-1 1/2"	0.00"	0.11"	0.20"	0.27"	0.32"	0.33"	0.00"	0.35"	0.66"	0.90"	1.05"	1.12"	HS 53.5
3	G-2	72'-9 5/8"	0.00"	0.11"	0.19"	0.25"	0.29"	0.31"	0.00"	0.41"	0.74"	0.98"	1.13"	1.20"	HS 60.5
	G-3	71'-5 3/4"	0.00"	0.09"	0.17"	0.22"	0.26"	0.27"	0.00"	0.43"	0.77"	1.01"	1.17"	1.23"	HS 62.5
	G-4	70'-1 7/8"	0.00"	0.09"	0.15"	0.20"	0.23"	0.25"	0.00"	0.42"	0.75"	0.99"	1.14"	1.20"	HS 57.6
	G-5	68'-10 1/8"	0.00"	0.08"	0.14"	0.18"	0.21"	0.22"	0.00"	0.39"	0.70"	0.92"	1.07"	1.13"	HS 68.8
	G-6	67'-6 1/8"	0.00"	0.07"	0.12"	0.16"	0.19"	0.20"	0.00"	0.36"	0.63"	0.84"	0.97"	1.02"	HS 102.6
	G-1	100'-8"	0.00"	0.15"	0.27"	0.36"	0.42"	0.44"	0.00"	0.40"	0.75"	1.01"	1.16"	1.21"	HS 79.6
3	G-2	97'-10 1/4"	0.00"	0.15"	0.28"	0.37"	0.43"	0.45"	0.00"	0.42"	0.79"	1.05"	1.21"	1.26"	HS 68.0
	G-3	95'-1 7/8"	0.00"	0.15"	0.28"	0.37"	0.43"	0.45"	0.00"	0.42"	0.79"	1.06"	1.23"	1.28"	HS 60.3
	G-4	92'-7 5/16"	0.00"	0.15"	0.27"	0.37"	0.43"	0.45"	0.00"	0.42"	0.78"	1.06"	1.23"	1.28"	HS 58.9
	G-5	90'-1 7/8"	0.00"	0.15"	0.27"	0.36"	0.42"	0.44"	0.00"	0.43"	0.78"	1.06"	1.23"	1.29"	HS 61.4
G-6	87'-9 3/4"	0.00"	0.15"	0.27"	0.37"	0.43"	0.46"	0.00"	0.43"	0.79"	1.08"	1.26"	1.34"	HS 61.0	

N:\11399\200-11399-13001-05\CAD\SheetFiles\J 28865 (04) -39-BR-A-Steel_Details.3.dgn 6/7/2016

2ND STREET OVER I-444 - BRIDGE 'A'

DESIGN	JSH	2-15	OKLAHOMA DEPARTMENT OF TRANSPORTATION
DRAWN	MRM	2-15	
CHECKED	LWN	3-16	
APPROVED			
SQUAD	TT		

STEEL DETAILS
SHEET 3 OF 3

STATE JOB NO. 28865(04) SHEET NO. 39
TULSA CO. 2ND STREET