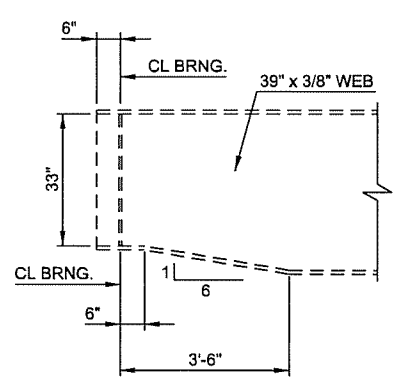
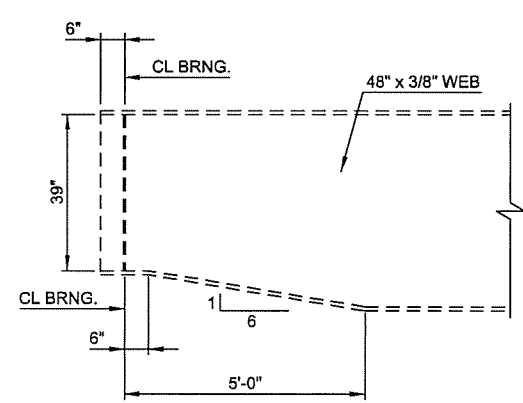


**NEW BEARING STIFFENER DETAIL**  
(G-1 THRU G-5 ONLY)

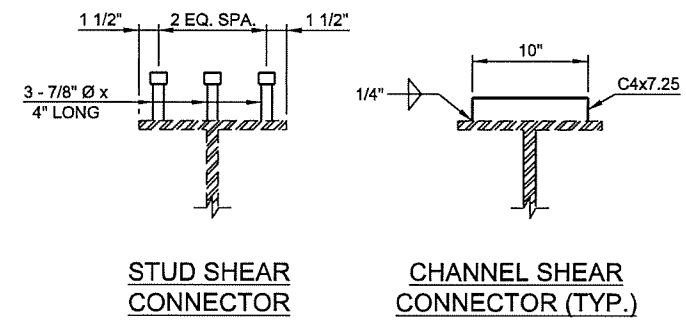
**SPAN NO. 3**  
GIRDERS G-1 THRU G-6  
(BEARING STIFFENERS SHALL BE 8 3/4" x 3/4")



**DETAIL "A"**



**DETAIL "B"**



**SHEAR CONNECTOR DETAILS**

**NOTE:**  
CONTRACTOR SHALL TAKE EXTRA CARE IN REMOVING BRIDGE DECK IN ORDER TO NOT DAMAGE EXISTING CHANNEL SHEAR CONNECTORS. DAMAGED OR MISSING CONNECTORS SHALL BE REPLACED AT NO ADDITIONAL COST TO THE PROJECT. REPLACEMENT CONNECTORS CAN BE CHANNELS OR STUDS AS SHOWN. DETAILS SHOWN FOR INFORMATION ONLY UNLESS NOTED OTHERWISE. SEE NEW BEARING STIFFENER DETAILS THIS SHEET.

N:\11399\200-11399-13001-05\CAD\SheetFiles\JP 28865 (04) -38-BF-A-Steel\_Details.2.dgn 6/7/2016

DESIGN			JSH	2-15
DRAWN			MRM	2-15
CHECKED			LWN	3-16
APPROVED				
SQUAD			TT	

2ND STREET OVER I-444 - BRIDGE 'A'

**OKLAHOMA DEPARTMENT OF TRANSPORTATION**

**STEEL DETAILS**  
SHEET 2 OF 3

STATE JOB NO. 28865(04) SHEET NO. 38  
TULSA CO. 2ND STREET