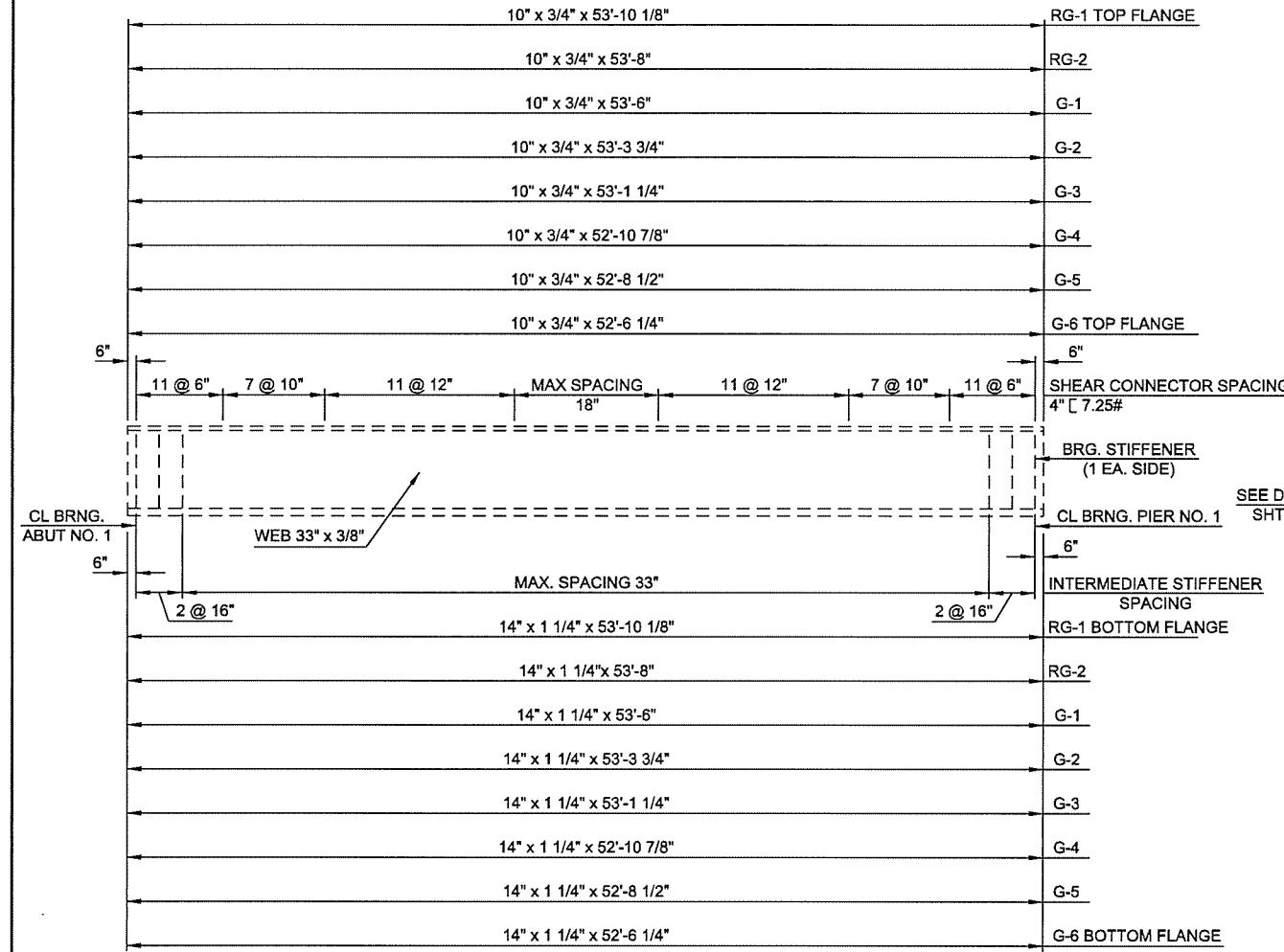
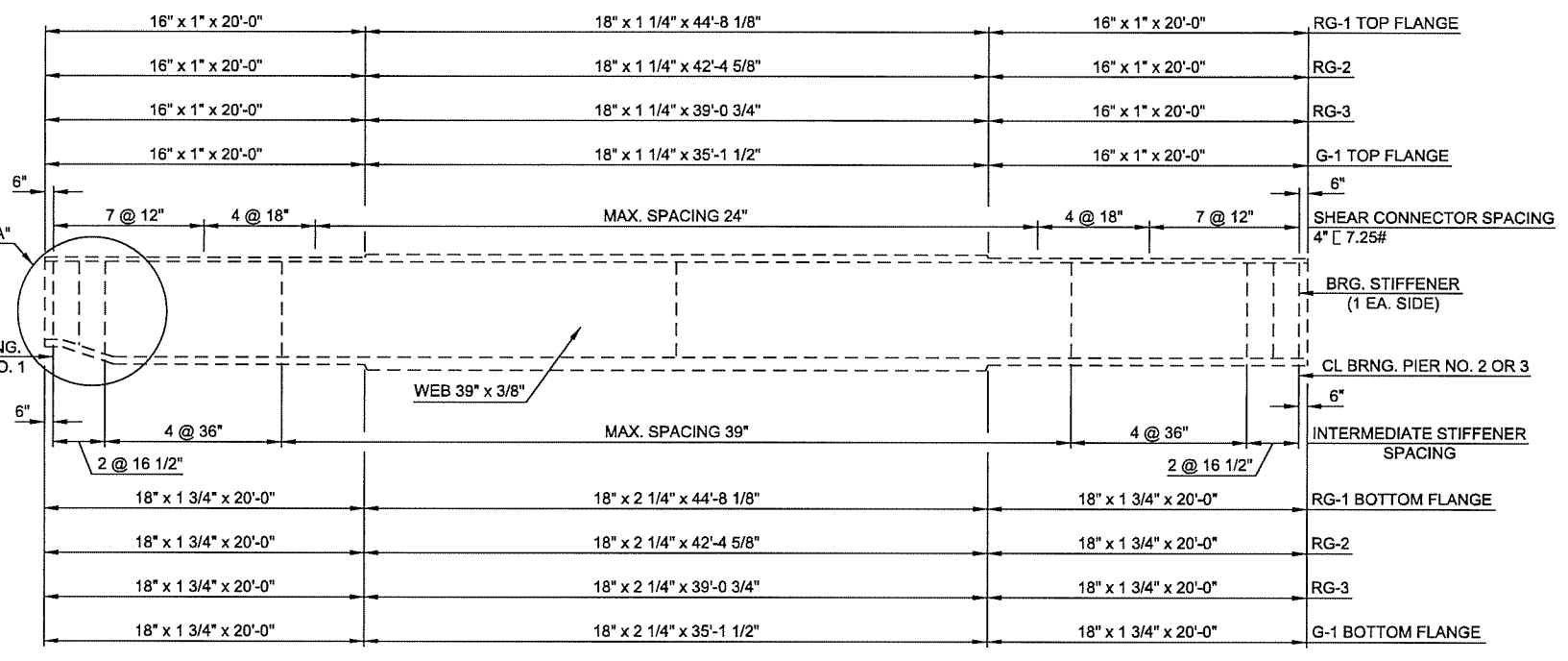


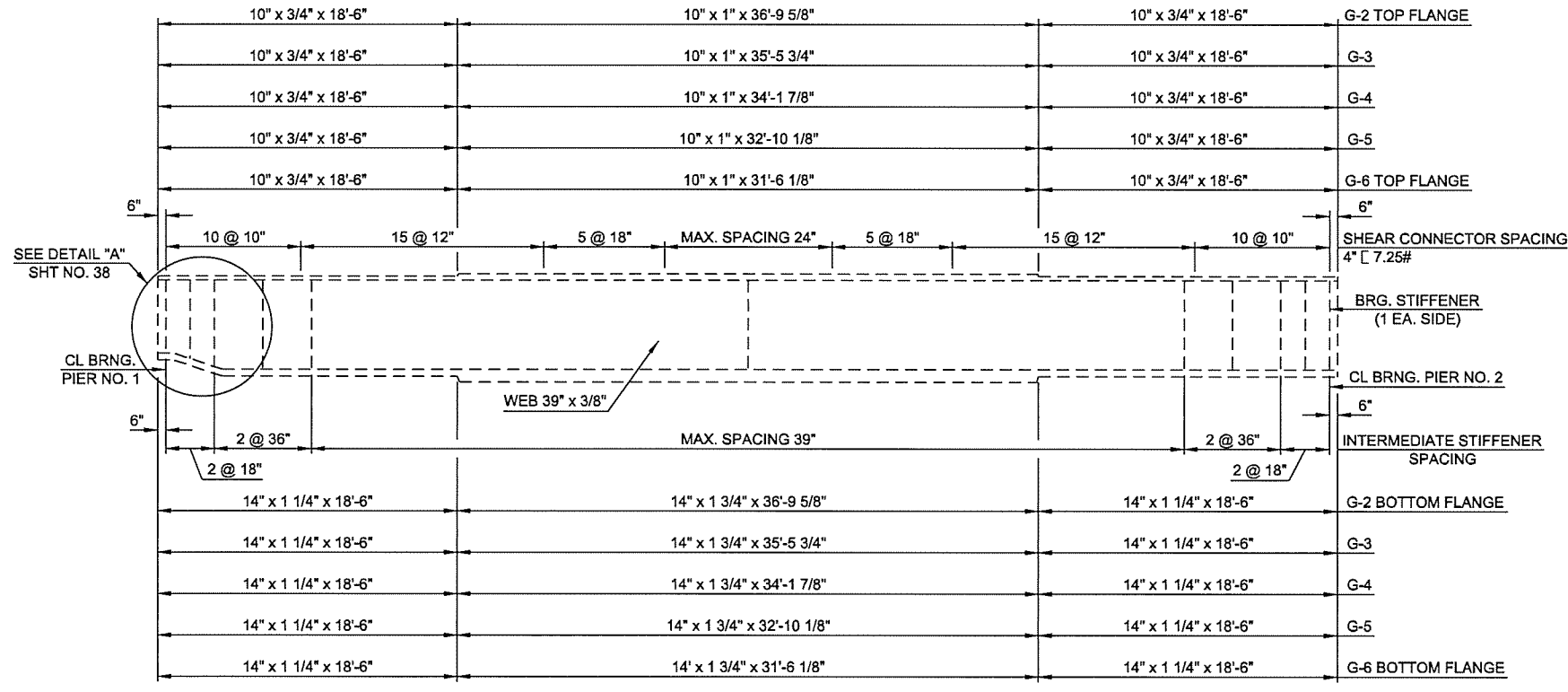
DESCRIPTION	REVISIONS	DATE
-------------	-----------	------



SPAN NO. 1
GIRDERS RG-1, RG-2 & G-1 THRU G-6
(BEARING STIFFENERS ARE 4 3/4" x 1/2")



SPAN NO. 2
GIRDER RG-1 THRU RG-3 & G-1
(BEARING STIFFENERS ARE 8 3/4" x 3/4")



SPAN NO. 2
GIRDERS G-2 TO G-6
(BEARING STIFFENERS ARE 6 3/4" x 5/8")

NOTE:
DETAILS SHOWN ARE FOR INFORMATION
ONLY. SEE GENERAL NOTES REGARDING
DAMAGE TO EXISTING STEEL.

2ND STREET OVER I-444 - BRIDGE 'A'

DESIGN	JSH	2-15	OKLAHOMA DEPARTMENT OF TRANSPORTATION
DRAWN	MRM	2-15	
CHECKED	LWN	3-16	
APPROVED			
SQUAD	TT		

STEEL DETAILS
SHEET 1 OF 3
STATE JOB NO. 28865(04) SHEET NO. 37
TULSA CO. 2ND STREET

6/7/2016 N:\11399\200-11399-13001-05\CAD\SheetFiles\JP 28865 (04) -37-BR-A-Steel_Details_1.dgn