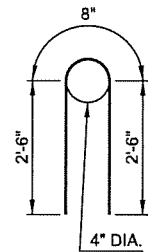
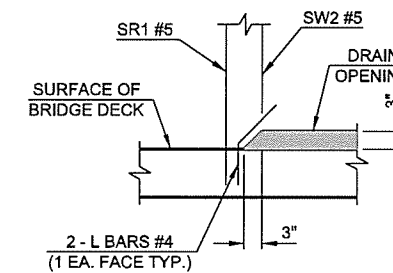


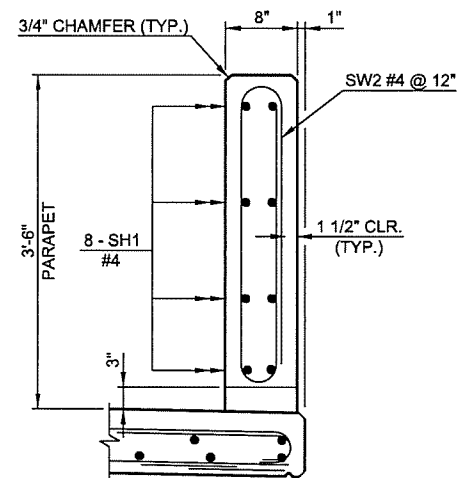
TYPICAL SECTION THRU PEDESTRIAN PARAPET



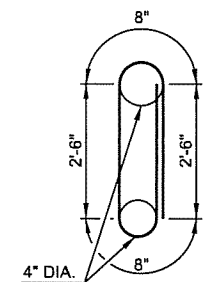
SW1 #4 x 5'-8"



DETAIL A (FROM SHEET 34)



SECTION THRU PEDESTRIAN PARAPET AT DRAIN OPENING



SW2 #4 x 8'-10"

PEDESTRIAN PARAPET NOTES:

1. CLASS AA CONCRETE SHALL BE USED IN THE PARAPET. ALL COSTS OF CONCRETE TO BE INCLUDED IN THE PRICE BID PER LINEAR FOOT OF "CONCRETE PARAPET".
2. ALL REINFORCING FOR THE PARAPET SHALL BE EPOXY COATED. THE WEIGHT OF THE SR1 AND L BARS WILL BE MEASURED AND PAID FOR AS "EPOXY COATED REINFORCING STEEL". ALL OTHER REINFORCING STEEL IN THE PARAPET SHALL BE INCLUDED IN THE UNIT PRICE BID PER LINEAR FOOT OF "CONCRETE PARAPET".
3. AT THE EXPANSION JOINTS IN THE DECK SLAB, MATCH THE WIDTH OF THE OPENING BETWEEN THE ENDS OF THE PARAPET WITH THE OPENINGS OF THE EXPANSION JOINTS.
4. PROVIDE DOUBLE 3/4" CHAMFERS OR 3/4" DEEP SAWCUT AT THE CONTROL CRACK JOINTS.
5. FOR SR1 BAR BEND SEE STD TR4-2.
6. FOR L BAR BEND SEE STD. FSHP-42-2.

N:\11399\200-11399-13001-05\CAD\SheetFiles\JP 28865 (04) -35-BR-A-Traffic.Rail.Dtl.2.dgn

6/7/2016

2ND STREET OVER I-444 - BRIDGE 'A'

DESIGN	LWN	3-16	OKLAHOMA DEPARTMENT OF TRANSPORTATION
DRAWN	MRM	3-16	
CHECKED	JSH	3-16	
APPROVED			
SQUAD	TT		
PARAPET AND TRAFFIC RAIL DETAILS			
SHEET 2 OF 2			
STATE JOB NO. 28865(04) SHEET NO. 35			
TULSA CO.			2ND STREET