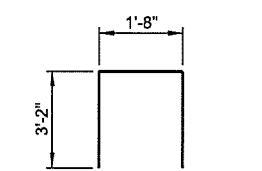
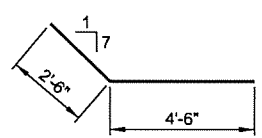


*SEE 2'-0" PARAPET DETAILS THIS SHEET.

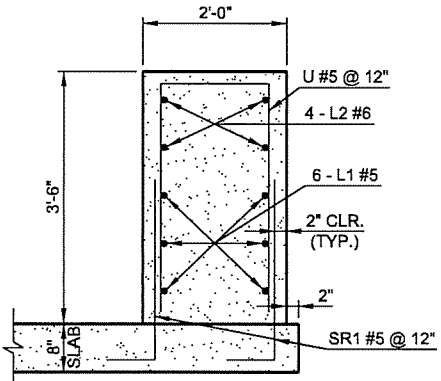


① U #5 x 8'-0" (6 EA.)



① L1 #5 x 7'-0" (12 EA.)
① L2 #6 x 7'-0" (8 EA.)

① REINFORCING SHOWN FOR INFORMATION ONLY.



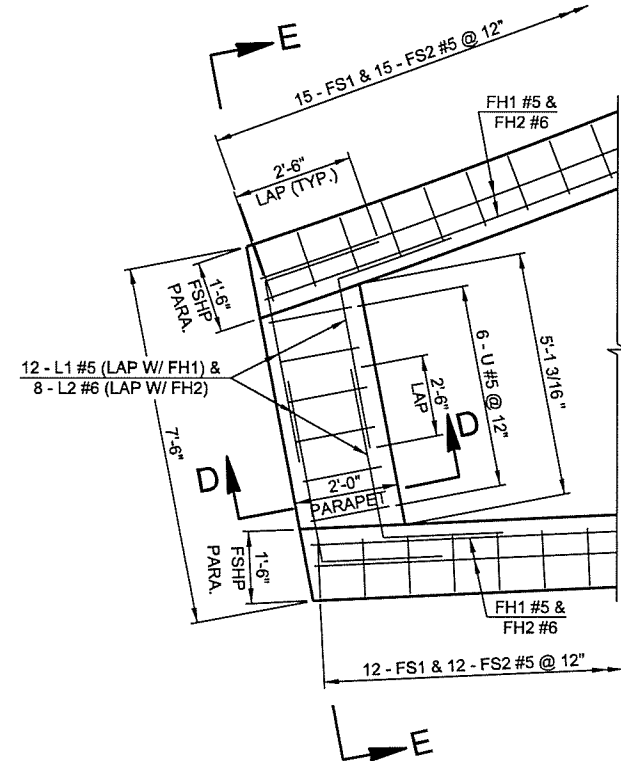
SECTION D-D

2'-0" PARAPET NOTES:

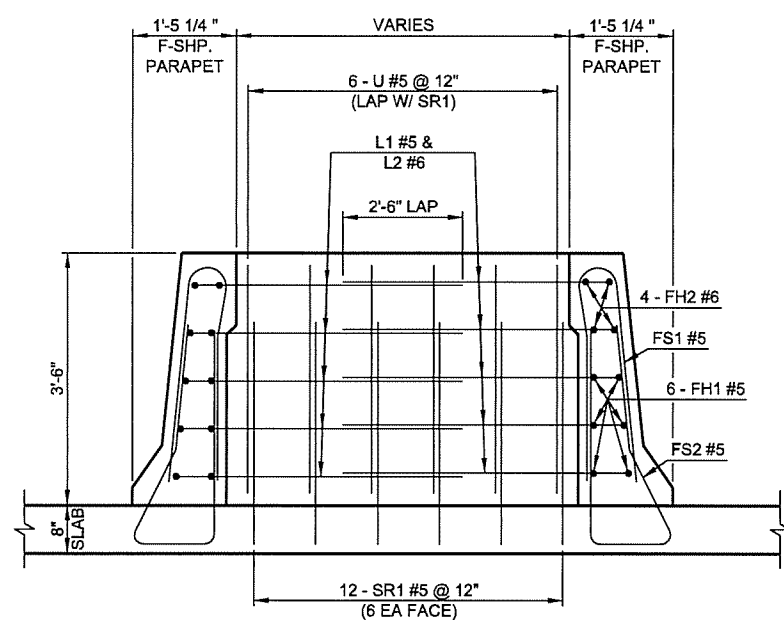
CLASS AA CONCRETE:
CLASS AA CONCRETE SHALL BE USED IN THE PARAPET. ALL COSTS OF CONCRETE TO BE INCLUDED IN THE PRICE BID PER LINEAR FOOT OF "42" F-SHAPED PARAPET".

REINFORCING STEEL:
ALL REINFORCING STEEL USED IN THE PARAPET IS TO BE EPOXY COATED. PLACE AND TIE ALL SR1 BARS BEFORE THE CONCRETE IS PLACED IN THE DECK SLAB. SR1 BARS WILL BE MEASURED AND PAID FOR AS "EPOXY COATED REINFORCING STEEL". COST OF ALL OTHER REINFORCING STEEL SHALL BE INCLUDED IN THE UNIT BID PRICE OF "42" F-SHAPED PARAPET".

ADDITIONAL DETAIL:
FOR ADDITIONAL DETAILS OF THE F-SHAPED PARAPET, FH1, FH2, FS1 AND FS2 REINFORCING BARS, SEE STD. FSHP-42-2. FOR BAR BEND OF SR1 REINFORCING BAR SEE STD. TR4-2.



PARAPET DETAIL PLAN



SECTION E-E

2ND STREET OVER I-444 - BRIDGE 'A'

DESIGN	JSH	2-16
DRAWN	MRM	2-16
CHECKED	LWN	3-16
APPROVED		
SQUAD	TT	

OKLAHOMA DEPARTMENT OF TRANSPORTATION

DECK SLAB REINFORCING DETAILS

SHEET 2 OF 4

STATE JOB NO. 28865(04) SHEET NO. 31

TULSA CO. 2ND STREET