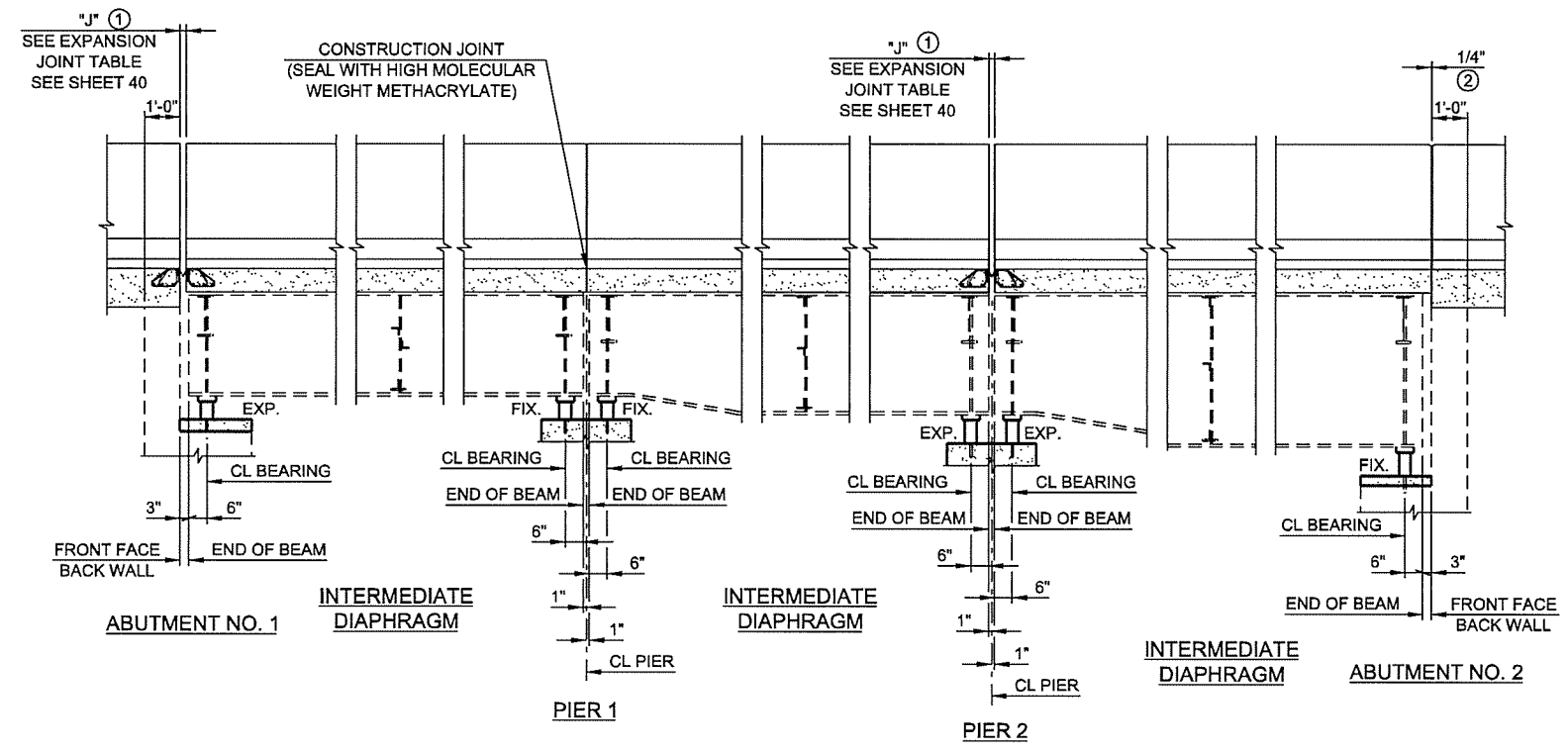
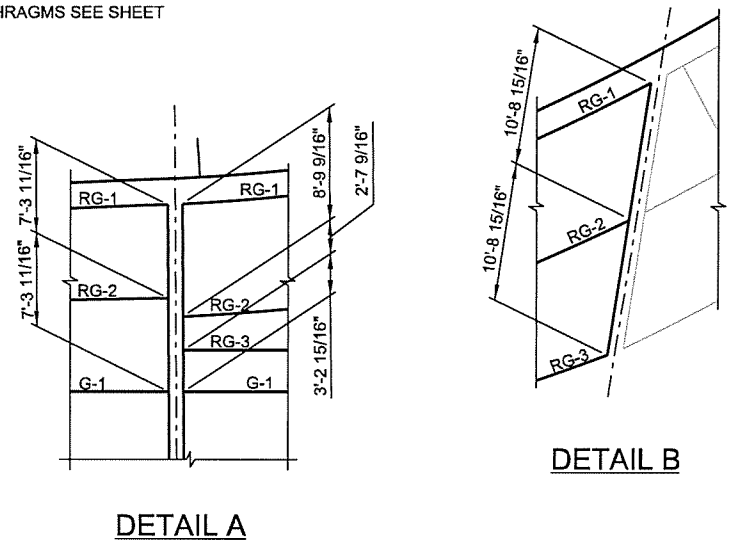
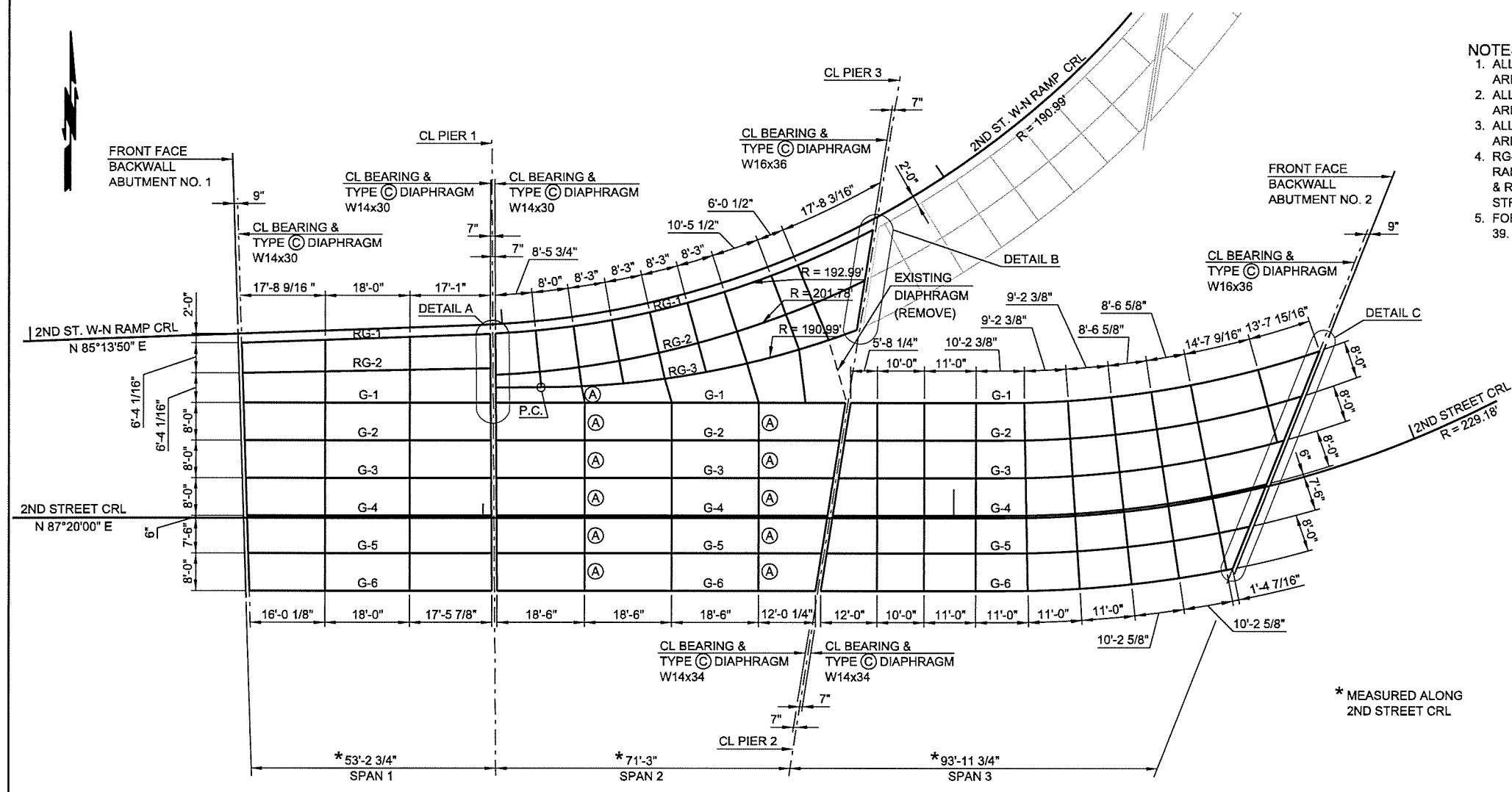
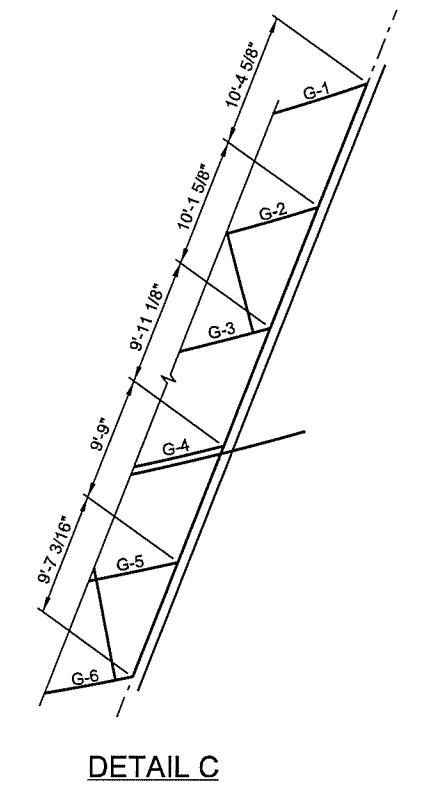


- NOTES:**
1. ALL SPAN 1 INTERMEDIATE DIAPHRAGMS ARE TYPE (A).
 2. ALL SPAN 2 INTERMEDIATE DIAPHRAGMS ARE TYPE (B) UNLESS NOTED OTHERWISE.
 3. ALL SPAN 3 INTERMEDIATE DIAPHRAGMS ARE TYPE (B).
 4. RG-1 IS CONCENTRIC TO 2ND STREET W-N RAMP CRL. TYPE (B) CROSS BETWEEN RG-1 & RG-2 AND RG-2 & RG-3 ARE RADIAL TO 2ND STREET W-N RAMP CRL.
 5. FOR DETAILS OF DIAPHRAGMS SEE SHEET 39.



- ① PARAPET OPENING SHALL BE THE SAME AS DECK SLAB OPENING AT EXPANSION JOINT.
- ② PLACE A 1/4" THICK PERFORMED EXPANSION MATERIAL IN EACH PARAPET VERTICAL CONSTRUCTION JOINT. SEE STD. TR4-2 AND FSHP-42-2 FOR ADDITIONAL DETAILS



DESIGN	JSH	1-16	OKLAHOMA DEPARTMENT OF TRANSPORTATION FRAMING PLAN AND LONGITUDINAL SECTION STATE JOB NO. 28865(04) SHEET NO. 29 TULSA CO. 2ND STREET
DRAWN	MRM	1-16	
CHECKED	LWN	3-16	
APPROVED			
SQUAD	TT		

N:\11399200-11399-13001-05\CAD\SheetFiles\JP 28865 (04) -29-BR-A-Framing.dgn
 6/7/2016