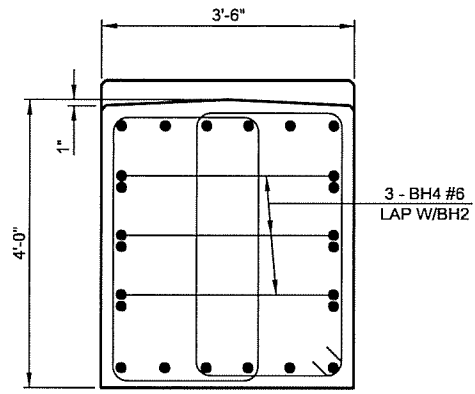
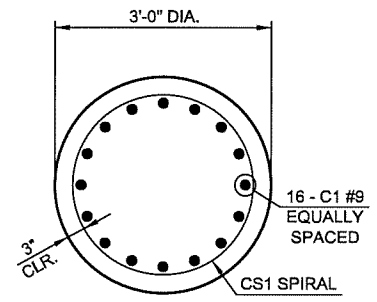


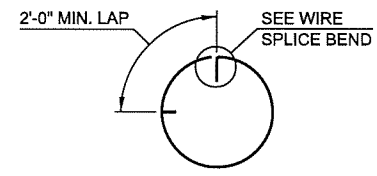
SECTION A-A



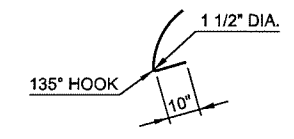
END SECTION



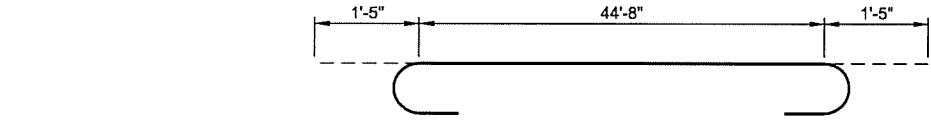
SECTION B-B



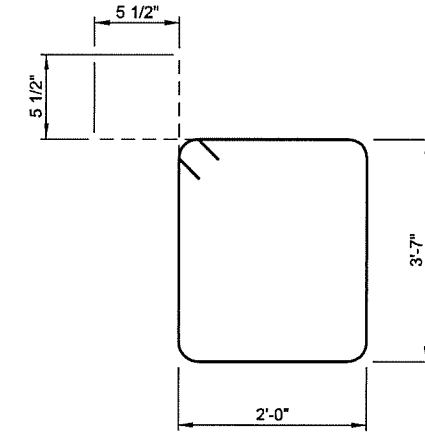
WIRE SPLICE WHEN REQ'D



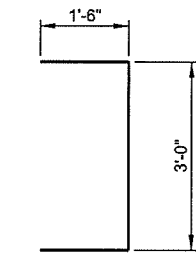
WIRE SPLICE BEND



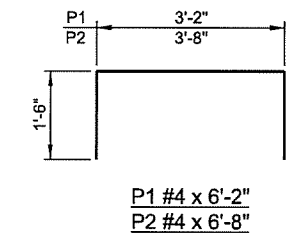
BH1 #10 x 47'-6"



S1 #5 x 12'-1"



BH4 #6 x 6'-0"



P1 #4 x 6'-2"
P2 #4 x 6'-8"

| PIER NO. 2 BAR LIST | | | | |
|-------------------------------|------|-----|--------|---------|
| MARK | SIZE | NO. | FORM | LENGTH |
| EPOXY COATED REINFORCING BARS | | | | |
| BH1 | #10 | 6 | BNT. | 47'-6" |
| BH2 | #6 | 6 | STR. | 44'-8" |
| BH3 | #9 | 6 | STR. | 44'-8" |
| BH4 | #6 | 6 | BNT. | 6'-0" |
| C1 | #9 | 48 | STR. | 20'-8" |
| CS1 | W20 | 3 | SPIRAL | 290'-2" |
| S1 | #5 | 92 | BNT. | 12'-1" |
| P1 | #4 | 30 | BNT. | 6'-2" |
| P2 | #4 | 30 | BNT. | 6'-8" |

| PIER NO. 2 SUMMARY OF QUANTITIES | | |
|--------------------------------------|------|--------|
| DESCRIPTION | UNIT | TOTAL |
| CLASS A CONCRETE | CY | 38.0 |
| EPOXY COATED REINFORCING STEEL | LB | 7980.0 |
| WATER REPELLENT (VISUALLY INSPECTED) | SY | 112.0 |

N:\11399200-11399-13001-05\CAD\SheetFiles\JP_28865 (04) -25-BR.A-Pier.2.dgn
 6/7/2016

2ND STREET OVER I-444 - BRIDGE 'A'

| | | | |
|----------|-----|------|---|
| DESIGN | LWN | 2-16 | OKLAHOMA DEPARTMENT OF TRANSPORTATION PIER NO. 2 DETAILS SHEET 2 OF 2 STATE JOB NO. 28865(04) SHEET NO. 25 TULSA CO. 2ND STREET |
| DRAWN | MRM | 2-16 | |
| CHECKED | JSH | 3-16 | |
| APPROVED | | | |
| SQUAD | TT | | |