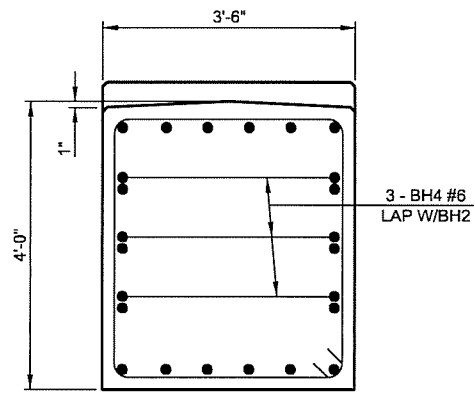
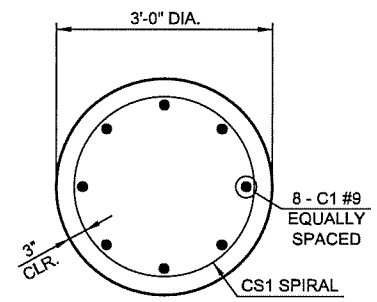


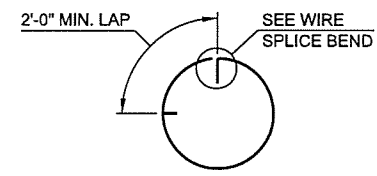
SECTION A-A



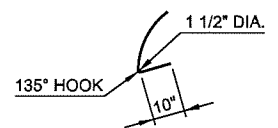
END SECTION



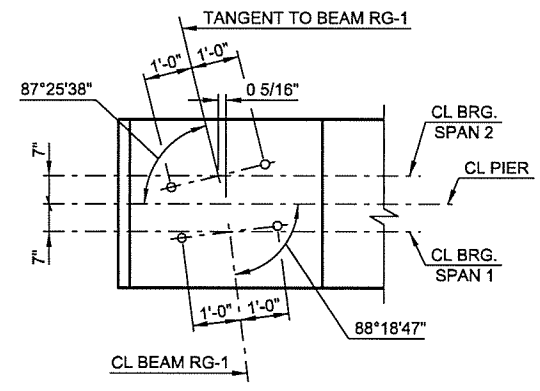
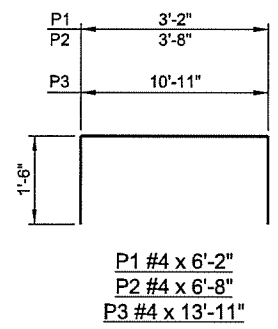
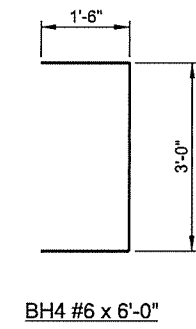
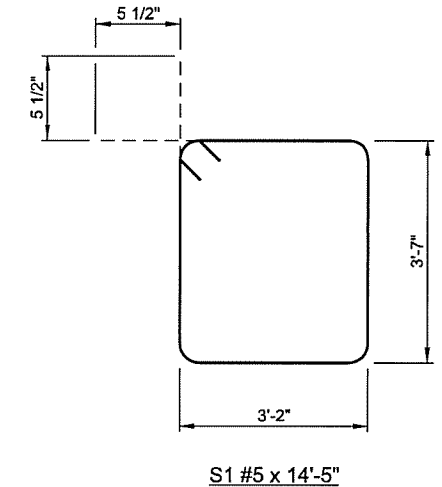
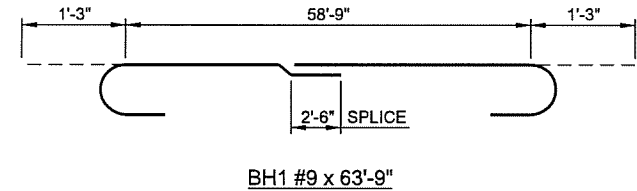
SECTION B-B



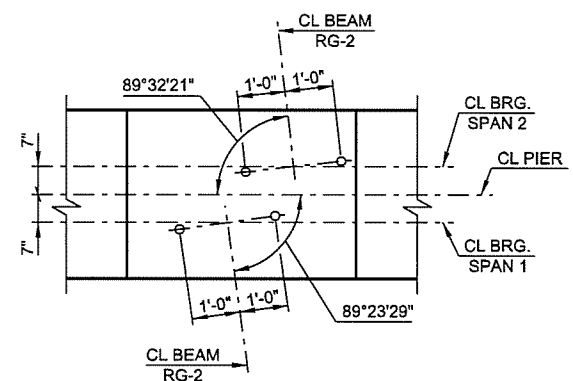
WIRE SPLICE WHEN REQ'D



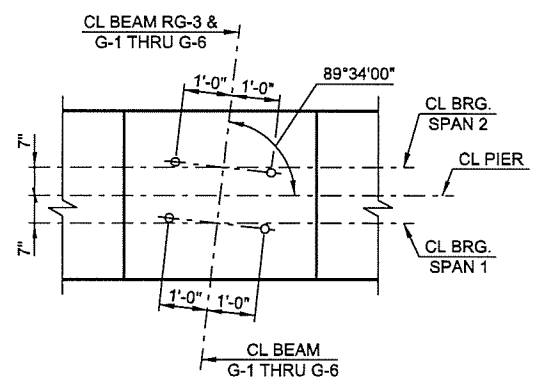
WIRE SPLICE BEND



RG-1



RG-2



RG-3 & G-1 THRU G-6

ANCHOR BOLT LAYOUTS

PIER NO. 1 BAR LIST				
MARK	SIZE	NO.	FORM	LENGTH
EPOXY COATED REINFORCING BARS				
① BH1	#9	6	BNT.	63'-9"
BH2	#6	6	STR.	58'-9"
BH3	#9	6	STR.	58'-9"
BH4	#6	6	BNT.	6'-0"
C1	#9	32	STR.	17'-1"
CS1	W20	4	SPIRAL	233'-9"
S1	#5	75	BNT.	14'-5"
P1	#4	44	BNT.	6'-2"
P2	#4	30	BNT.	6'-8"
P3	#4	5	BNT.	13'-11"

① INCLUDES 2'-6" LAP

PIER NO. 1 SUMMARY OF QUANTITIES		
DESCRIPTION	UNIT	TOTAL
CLASS A CONCRETE	CY	47.2
EPOXY COATED REINFORCING STEEL	LB	7070.0
WATER REPELLENT (VISUALLY INSPECTED)	SY	136.0

2ND STREET OVER I-444 - BRIDGE 'A'

DESIGN	LWN	2-16
DRAWN	MRM	2-16
CHECKED	JSH	3-16
APPROVED		
SQUAD	TT	

OKLAHOMA DEPARTMENT OF TRANSPORTATION

PIER NO. 1 DETAILS
SHEET 2 OF 2

STATE JOB NO. 28865(04) SHEET NO. 23
TULSA CO. 2ND STREET