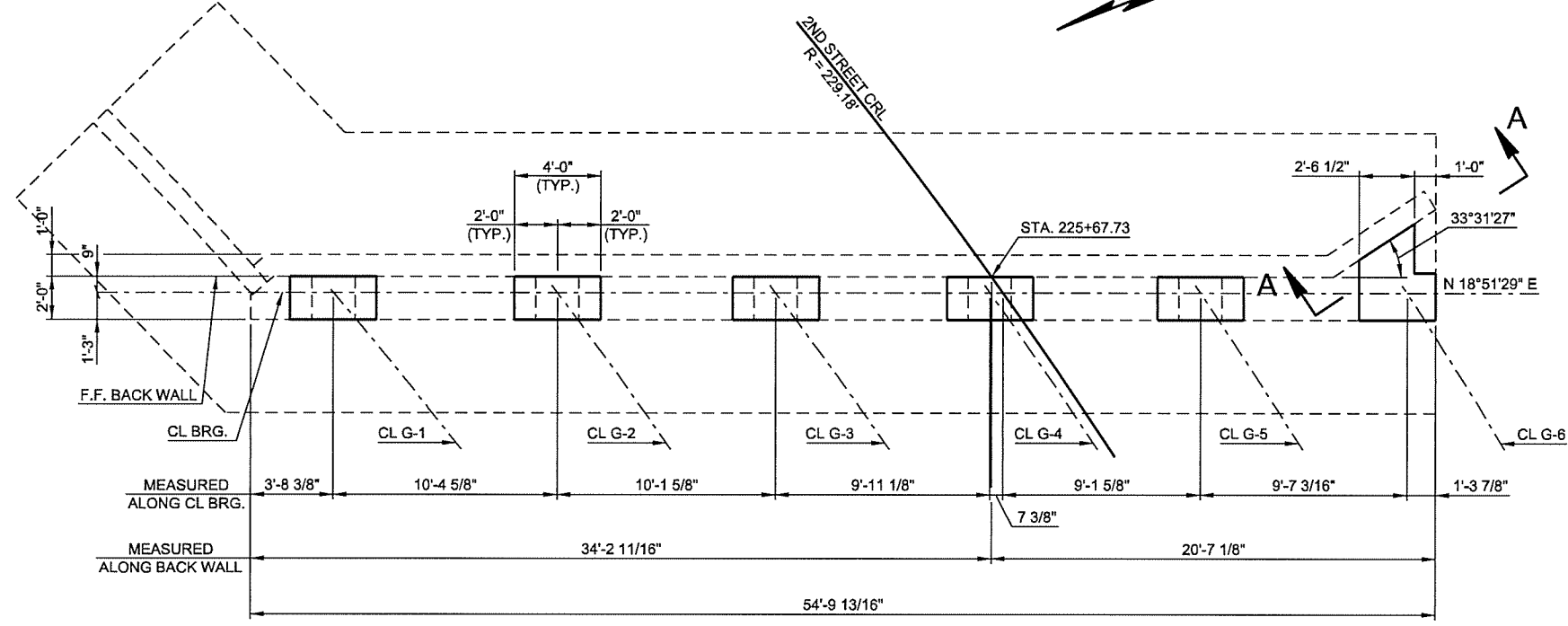


DESCRIPTION	REVISIONS	DATE
-------------	-----------	------

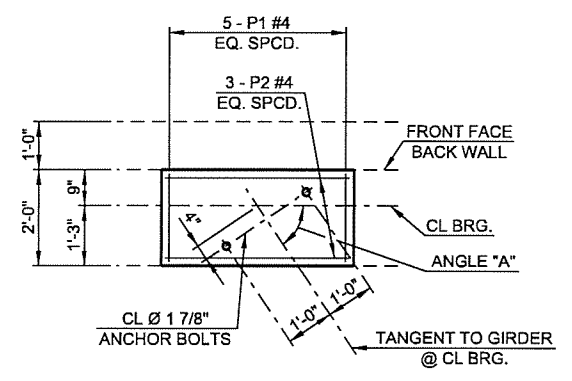


PLAN

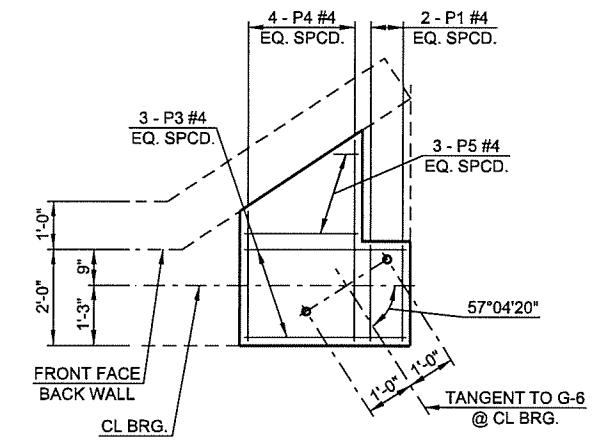
GIRDER	ANGLE "A"
G-1	49°28'21"
G-2	51°17'26"
G-3	52°58'11"
G-4	54°26'09"
G-5	55°48'32"

FOR SECTION A-A
SEE SHEET 21

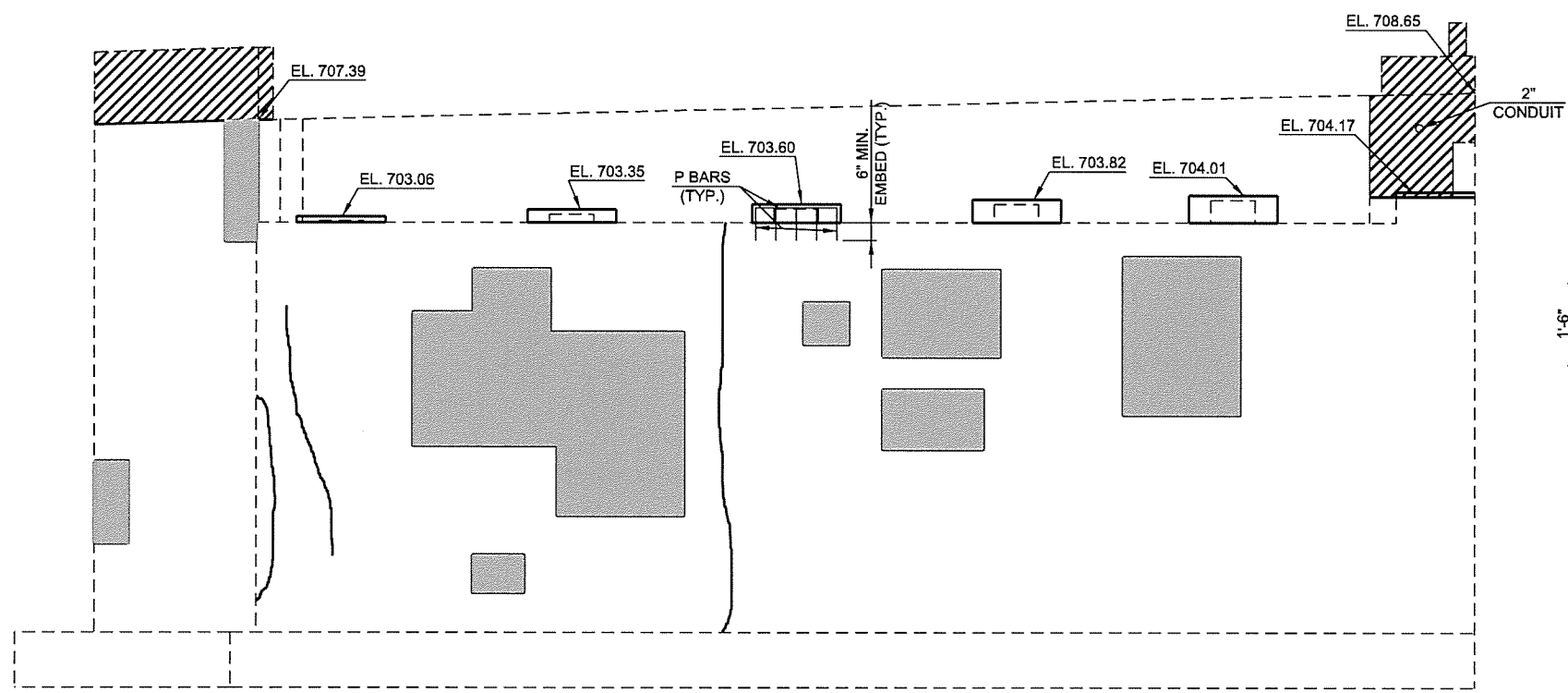
- PNEUMATICALLY PLACED MORTAR
- EPOXY INJECTION
- CONCRETE REMOVAL (FOR DETAILS SEE SHEET 21 & 52)



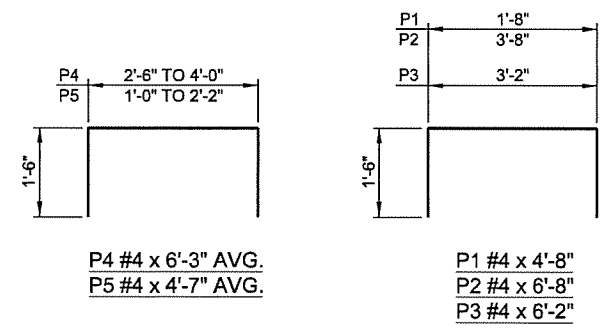
PEDESTAL DETAIL PLAN
(G-1 THRU G-5)



PEDESTAL DETAIL PLAN
(G-6)



ELEVATION



ANCHORAGE SYSTEM

THE CONTRACTOR SHALL USE AN ANCHORAGE SYSTEM THAT HAS BEEN APPROVED BY ODOT'S MATERIAL DIVISION. THE ANCHORAGE SYSTEM SHALL BE CAPABLE OF DEVELOPING THE FULL STRENGTH OF THE REINFORCING STEEL THAT IS TO BE ANCHORED. ANCHORAGES SHALL BE INSTALLED IN ACCORDANCE WITH THE MANUFACTURER'S SPECIFICATIONS FOR THE SYSTEM USED AND ODOT STANDARD SPECIFICATIONS SECTION 509.04(d)3. ALL COST OF ANCHORAGE ASSEMBLIES INCLUDING LABOR, MATERIALS, TOOLS, DRILLING AND INCIDENTALS NECESSARY TO COMPLETE THE WORK SHALL BE INCLUDED IN THE PRICE BID PER POUND OF "EPOXY COATED REINFORCING".

ABUTMENT NO. 2 BAR LIST						
MARK	SIZE	NO.	FORM	LENGTH	LENGTH VARIES	
EPOXY COATED REINFORCING BARS						
P1	#4	27	BNT	4'-8"		
P2	#4	15	BNT	6'-8"		
P3	#4	3	BNT	6'-2"		
P4	#4	4	BNT	6'-3" AVG.	5'-6" TO 7'-0"	
P5	#4	3	BNT	4'-7" AVG.	4'-0" TO 5'-2"	

ABUTMENT NO. 2 QUANTITIES		
DESCRIPTION	UNIT	TOTAL
CLASS A CONCRETE	CY	1.0
EPOXY COATED REINFORCING	LBS	190
WATER REPELLENT (VISUALLY INSPECTED)	SY	180
PREPARATION OF CRACKS ABOVE WATER	LF	43
EPOXY RESIN ABOVE WATER	GAL	1.0
PNEUMATICALLY PLACED MORTAR	SY	20
(PL) REPAIR BRIDGE ITEM (TYPE A)	LSUM	1.0
(SP) CORROSION INHIBITOR (SURFACE APPLIED)	SY	45
REMOVAL OF BRIDGE ITEM (TYPE C)	EA	6

2ND STREET OVER I-444 - BRIDGE "A"

DESIGN	JWB	3-1-6
DRAWN	MRM	3-1-6
CHECKED	JSH	3-1-6
APPROVED		
SQUAD	TT	

OKLAHOMA DEPARTMENT OF TRANSPORTATION

ABUTMENT NO. 2 REPAIRS
SHEET 1 OF 2

STATE JOB NO. 28865(04) SHEET NO. 20
TULSA CO. 2ND STREET

N:\11399\200-11399-13001-05\CAD\SheetFiles\JP 28865 (04) -20-BR-A-Abut. 2.1.dgn
 6/6/2016