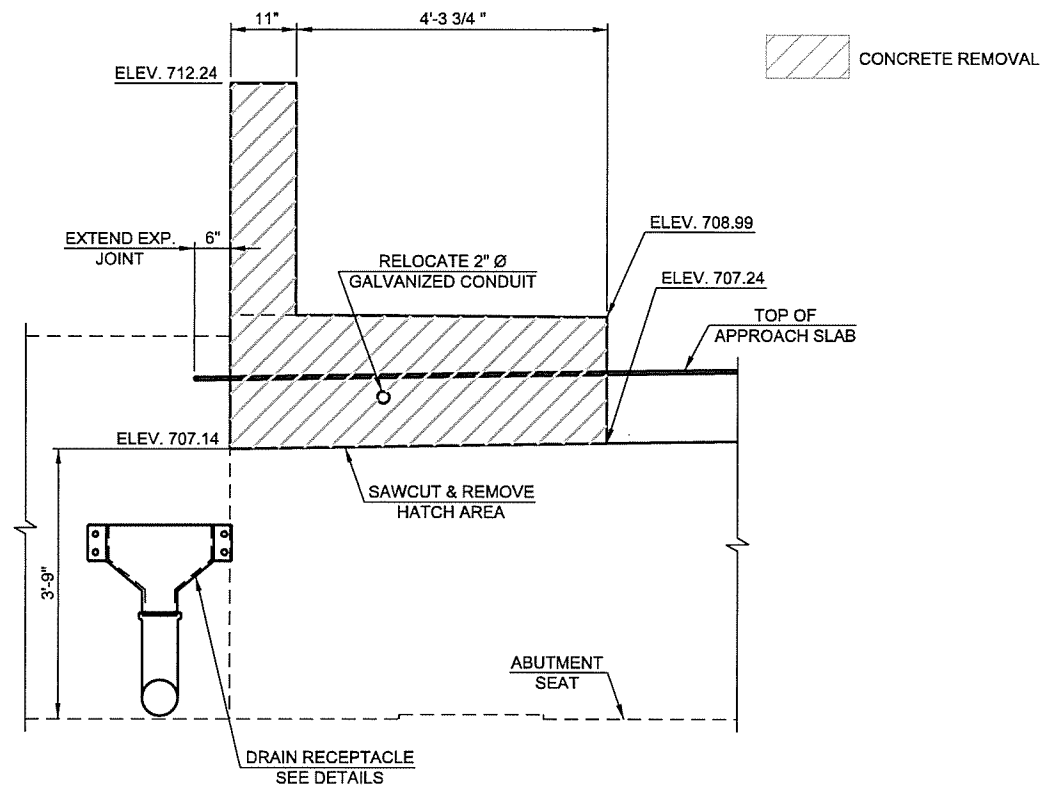
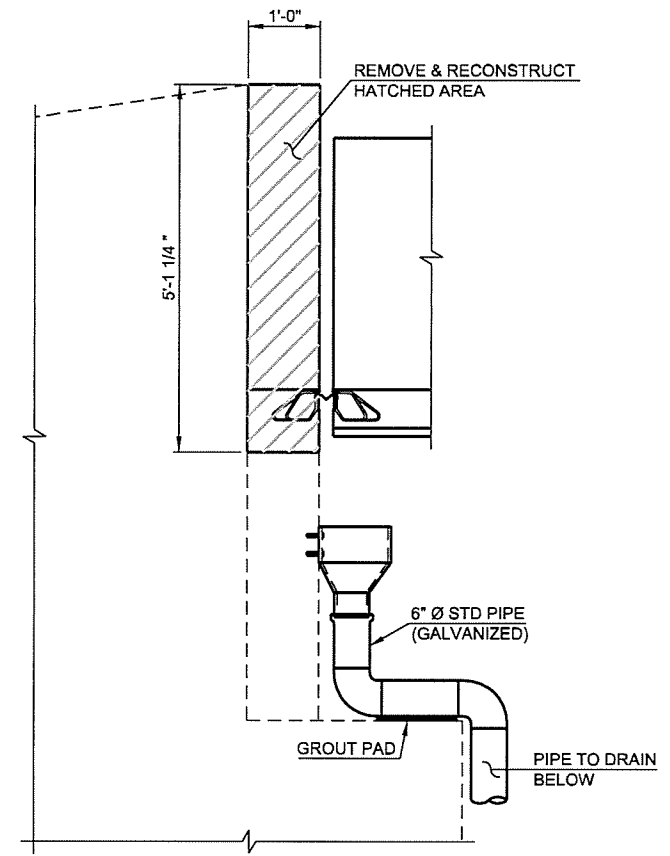


| DESCRIPTION | REVISIONS | DATE |
|-------------|-----------|------|
| | | |

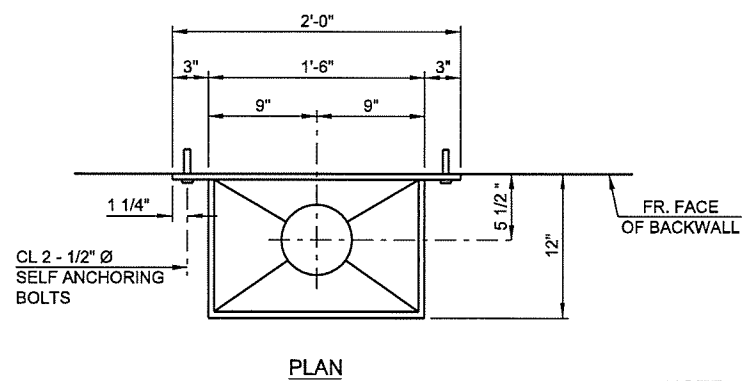


VIEW F-F
(FROM SHEET 47)



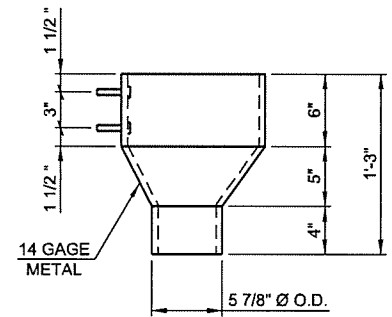
VIEW G-G
(FROM SHEET 47)

NOTE:
 COSTS TO REMOVE CONCRETE AT ABUTMENT NO. 1 BACK WALL AND WING WALL TO BE INCLUDED WITH ITEM 619(B) REMOVAL OF BRIDGE ITEM (TYPE A).
 COSTS TO RECONSTRUCT PORTION OF SOUTH WING WALL TO BE INCLUDED WITH ITEM 504(A) APPROACH SLAB.
 COSTS OF DRAIN RECEPTACLE, GROUT PAD, PIPE, FITTINGS AND CLAMPS TO BE INCLUDED WITH ITEM 506(A) STRUCTURAL STEEL. THERE IS AN ESTIMATED 491 LBS OF STRUCTURAL STEEL IN THE DRAIN RECEPTACLE, PIPE, FITTINGS AND CLAMPS.



PLAN

NOTE:
 GALVANIZE RECEPTACLE
 AFTER FABRICATION



ELEVATION

DETAIL OF DRAIN RECEPTACLE
 AT ABUTMENT NO. 1

N:\11399\200-11399-13001-05\CAD\SheetFiles\JP 28865 (04) -19-BR.A-Abut. 1.2.dgn
 6/6/2016

| | | | | | |
|----------|--|--|-----|------|--|
| DESIGN | | | JWB | 3-16 | 2ND STREET OVER I-444 - BRIDGE 'A' OKLAHOMA DEPARTMENT OF TRANSPORTATION ABUTMENT NO. 1 REPAIRS SHEET 2 OF 2 STATE JOB NO. 28865(04) SHEET NO. 19 TULSA CO. 2ND STREET |
| DRAWN | | | MRM | 3-16 | |
| CHECKED | | | JSH | 3-16 | |
| APPROVED | | | | | |
| SQUAD | | | TT | | |