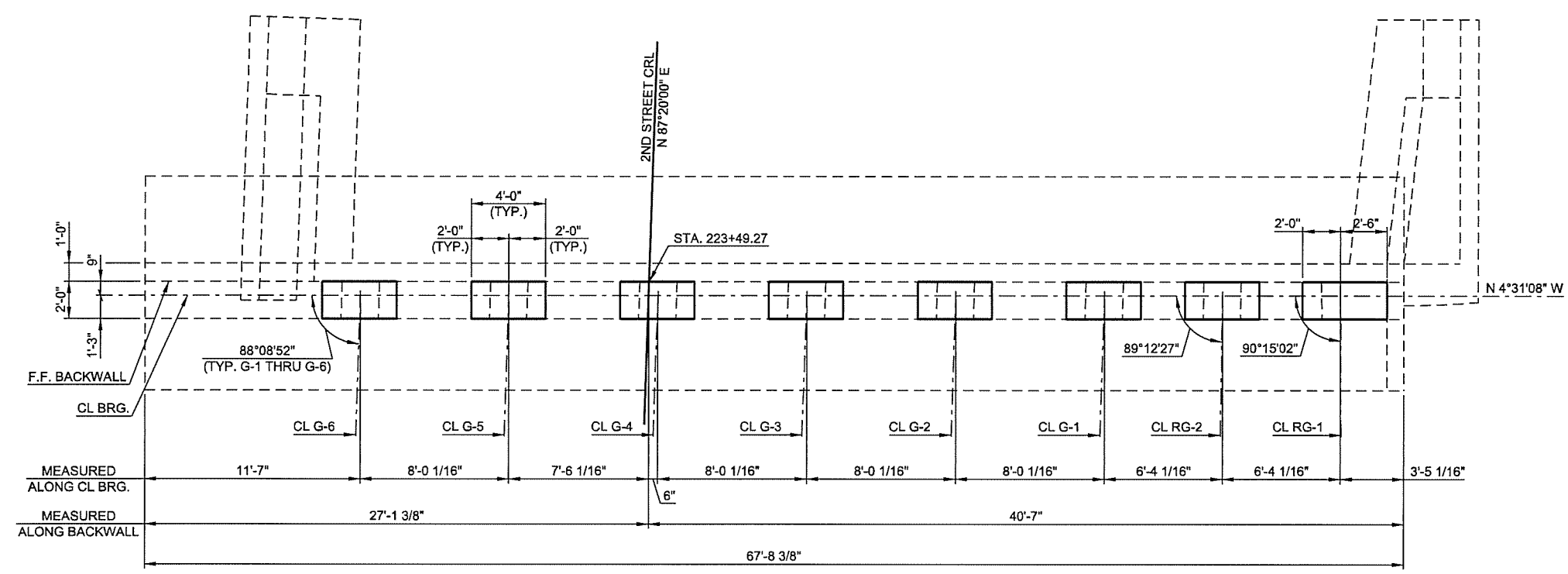
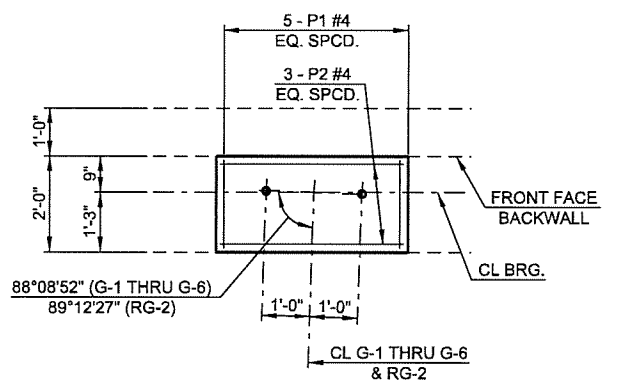


DESCRIPTION	REVISIONS	DATE
-------------	-----------	------

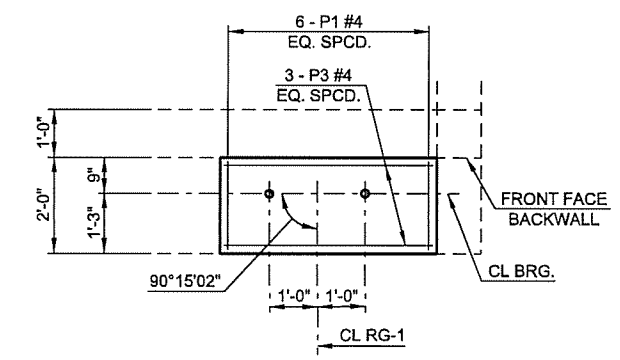


PLAN

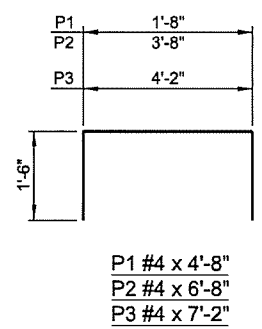
- PNEUMATICALLY PLACED MORTAR
- EPOXY INJECTION
- CONCRETE REMOVAL (FOR DETAILS SEE SHEET 19 & 47)



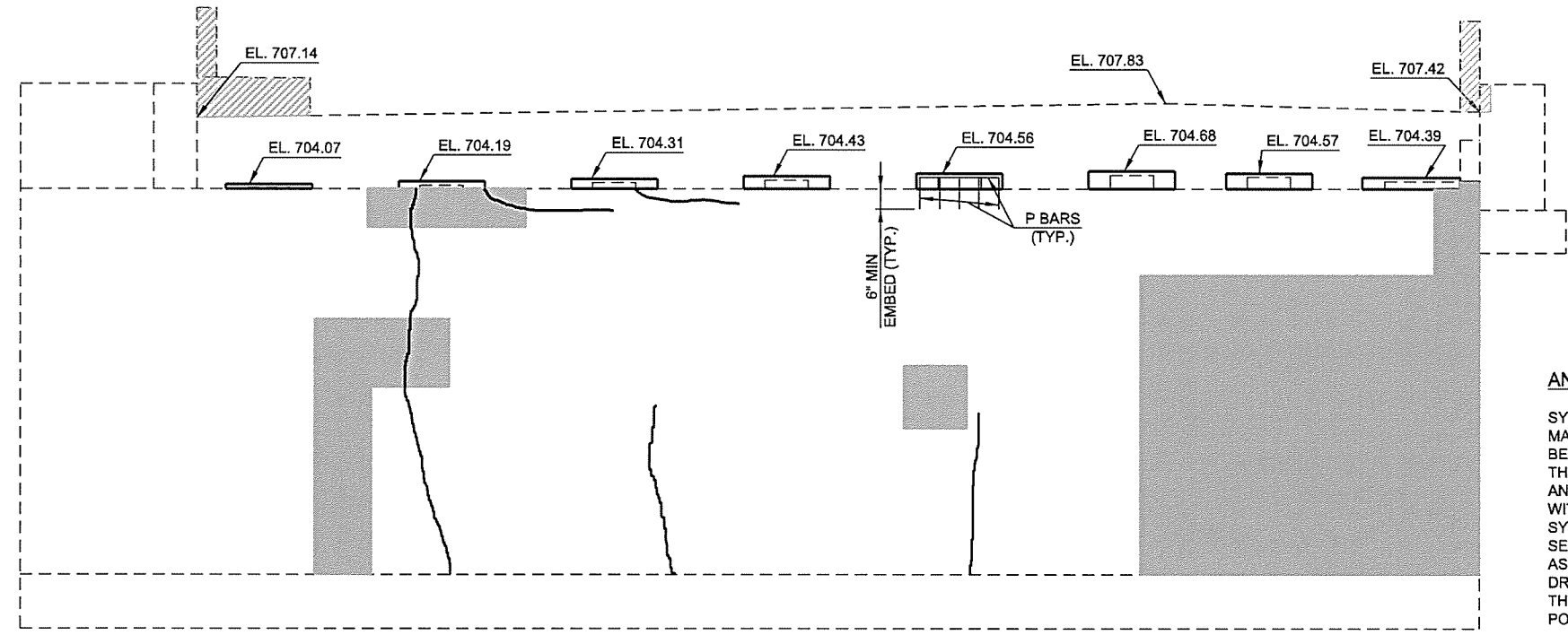
PEDESTAL DETAIL PLAN  
(G-1 THRU G-6 & RG-2)



PEDESTAL DETAIL PLAN  
(RG-1)



ABUTMENT NO. 1 BAR LIST				
MARK	SIZE	NO.	FORM	LENGTH
EPOXY COATED REINFORCING BARS				
P1	#4	41	BNT	4'-8"
P2	#4	15	BNT	6'-8"
P3	#4	3	BNT	7'-2"



ELEVATION

**ANCHORAGE SYSTEM**

THE CONTRACTOR SHALL USE AN ANCHORAGE SYSTEM THAT HAS BEEN APPROVED BY ODOT'S MATERIAL DIVISION. THE ANCHORAGE SYSTEM SHALL BE CAPABLE OF DEVELOPING THE FULL STRENGTH OF THE REINFORCING STEEL THAT IS TO BE ANCHORED. ANCHORAGES SHALL BE INSTALLED IN ACCORDANCE WITH THE MANUFACTURER'S SPECIFICATIONS FOR THE SYSTEM USED AND ODOT STANDARD SPECIFICATIONS SECTION 509.04(d)3. ALL COST OF ANCHORAGE ASSEMBLIES INCLUDING LABOR, MATERIALS, TOOLS, DRILLING AND INCIDENTALS NECESSARY TO COMPLETE THE WORK SHALL BE INCLUDED IN THE PRICE BID PER POUND OF "EPOXY COATED REINFORCING".

ABUTMENT NO. 1 QUANTITIES		
DESCRIPTION	UNIT	TOTAL
STRUCTURAL STEEL	LBS	491
CLASS A CONCRETE	CY	1.0
EPOXY COATED REINFORCING	LBS	210
WATER REPELLENT (VISUALLY INSPECTED)	SY	190
PREPARATION OF CRACKS ABOVE WATER	LF	48
EPOXY RESIN ABOVE WATER	GAL	1.0
PNEUMATICALLY PLACED MORTAR	SY	35
(SF) CORROSION INHIBITOR (SURFACE APPLIED)	SY	54
REMOVAL OF BRIDGE ITEM (TYPE A)	LSUM	1
REMOVAL OF BRIDGE ITEM (TYPE C)	EA	8

2ND STREET OVER I-444 - BRIDGE 'A'

DESIGN	JSH	3-1-6
DRAWN	MRM	3-1-6
CHECKED	LWN	3-1-6
APPROVED		
SQUAD	TT	

**OKLAHOMA DEPARTMENT OF TRANSPORTATION**

**ABUTMENT NO. 1 REPAIRS**  
SHEET 1 OF 2

STATE JOB NO. 28865(04) SHEET NO. 18  
TULSA CO. 2ND STREET

N:\11399\200-11399-13001-05\CAD\SheetFiles\JP 28865 (04) -18-BR-A-Abut. 1.1.dgn 6/6/2016