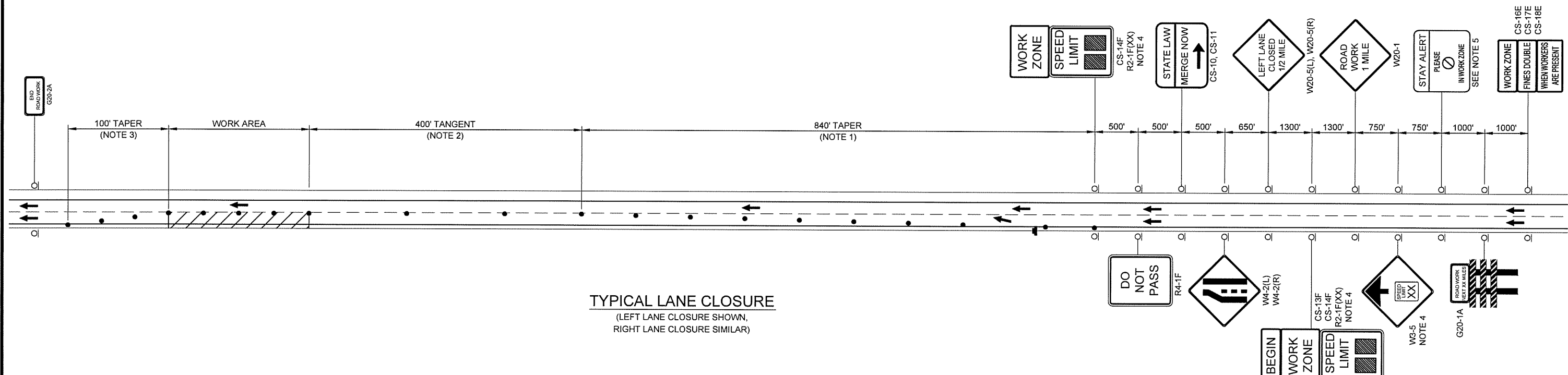


DESCRIPTION	REVISIONS	DATE



TYPICAL LANE CLOSURE
(LEFT LANE CLOSURE SHOWN,
RIGHT LANE CLOSURE SIMILAR)

NOTES 1:
MAXIMUM SPACING BETWEEN CHANNELIZING DEVICES (FEET) SHALL BE EQUAL TO THE POSTED SPEED LIMIT (M.P.H.) WITH THE FOLLOWING EXCEPTIONS. SPACING SHALL NOT EXCEED 25 FEET FOR CONES OR TUBE CHANNELIZERS. SPACING SHALL NOT EXCEED 50 FEET FOR TYPE II BARRICADES, VERTICAL, PANELS OR DRUMS.

NOTE 2:
MAXIMUM SPACING BETWEEN CHANNELIZING DEVICES (FEET) SHALL BE EQUAL TO TWICE THE POSTED SPEED LIMIT (M.P.H.) WITH THE FOLLOWING EXCEPTIONS. SPACING SHALL NOT EXCEED 50 FEET FOR CONES OR TUBE CHANNELIZERS. SPACING SHALL NOT EXCEED 100 FEET FOR TYPE II BARRICADES, VERTICAL PANELS OR DRUMS.

NOTE 3:
DOWNSTREAM TAPERS SHALL CONTAIN A MINIMUM OF FOUR (4) CHANNELIZING DEVICES

NOTE 4:
CONSTRUCTION SPEED LIMIT TO BE DETERMINED BY THE DIVISION ENGINEER.

NOTE 5:
SEE SUMMARY OF PAY QUANTITIES (TRAFFIC) FOR DETAIL

ALL CONFLICTING PAVEMENT MARKINGS AND RAISED PAVEMENT MARKER REFLECTORS SHALL BE REMOVED AFTER COMPLETION OF THE WORK, THE TEMPORARY INAPPLICABLE PAVEMENT MARKINGS SHALL BE REMOVED.

FOR ADDITIONAL INFORMATION ABOUT TAPER LENGTHS AND SPACING OF CHANNELIZING DEVICES, SEE STANDARD DRAWING TCS2-1-(LATEST REVISION).

- LEGEND**
- CHANNELIZING DEVICE (DRUMS)
 - SIGN
 - ▬ ARROW DISPLAY
 - ▨ WORK AREA

3/29/2016 3:15:10 PM - M:\TECH\TRA TECH\11396 ODOT\EC 1414\FY14\TASK ORDER 3\CAD\SHETS\FILES\33 - TC - LANE.DWG - MARQUART, MATT

DESIGN	MRM	9/15	OKLAHOMA DEPARTMENT OF TRANSPORTATION TULSA COUNTY
DRAWN	MRM	9/15	
CHECKED	JLC	3/16	
APPROVED			
SQUAD	TT		
TRAFFIC CONTROL TYPICAL LANE CLOSURE			STATE JOB NO. 28880(04) SHEET NO. 33