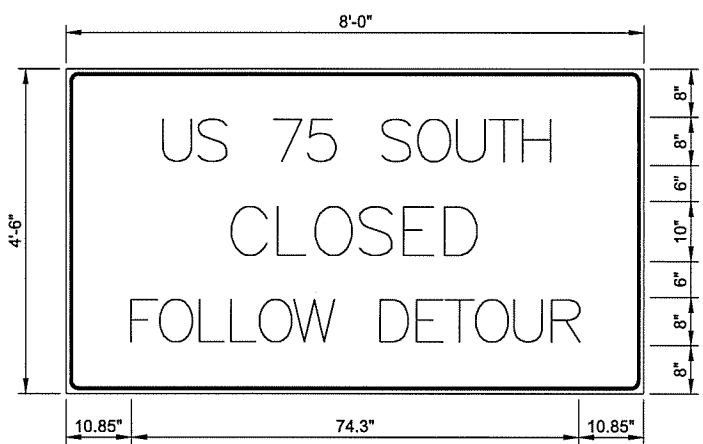
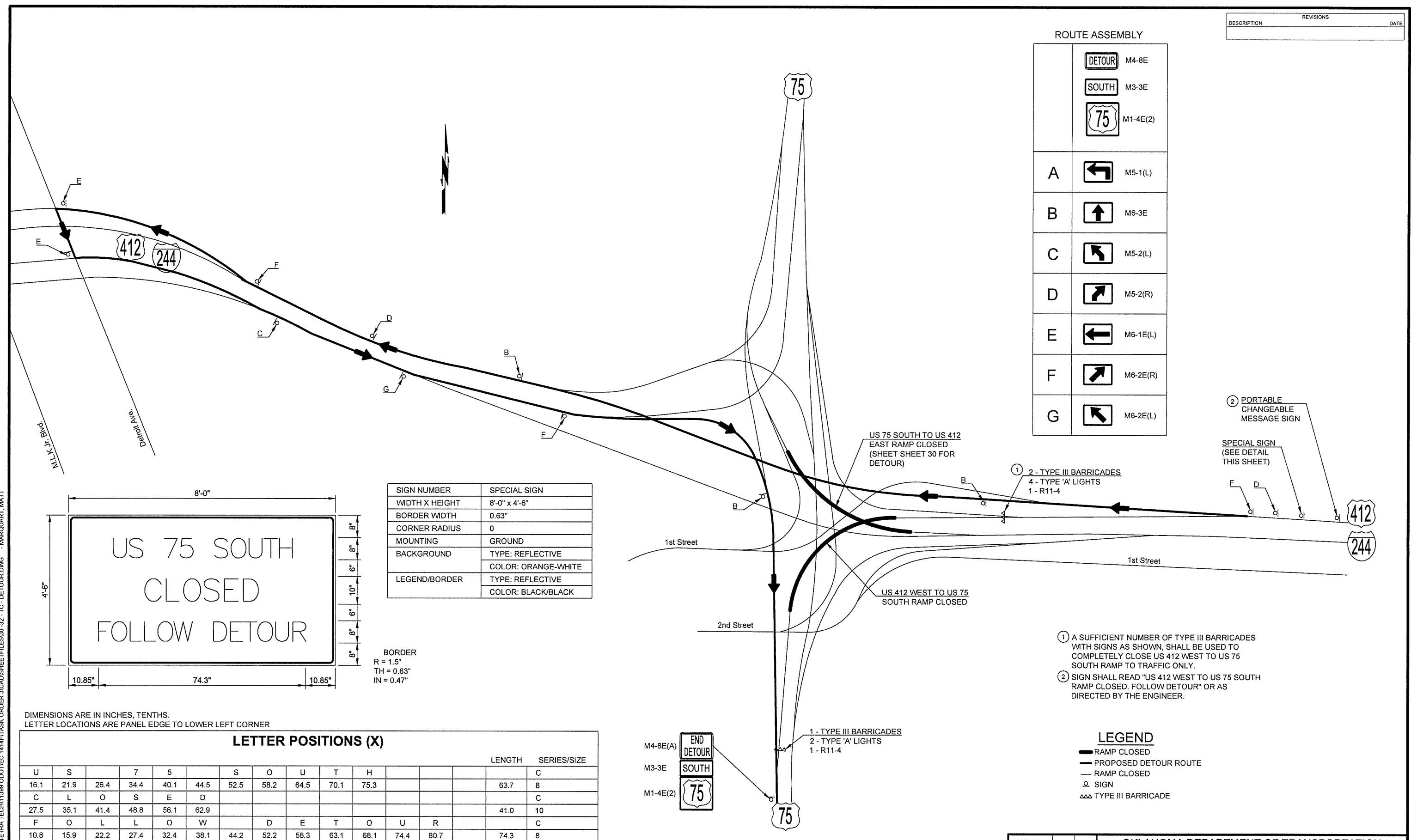


DESCRIPTION	REVISIONS	DATE

ROUTE ASSEMBLY

		M4-8E
		M3-3E
		M1-4E(2)
A		M5-1(L)
B		M6-3E
C		M5-2(L)
D		M5-2(R)
E		M6-1E(L)
F		M6-2E(R)
G		M6-2E(L)



SIGN NUMBER	SPECIAL SIGN
WIDTH X HEIGHT	8'-0" x 4'-6"
BORDER WIDTH	0.63"
CORNER RADIUS	0
MOUNTING	GROUND
BACKGROUND	TYPE: REFLECTIVE COLOR: ORANGE-WHITE
LEGEND/BORDER	TYPE: REFLECTIVE COLOR: BLACK/BLACK

BORDER  
R = 1.5"  
TH = 0.63"  
IN = 0.47"

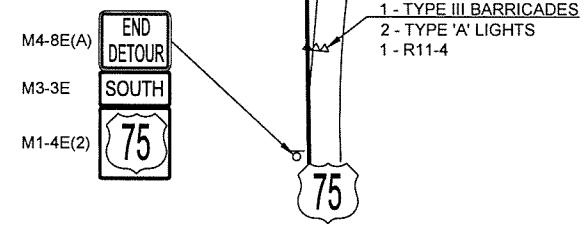
DIMENSIONS ARE IN INCHES, TENTHS.  
LETTER LOCATIONS ARE PANEL EDGE TO LOWER LEFT CORNER

LETTER POSITIONS (X)													LENGTH	SERIES/SIZE
U	S		7	5		S	O	U	T	H				
16.1	21.9	26.4	34.4	40.1	44.5	52.5	58.2	64.5	70.1	75.3			63.7	8
C	L	O	S	E	D									
27.5	35.1	41.4	48.8	56.1	62.9								41.0	10
F	O	L	L	O	W		D	E	T	O	U	R		
10.8	15.9	22.2	27.4	32.4	38.1	44.2	52.2	58.3	63.1	68.1	74.4	80.7	74.3	8

- ① A SUFFICIENT NUMBER OF TYPE III BARRICADES WITH SIGNS AS SHOWN, SHALL BE USED TO COMPLETELY CLOSE US 412 WEST TO US 75 SOUTH RAMP TO TRAFFIC ONLY.
- ② SIGN SHALL READ "US 412 WEST TO US 75 SOUTH RAMP CLOSED. FOLLOW DETOUR" OR AS DIRECTED BY THE ENGINEER.

LEGEND

- RAMP CLOSED
- PROPOSED DETOUR ROUTE
- RAMP CLOSED
- SIGN
- TYPE III BARRICADE



US 412 WEST TO US 75 SOUTH RAMP  
DETOUR

DESIGN	MRM	9/15	OKLAHOMA DEPARTMENT OF TRANSPORTATION	
DRAWN	MRM	9/15	TULSA COUNTY	
CHECKED	JLC	3/16	TRAFFIC CONTROL (DETOUR 2)	
APPROVED				
SQUAD	TT			
STATE JOB NO. 28880(04)			SHEET NO. 31	

3/29/2016 3:11:49 PM - MATETRA TECH\11399.ODOT\EC.1414\TASK ORDER 3\CAD\SHSHEET\FILES\30-32-TC-DETOUR.DWG - MARQUART, MATT