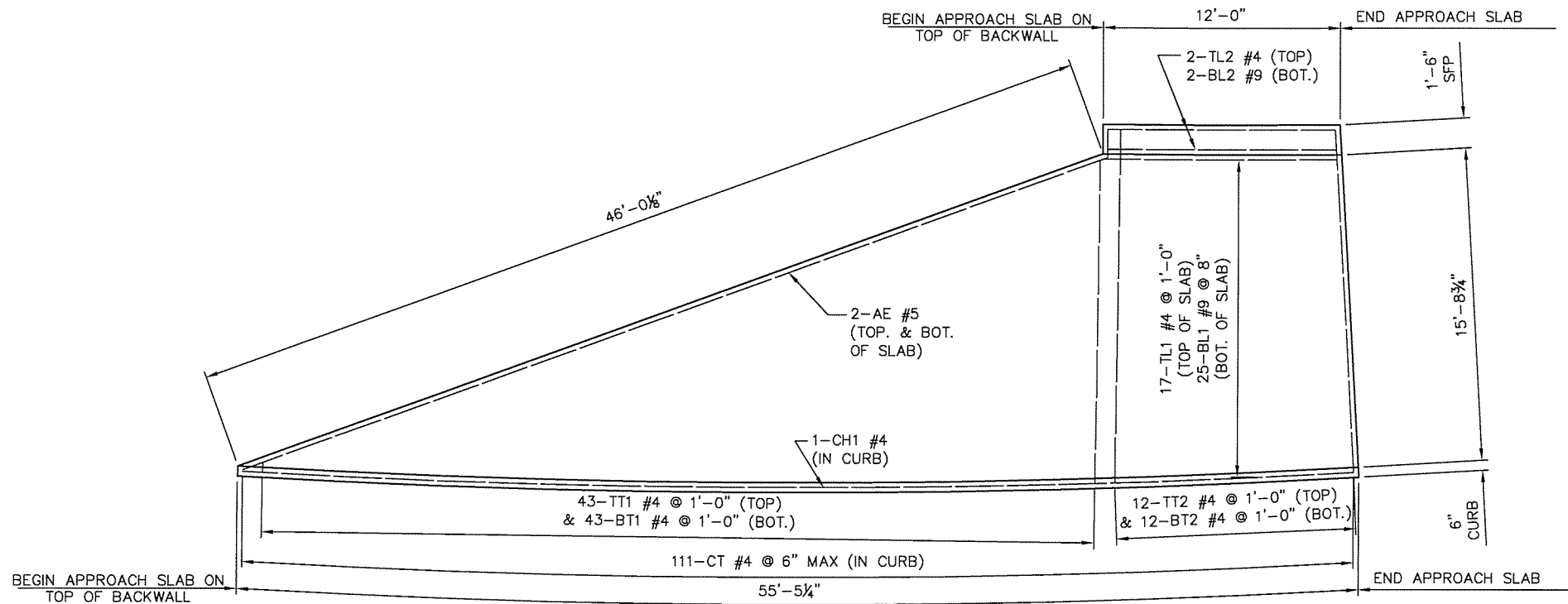
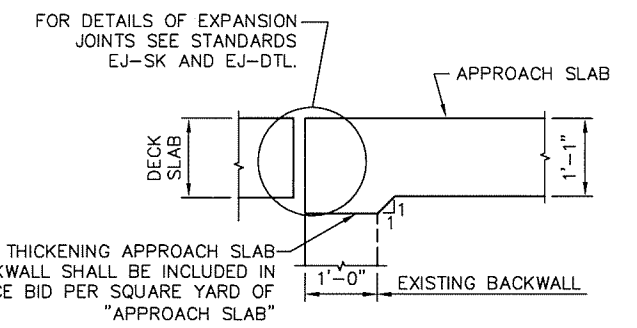


X:\Projects\611-ODOT-IDL North & South Bound Lanes\DWG\Sheets\611-BRIDGE 15A\SHEETS\611-SB-BR15A-AS02.dwg, 3/25/2016 8:33:41 AM, DEP



APPROACH SLAB NO. 2 REINFORCING PLAN

EP BARS PROJECTING FROM APPROACH SLAB INTO TRAFFIC RAILS HAVE BEEN OMITTED FOR CLARITY. SEE STD. SFP1-2 FOR PLACEMENT OF EP BARS.



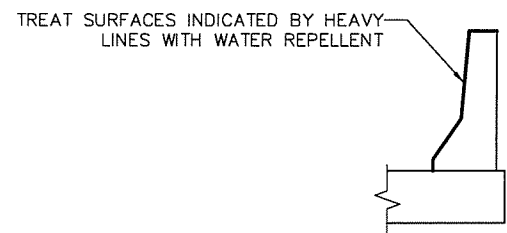
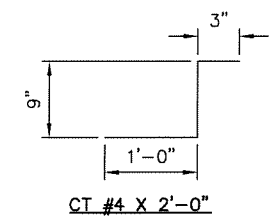
SECTION THROUGH EXPANSION JOINT BETWEEN APPROACH SLAB AND DECK SLAB

ALL COST OF THICKENING APPROACH SLAB AT THE BACKWALL SHALL BE INCLUDED IN THE UNIT PRICE BID PER SQUARE YARD OF "APPROACH SLAB"

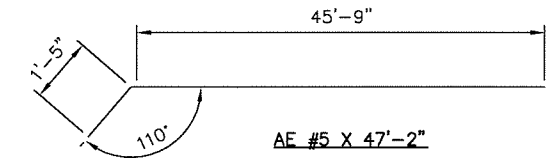
BAR LIST-APPROACH SLAB NO. 2

MARK	NO.	SIZE	FORM	LENGTH	LENGTH VARIATION
EPOXY COATED					
AE	2	#5	BNT.	47'-2"	
BL1	25	#9	STR.	33'-3" AVG.	11'-8" TO 54'-10"
BL2	2	#9	STR.	11'-6"	
BT1	43	#4	STR.	8'-4" AVG.	6" TO 16'-2"
BT2	12	#4	STR.	17'-2"	
CH1	1	#4	STR.	54'-10"	
CT	111	#4	BNT.	2'-0"	
EP	13	#5	BNT.	5'-5"	
TL1	17	#4	STR.	33'-3" AVG.	11'-8" TO 54'-10"
TL2	2	#4	STR.	11'-6"	
TT1	43	#4	STR.	8'-4" AVG.	6" TO 16'-2"
TT2	12	#4	STR.	17'-2"	

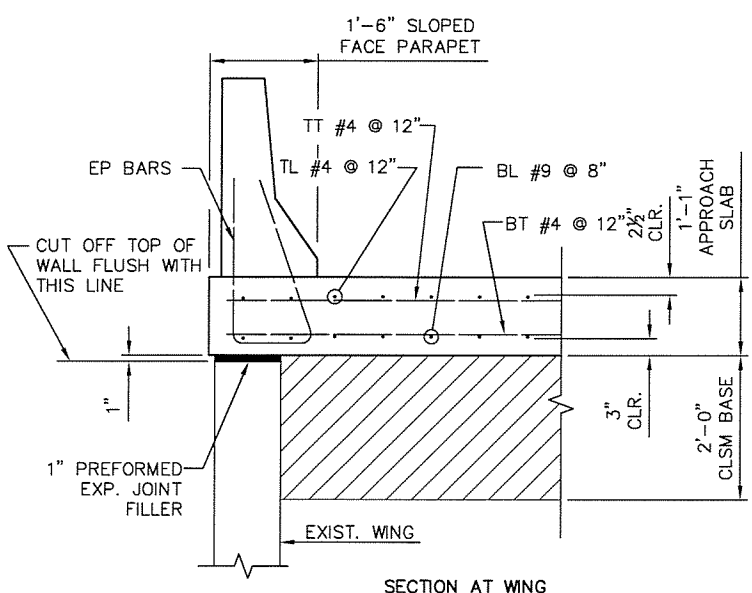
NOTE: FOR EP BAR BENDS, SEE STD. SFPI-2



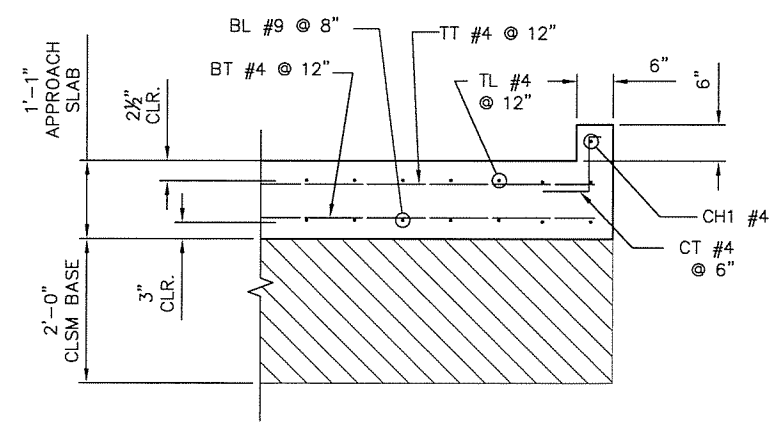
WATER REPELLENT TREATMENT DETAIL



DETAILS OF BENT REINFORCEMENT



SECTION AT WING



CURB SECTION

TYPICAL APPROACH SLAB SECTION

SUMMARY OF QUANTITIES - APPROACH SLAB

ITEM	UNIT	APPROACH SLAB NO. 1	APPROACH SLAB NO. 2	TOTAL
① APPROACH SLAB	SY	70.00	68.00	138.00
SAW CUT GROOVING	SY	60.00	60.00	120.00
CONCRETE PARAPET	LF	57.00	12.00	69.00
WATER REPELLENT (VISUALLY INSPECTED)	SY	23.00	5.00	28.00
CLSM BACKFILL	CY	47.00	45.00	92.00

① THIS QUANTITY INCLUDES ALL COSTS TO CONSTRUCT THE APPROACH SLAB INCLUDING THE COST OF CONCRETE, REINFORCING STEEL, PREFORMED EXPANSION JOINT MATERIAL, LABOR, EQUIPMENT AND OTHER INCIDENTALS TO COMPLETE THE WORK AS SHOWN.

DESIGN	SJN	01/09	BRIDGE A	TULSA COUNTY
DRAWN	SJN	01/09	DETAILS OF APPROACH SLABS (SHEET NO. 2 OF 2)	
CHECKED	SAL	01/09		
APPROVED				
SQUAD	BKJ		STATE JOB PIECE NO. 28880(04)	SHEET NO. 29