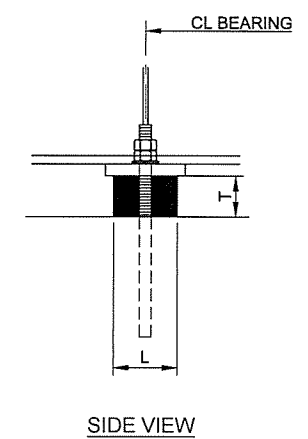
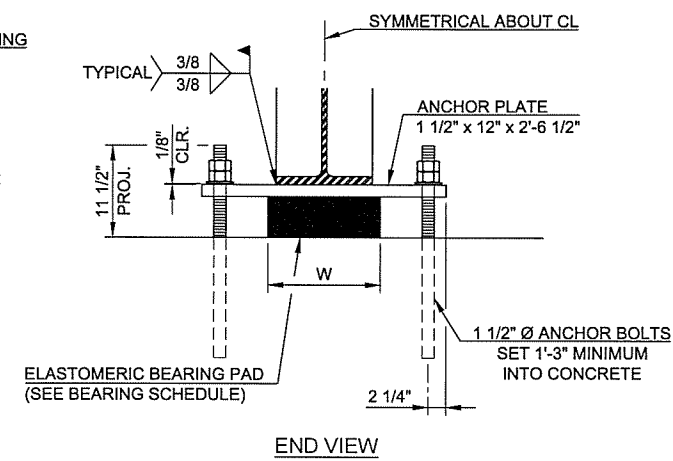
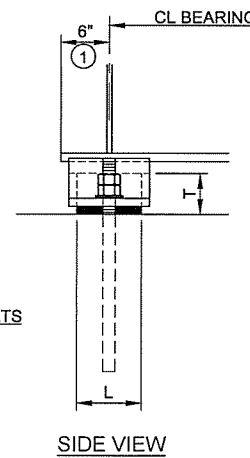
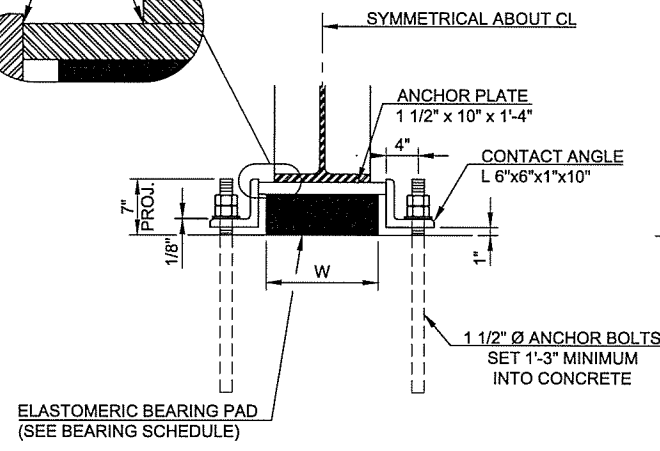
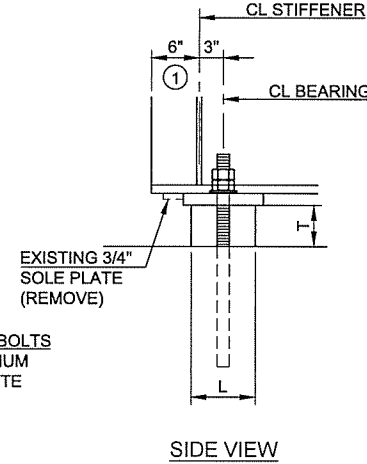
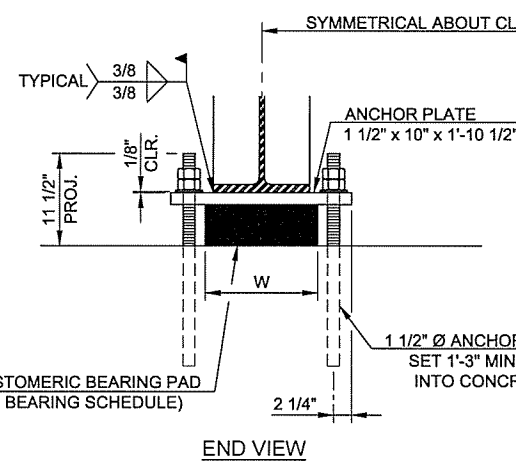
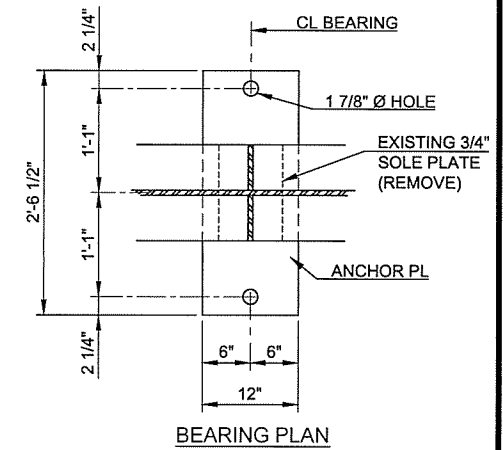
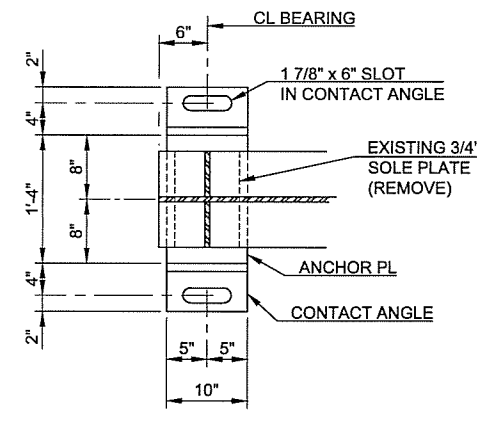
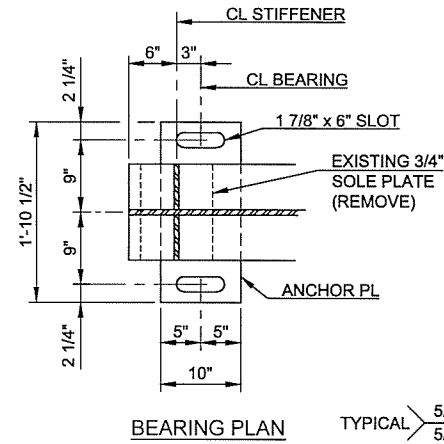


DESCRIPTION	REVISIONS	DATE

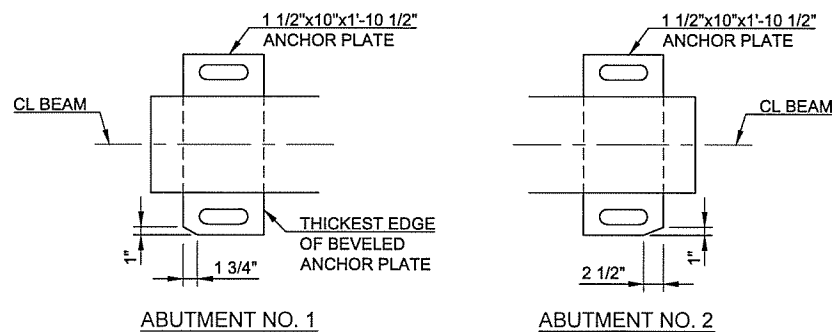
① ANCHOR BOLTS SHALL BE CENTERED IN SLOTS DURING SETTING OF BEAMS. DIMENSION MAY VARY AT EXPANSION BEARING DEPENDING ON TEMPERATURE AT THE TIME OF BEAM SETTING.



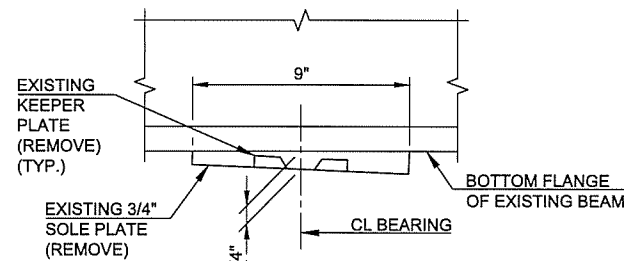
BEARING DETAILS
ABUTMENTS

BEARING DETAILS
PIER NO. 2

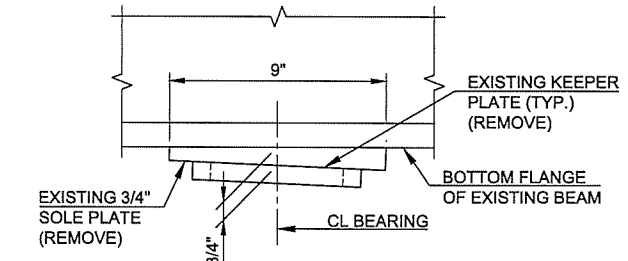
BEARING DETAILS
PIER NO. 1 AND NO. 3



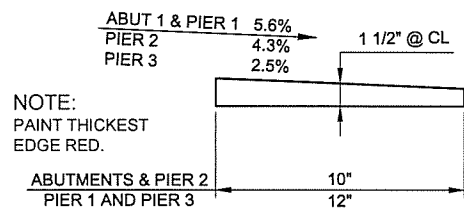
CHAMFER DETAILS



DETAIL OF SOLE PLATE AT PIER 2

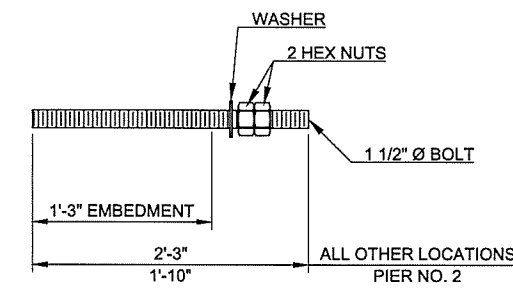


DETAIL OF SOLE PLATE AT PIER 1 AND 3



BEVELED ANCHOR PLATE DETAIL
NO BEVEL REQUIRED AT ABUTMENT 2

BEARING SCHEDULE				
60 DUROMETER ELASTOMERIC PAD				
LOCATION	SIZE (T x L x W)	COVER LAYER	INNER LAYER	LAMINATE PLATE
ABUTMENTS & PIER NO. 2	9 1/8" x 8" x 1'-2"	2 - 1/4"	7 - 3/8"	8 - 1/8"
PIER NO. 1 & PIER NO. 3	4 1/8" x 10" x 1'-8"	2 - 1/4"	7 3/8"	8 1/8"



ANCHOR BOLT DETAIL

DESIGN	JSH	1/14	OKLAHOMA DEPARTMENT OF TRANSPORTATION	
DRAWN	MRM	1/14	BRIDGE A	TULSA COUNTY
CHECKED	JWB	3/16		
APPROVED				
SQUAD	TT		STATE JOB NO. 28880(04)	SHEET NO. 26

BEARING DETAILS
(SHEET 1 OF 2)

3/21/2016 11:04:00 AM - M:\TETRA TECH\1399 ODOT\EC 1414\FY14\TASK ORDER 3\CAD\SHSHEETFILES\28 - BEARING DETAILS.1.DWG - MARQUART, MATT