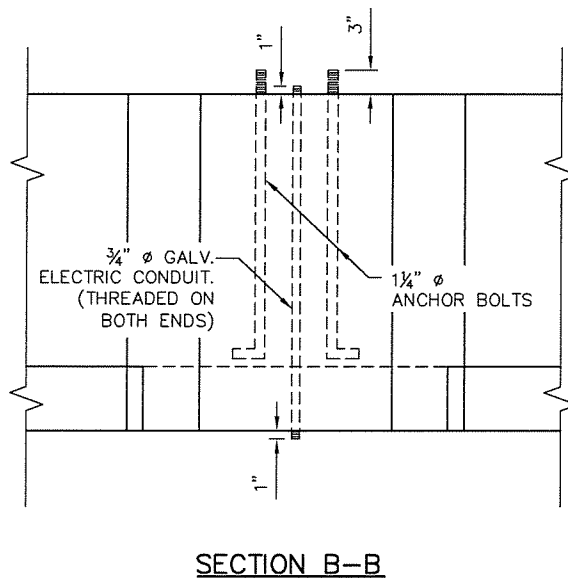
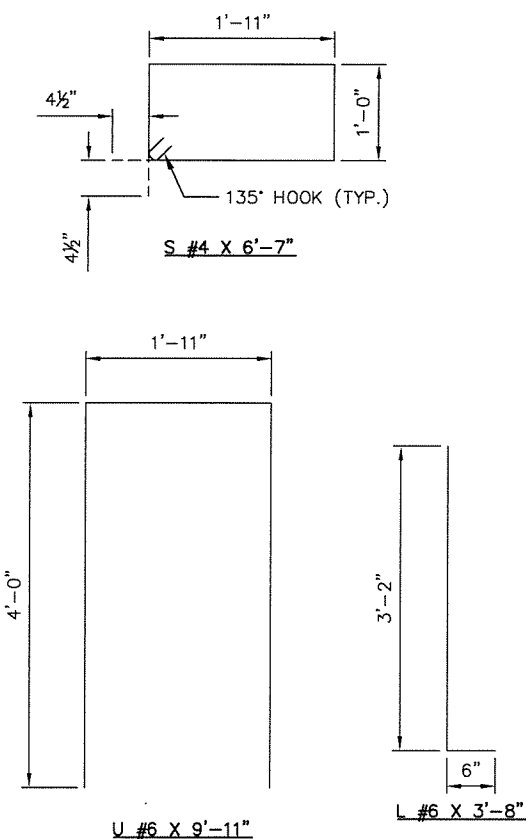
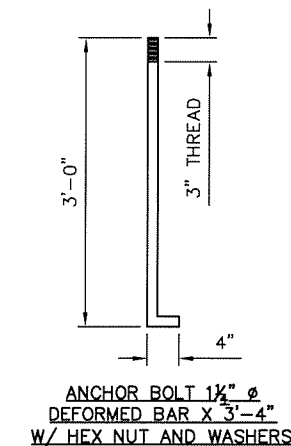
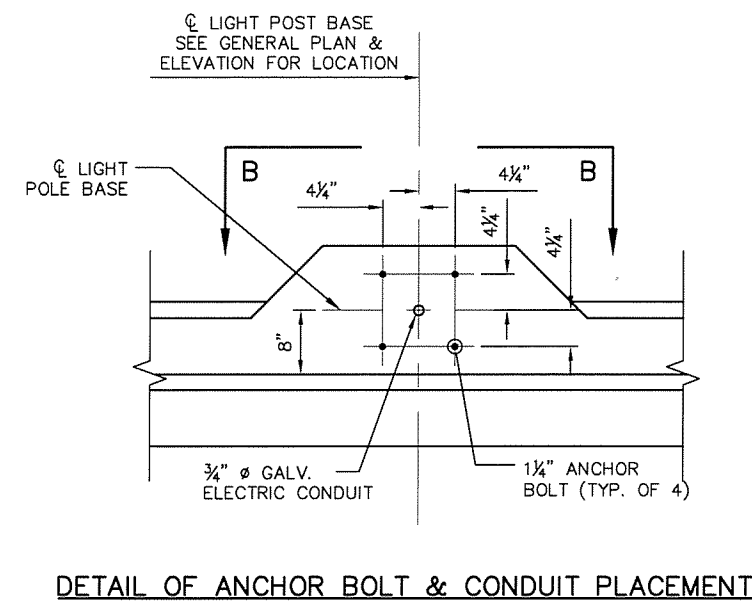
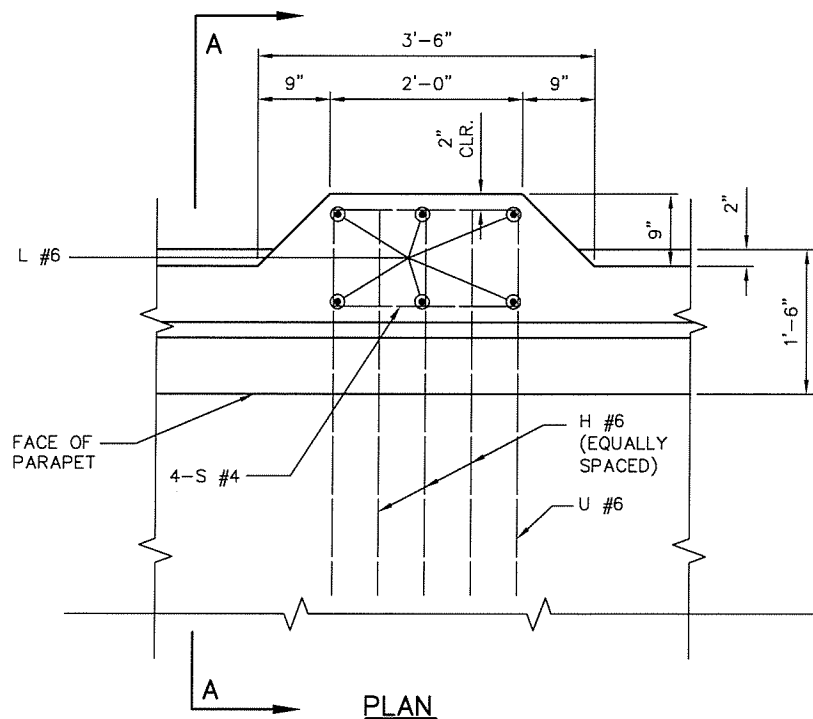
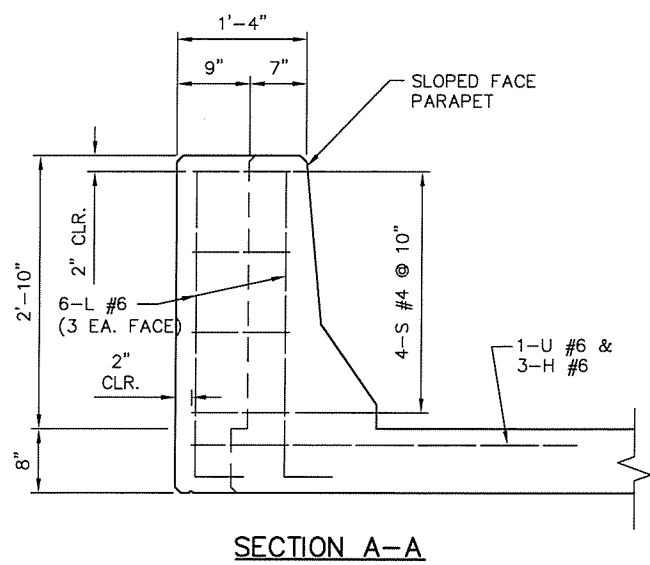


X:\Projects\611-ODOT-IDL North & South Bound Lanes\DWG\Sheets\611-BRIDGE 15A\Sheets\611-SB-SFP-LIGHT SUPPORT01.dwg, 3/25/2016 8:30:51 AM, DEP



**NOTES:**

CONTRACTOR SHALL VERIFY ANCHOR BOLT & CONDUIT CONFIGURATION FOR COMPATIBILITY WITH EXISTING LIGHT POLES AND MAKE ADJUSTMENTS IF REQUIRED.

BAR LIST - ONE LIGHT POLE BASE				
MARK	NO.	SIZE	FORM	LENGTH
EPOXY COATED				
H	3	#6	STR.	4'-0"
L	6	#6	BNT	3'-8"
S	4	#4	BNT.	6'-7"
U	1	#6	BNT.	9'-11"

DESIGN	SJN	01/09	BRIDGE A	TULSA COUNTY
DRAWN	SJN	01/09	DETAILS OF LIGHT POLE (SLOPED FACE PARAPET)	
CHECKED	SAL	01/09		
APPROVED				
SQUAD	BKJ		STATE JOB PIECE NO. 28880(04)	SHEET NO. 25