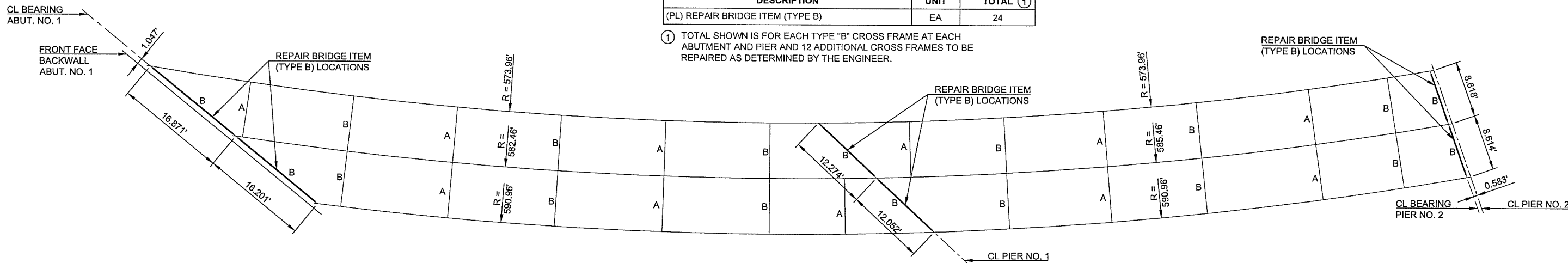


DESCRIPTION	REVISIONS	DATE

REPAIR BRIDGE ITEM (TYPE B) QUANTITIES

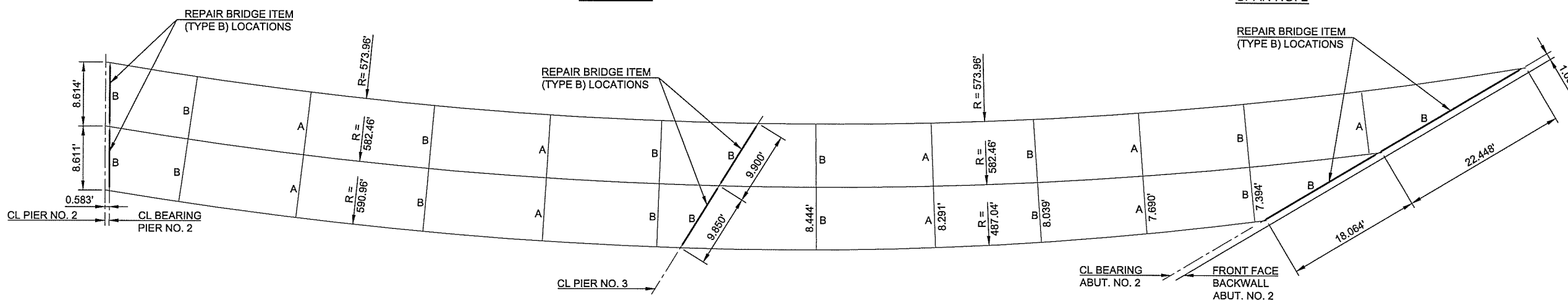
DESCRIPTION	UNIT	TOTAL ①
(PL) REPAIR BRIDGE ITEM (TYPE B)	EA	24

① TOTAL SHOWN IS FOR EACH TYPE "B" CROSS FRAME AT EACH ABUTMENT AND PIER AND 12 ADDITIONAL CROSS FRAMES TO BE REPAIRED AS DETERMINED BY THE ENGINEER.



SPAN NO. 1

SPAN NO. 2



SPAN NO. 3

SPAN NO. 4

GIRDER AND DIAPHRAGM LAYOUT

NOTES:

ALL INFORMATION SHOWN WAS OBTAINED FROM RECORD DRAWINGS. CONTRACTOR SHALL FIELD VERIFY BEFORE STARTING WORK.

METHOD OF DETACHING THE DIAGONALS FROM THE TOP MEMBER WITHOUT DAMAGING THE DIAGONALS SHALL BE SUBMITTED FOR APPROVAL TO THE ENGINEER. ANY DIAGONALS DAMAGED DURING DETACHING FROM TOP MEMBER SHALL BE REPLACED AT NO ADDITIONAL COSTS UNLESS APPROVED BY THE ENGINEER. DIAGONALS SHALL BE WELDED TO THE NEW TOP MEMBER AS SHOWN.

STRUCTURAL STEEL REPLACEMENTS:

REPLACEMENT STRUCTURAL STEEL SHALL CONFORM TO AASHTO M270 (ASTM A709), GRADE 50.

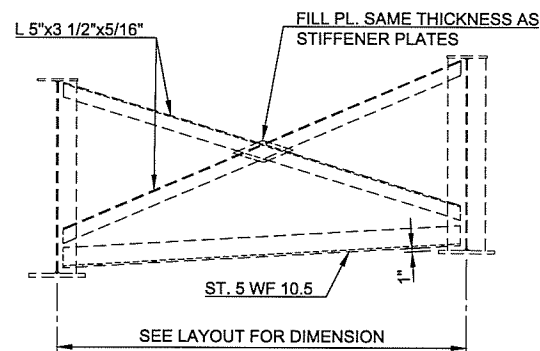
WELDING TO EXISTING STRUCTURES:

ALL WELDS MUST BE MADE TO SOUND STEEL. ADJUST WELD LOCATIONS AND EXTENTS OF NEW STRUCTURAL STEEL IF SOUND STEEL IS NOT FOUND AT LOCATIONS SHOWN IN THE PLANS. ALL WELDING SHALL BE IN ACCORDANCE WITH SECTION 724.03 OF THE SPECIFICATIONS.

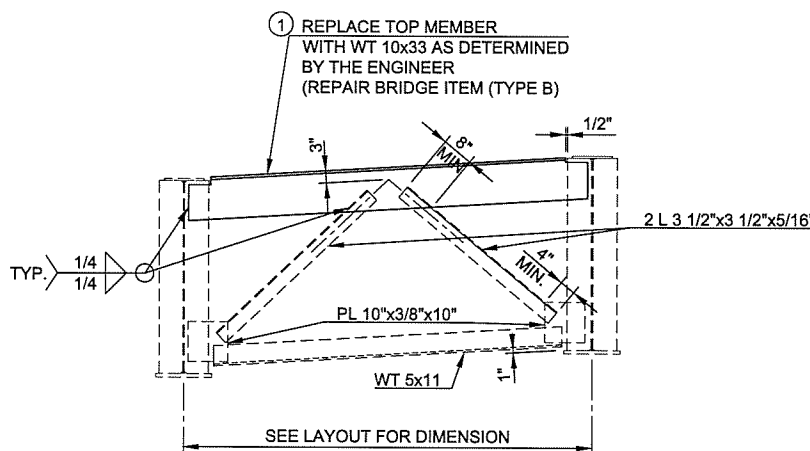
ALL FIELD WELDS ARE TO BE INSPECTED BY THE ODOT MATERIALS DIVISION OR THEIR REPRESENTATIVE AND SHALL BE IN ACCORDANCE WITH THE CURRENT ANSII/AASHTO/AWS D1.5 BRIDGE WELDING CODE. CONTACT THE ODOT MATERIALS DIVISION AT (405) 522-4999 AT LEAST 72 HOURS PRIOR TO THE ANTICIPATED COMPLETION OF FIELD WELDS.

DETERIORATED EXISTING STRUCTURAL STEEL

NOTIFY THE ENGINEER OF ANY DETERIORATED STRUCTURAL STEEL DURING OPERATIONS. THE ENGINEER IN TURN WILL NOTIFY THE BRIDGE ENGINEER TO THE EXTENT OF THE DAMAGE. THE BRIDGE ENGINEER SHALL THEN DETERMINE IF ANY REPAIRS ARE NECESSARY, AND IF SO, WHAT METHOD OF REPAIR SHALL BE USED.



TYPE "A" CROSS FRAME
(SHOWN FOR INFORMATION ONLY)



TYPE "B" CROSS FRAME
(SHOWN WITH REPAIR BRIDGE ITEM (TYPE B))

DESIGN	JSH	4/14	OKLAHOMA DEPARTMENT OF TRANSPORTATION	
DRAWN	MRM	4/14	BRIDGE A	TULSA COUNTY
CHECKED	JWB	3/16	REPAIR BRIDGE ITEM (TYPE B) DETAILS	
APPROVED				
SQUAD	TT		STATE JOB NO. 28880(04)	SHEET NO. 23

3/21/2016 1:02:00 AM - MATETRA TECH111989 ODOT16C 14147TASK ORDER 3\CAD\SSHEETS\FILES\23 - REPAIR BRIDGE ITEM.DWG - MARQUART, MATT