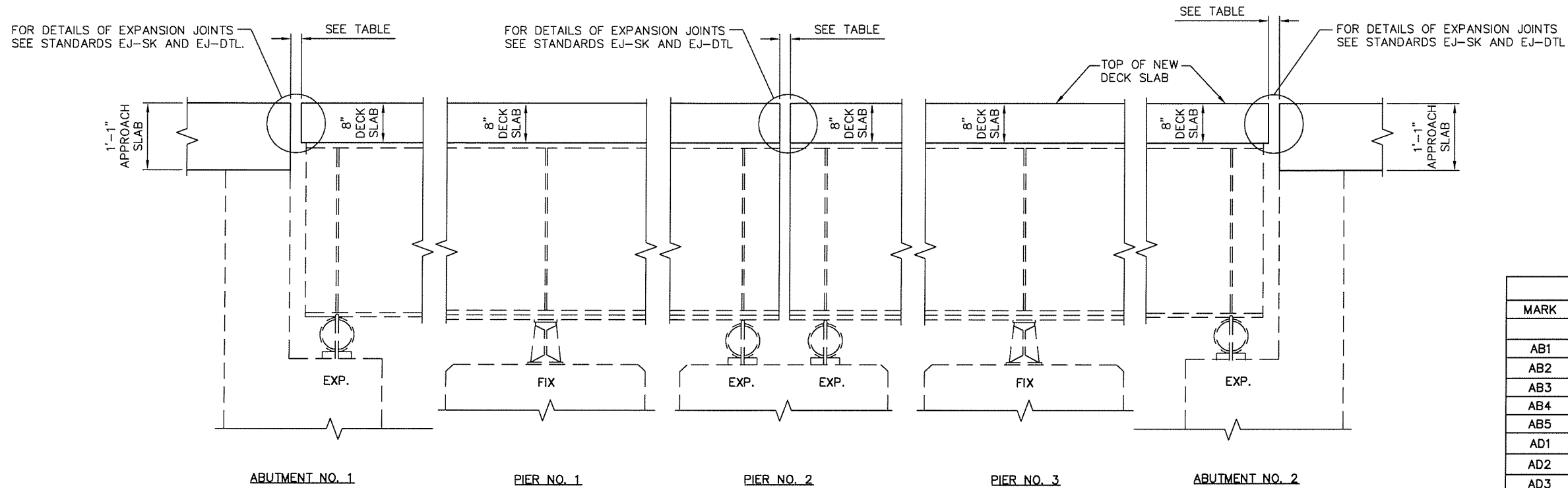
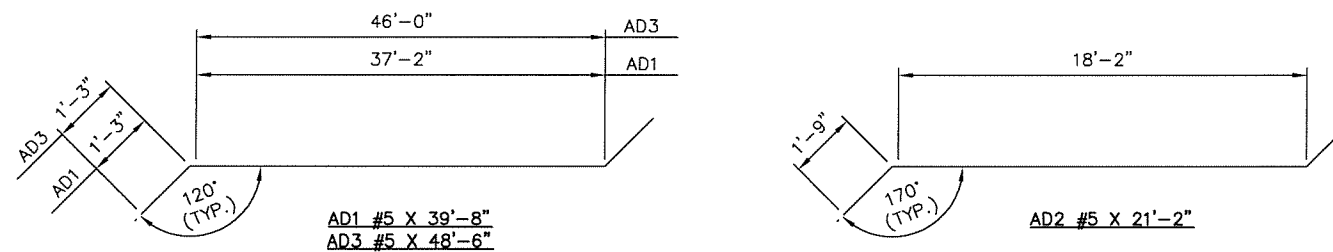


X:\Projects\6111-ODOT-IDL North & South Bound Lanes\DWG\Sheets\611-SB-BR15A-SS02.dwg, 3/25/2016 8:23:25 AM, DEP



LONGITUDINAL SECTION AT ABUTMENTS AND PIERS

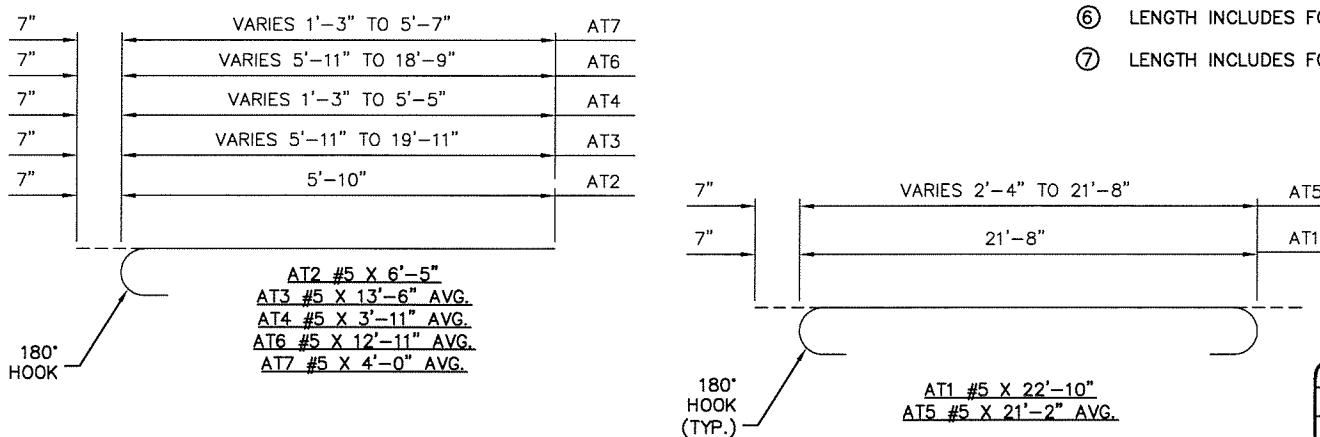
DO NOT TIE WITHIN 6" OF ALL CONSTRUCTION JOINTS.



EXPANSION JOINT OPENING ABUTMENT NO. 1	
JOINT OPENING	AMBIENT AIR TEMP (°F)
1 1/2"	120
1 5/8"	106
1 3/4"	91
1 7/8"	75
2"	60
2 1/8"	45
2 1/4"	29
2 3/8"	14
2 1/2"	0

EXPANSION JOINT OPENING PIER NO. 2	
JOINT OPENING	AMBIENT AIR TEMP (°F)
1 1/8"	120
1 1/4"	112
1 3/8"	104
1 1/2"	95
1 5/8"	86
1 3/4"	77
1 7/8"	69
2"	60
2 1/8"	51
2 1/4"	43
2 3/8"	34
2 1/2"	25
2 5/8"	16
2 3/4"	8
2 7/8"	0

EXPANSION JOINT OPENING ABUTMENT NO. 2	
JOINT OPENING	AMBIENT AIR TEMP (°F)
1 1/2"	120
1 5/8"	105
1 3/4"	90
1 7/8"	75
2"	60
2 1/8"	45
2 1/4"	30
2 3/8"	15
2 1/2"	0



BAR LIST-SUPERSTRUCTURE					
MARK	NO.	SIZE	FORM	LENGTH	LENGTH VARIATION
EPOXY COATED					
AB1	355	#5	STR.	21'-8"	
AB2	61	#5	STR.	10'-7" AVG.	1'-3" TO 19'-11"
AB3	154	#5	STR.	21'-8"	
AB4	158	#5	STR.	21'-1" AVG.	20'-6" TO 21'-8"
AB5	81	#5	STR.	10'-0" AVG.	1'-2" TO 18'-10"
AD1	2	#5	BNT.	39'-8"	
AD2	4	#5	BNT.	21'-2"	
AD3	2	#5	BNT.	48'-6"	
AT1	509	#5	BNT.	22'-10"	
AT2	1438	#5	BNT.	6'-5"	
AT3	46	#5	BNT.	13'-6" AVG.	6'-6" TO 20'-6"
① AT4	32	#5	BNT.	4'-0" AVG.	1'-10" TO 6'-2"
AT5	158	#5	BNT.	22'-4" AVG.	21'-9" TO 22'-10"
AT6	59	#5	BNT.	12'-11" AVG.	6'-6" TO 19'-4"
② AT7	46	#5	BNT.	4'-0" AVG.	1'-10" TO 6'-2"
③ EB1	28	#5	STR.	198'-2" AVG.	187'-2" TO 209'-2"
④ EB2	28	#5	STR.	185'-10" AVG.	166'-4" TO 205'-4"
⑤ EP	719	#5	BNT.	5'-5"	
⑥ ET1	23	#4	STR.	196'-2" AVG.	185'-2" TO 207'-2"
ET2	21	#6	STR.	50'-0"	
⑦ ET3	23	#4	STR.	183'-10"	164'-4" TO 203'-4"
ET4	21	#6	STR.	50'-0"	
⑧ L	24	#4	BNT.	1'-4"	

- ① INCLUDES 2 SETS OF 16 BARS
- ② INCLUDES 2 SETS OF 23 BARS
- ③ LENGTH INCLUDES FOUR 2'-6" LAP SPLICES (LAP SPLICES SHALL BE STAGGERED)
- ④ LENGTH INCLUDES FOUR 2'-6" LAP SPLICES (LAP SPLICES SHALL BE STAGGERED)
- ⑤ FOR BAR BENDS SEE STD. SFP1-2
- ⑥ LENGTH INCLUDES FOUR 2'-0" LAP SPLICES (LAP SPLICES SHALL BE STAGGERED)
- ⑦ LENGTH INCLUDES FOUR 2'-0" LAP SPLICES (LAP SPLICES SHALL BE STAGGERED)

DESIGN	SJN	01/09	BRIDGE A	TULSA COUNTY
DRAWN	LCH	01/09	DETAILS OF SUPERSTRUCTURE (SHEET NO. 2 OF 5)	
CHECKED	SAL	01/09		
APPROVED				
SQUAD	BKJ		STATE JOB PIECE NO. 28880(04)	SHEET NO. 19

DETAILS OF BENT REINFORCEMENT