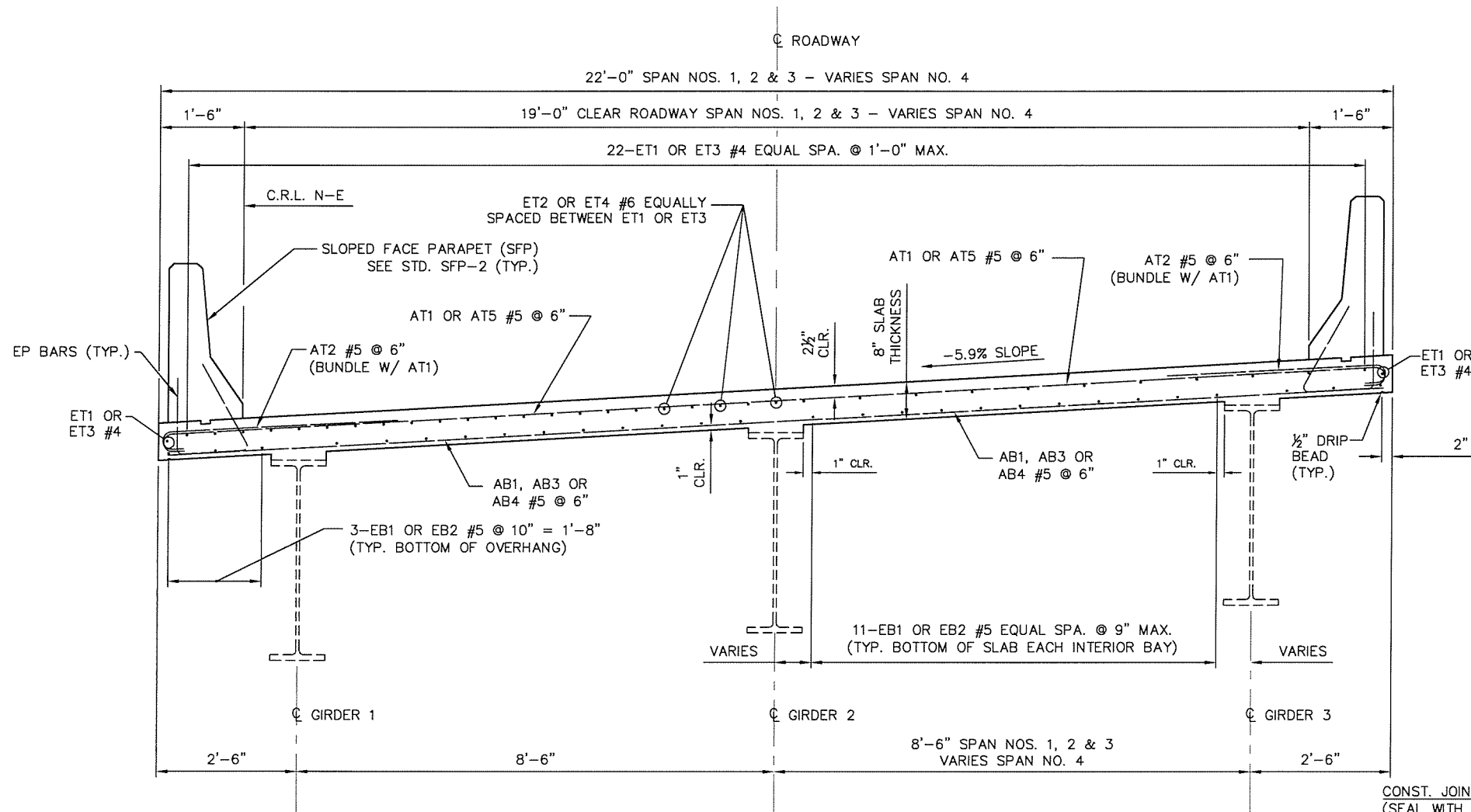


X:\Projects\611-ODOT-IDL\_North & South Bound Lanes\DWG\Sheets\611-SB-BR15A-SS01.dwg, 3/25/2016 8:20:54 AM, DEP

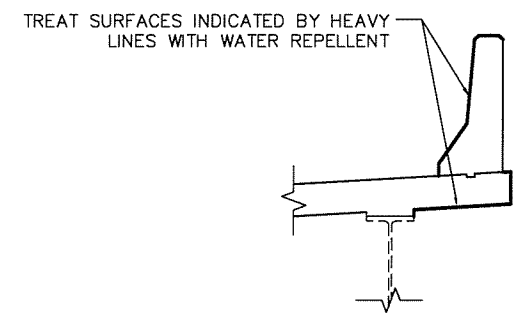


HALF SECTION NEAR PIER NOS. 1 & 3

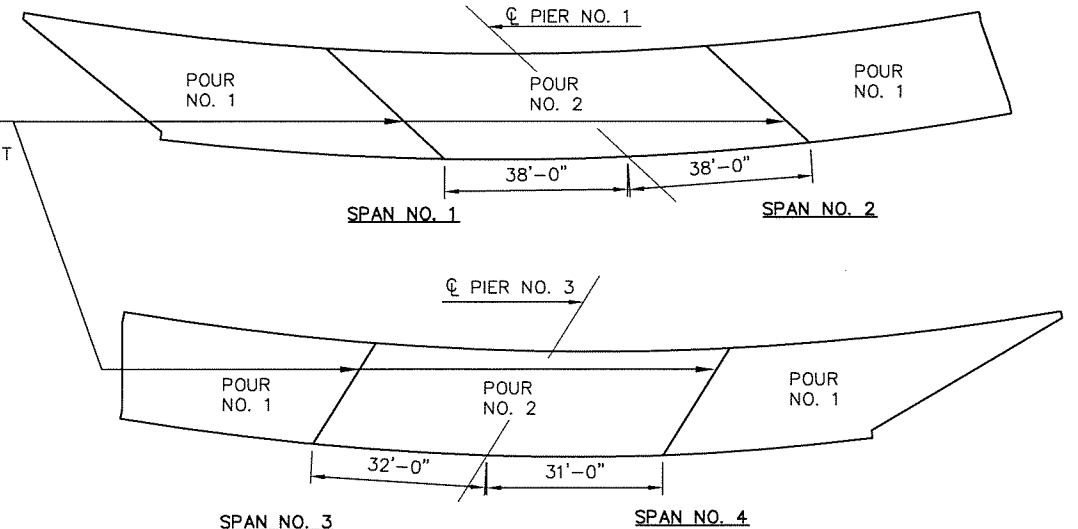
HALF SECTION NEAR MIDSPAN

TYPICAL SECTION

ROTATE HOOKS ON BARS TO MAINTAIN MINIMUM CLEARANCE

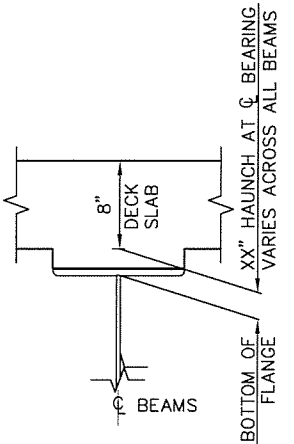


WATER REPELLENT TREATMENT DETAILS



LONGITUDINAL DECK SLAB POURING SEQUENCE

THE POURING OF THE DECK SLAB CONCRETE SHALL BE IN THE SEQUENCE INDICATED. ALL POURS WITH THE SAME NUMBER MAY BE Poured IN ANY SEQUENCE, BUT ALL POURS WITH THE SAME NUMBER SHALL BE COMPLETED BEFORE BEGINNING THE NEXT NUMBERED POUR. THERE SHALL BE A LAPSE OF AT LEAST 48 HOURS BETWEEN NUMBERED POURS. IN THE EVENT OF AN EMERGENCY SITUATION, A KEYED CONSTRUCTION JOINT SHALL BE MADE PERPENDICULAR TO THE DIRECTION OF TRAFFIC AS DIRECTED BY THE ENGINEER. UNTIL THE SLAB IS IN PLACE ON BOTH SIDES OF THE CONSTRUCTION JOINTS, THE SLAB IS UNSUPPORTED, AND NO HEAVY EQUIPMENT WILL BE PERMITTED ON THE FINISHED SLAB WITHIN 6 FEET OF THE CONSTRUCTION JOINTS.



HAUNCH DETAIL

SUMMARY OF QUANTITIES - SUPERSTRUCTURE		
ITEM	UNIT	TOTAL
SEALED EXPANSION JOINT	LF	111.00
SAW CUT GROOVING	SY	787.00
CONCRETE PARAPET	LF	731.00
CLASS AA CONCRETE	CY	200.00
EPOXY COATED REINFORCING STEEL	LB	68287.00
WATER REPELLENT (VISUALLY INSPECTED)	SY	543.00
SEALER CRACK PREPERATION	LF	114.00
SEALER RESIN	GAL	2.00
(PL) RESET OF LIGHT POLES	EA	2.00

DESIGN	SJN	01/09	BRIDGE A	TULSA COUNTY
DRAWN	LCH	01/09	DETAILS OF SUPERSTRUCTURE (SHEET NO. 1 OF 5)	
CHECKED	SAL	01/09		
APPROVED				
SQUAD	BKD		STATE JOB PIECE NO. 28880(04)	SHEET NO. 18