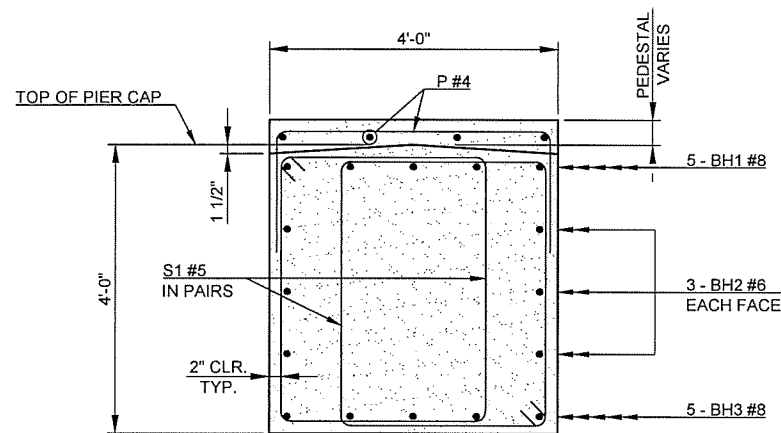
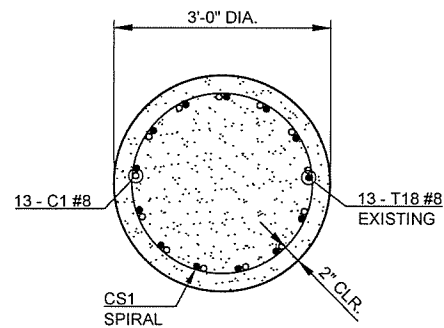


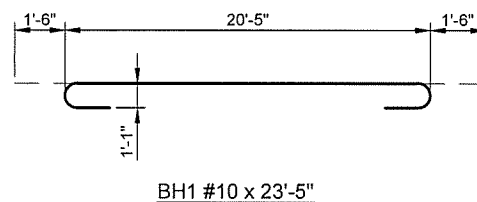
DESCRIPTION	REVISIONS	DATE



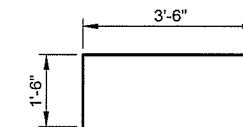
SECTION A-A



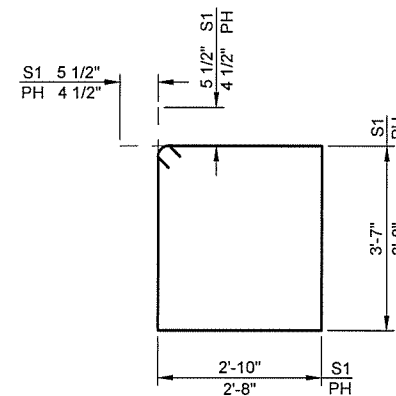
SECTION B-B



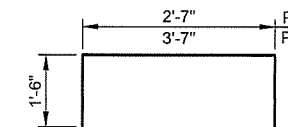
BH1 #10 x 23'-5"



BH4 #6 x 6'-6"

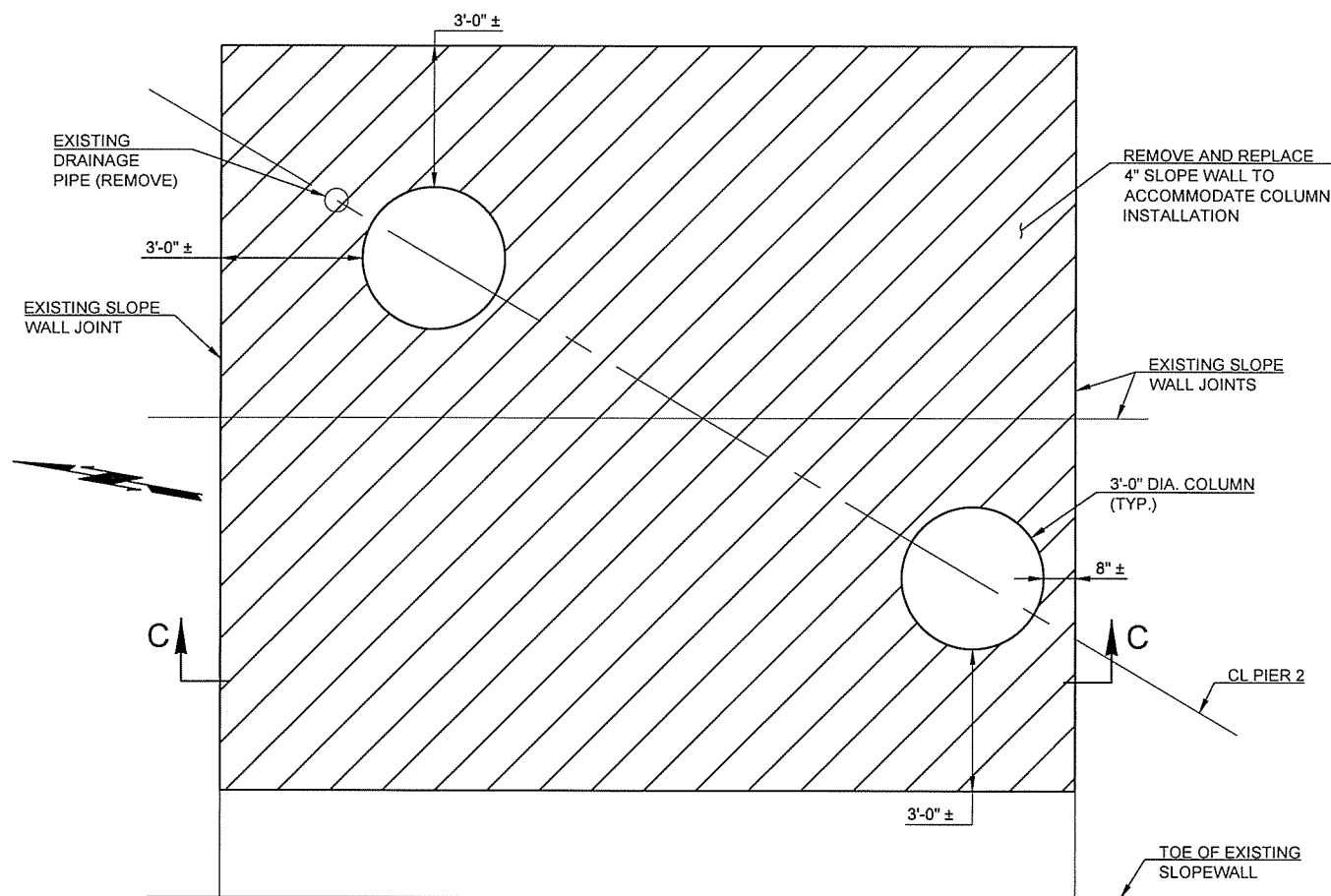


S1 #5 x 13'-9"  
PH #4 x 13'-5"

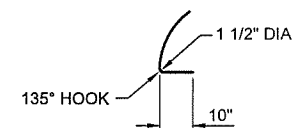


P1 #4 x 5'-7"  
P2 #4 x 6'-7"

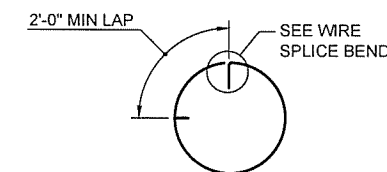
PIER NO. 2 BAR LIST				
MARK	SIZE	NO.	FORM	LENGTH
EPOXY COATED REINFORCING BARS				
BH1	#8	5	BNT.	23'-5"
BH2	#6	6	STR.	20'-5"
BH3	#8	5	STR.	20'-5"
BH4	#6	6	BNT.	6'-6"
S1	#5	38	BNT.	13'-9"
P1	#4	12	BNT.	5'-7"
P2	#4	15	BNT.	6'-7"
PH	#4	2	BNT.	13'-5"
C1	#8	26	STR.	26'-2"
CS1	W-20	2	BNT.	401'-9"



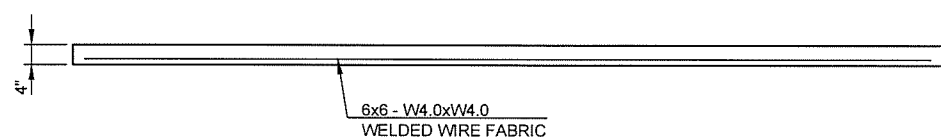
SLOPE WALL REMOVAL PLAN



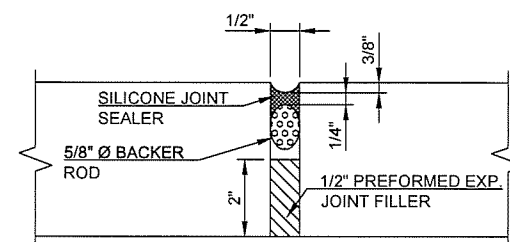
WIRE SPLICE BEND



WIRE SPLICE WHEN REQ'D



SECTION C-C



SILICONE CONSTRUCTION JOINT DETAIL

PIER NO. 2 QUANTITIES		
ITEM	UNIT	TOTAL
SPECIAL CONCRETE FINISH	LSUM	1.0
SILICONE CONSTRUCTION JOINT	LF	90.0
SLOPEWALL (4")	SY	32.0
CLASS A CONCRETE	CY	26.0
EPOXY COATED REINFORCING STEEL	LB	3870.0
WATER REPELLENT (VISUALLY INSPECTED)	SY	110.0

DESIGN	JSH	1/14	OKLAHOMA DEPARTMENT OF TRANSPORTATION BRIDGE A TULSA COUNTY
DRAWN	MRM	1/14	
CHECKED	JWB	3/16	
APPROVED			
SQUAD	TT		
STATE JOB NO. 28880(04)			PIER 2 REPAIR DETAILS (SHEET 2 OF 2)
SHEET NO. 17			

3/21/2016 10:57:59 AM - MATETRA TECH11399 ODOT/EC 1414/TASK ORDER 3/CAD/SHEETFILES/17 - PIER 2.2.DWG - MARQUART, MATT