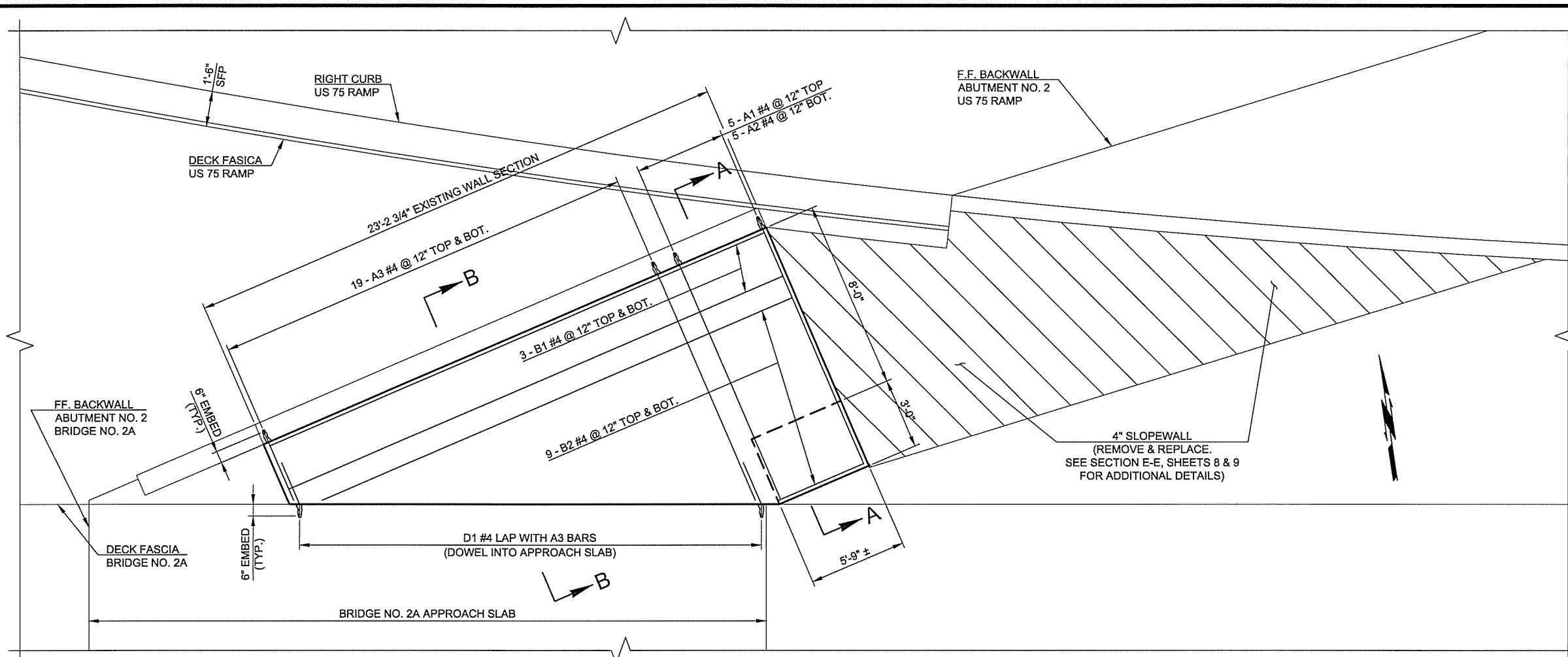


DESCRIPTION	REVISIONS	DATE



ABUTMENT NO. 2 WALL REPAIR BAR LIST

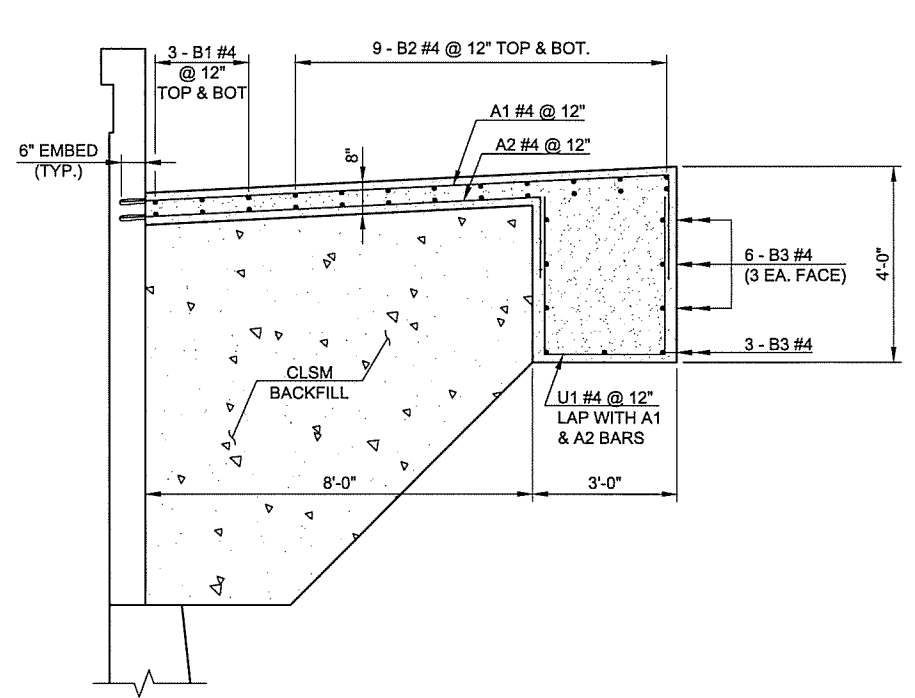
MARK	SIZE	NO.	FORM	LENGTH	LENGTH VARIATION
① A1	#4	5	BNT	13'-6"	
① A2	#4	5	BNT	10'-4"	
① ② A3	#4	38	STR	7'-1" AVG.	3'-2" TO 11'-0"
③ B1	#4	6	STR	22'-10"	
④ B2	#4	18	STR	12'-10" AVG.	3'-11" TO 21'-9"
B3	#4	9	STR	3'-8"	
① ② D1	#4	39	BNT	2'-2"	
U1	#4	5	BNT	9'-2"	

- ① LENGTH SHOWN IS FOR 6" EMBEDMENT. ADJUST AS NECESSARY FOR ANCHORAGE REQUIREMENTS
- ② 2 SETS OF 19
- ③ 2 SETS OF 3
- ④ 2 SETS OF 9

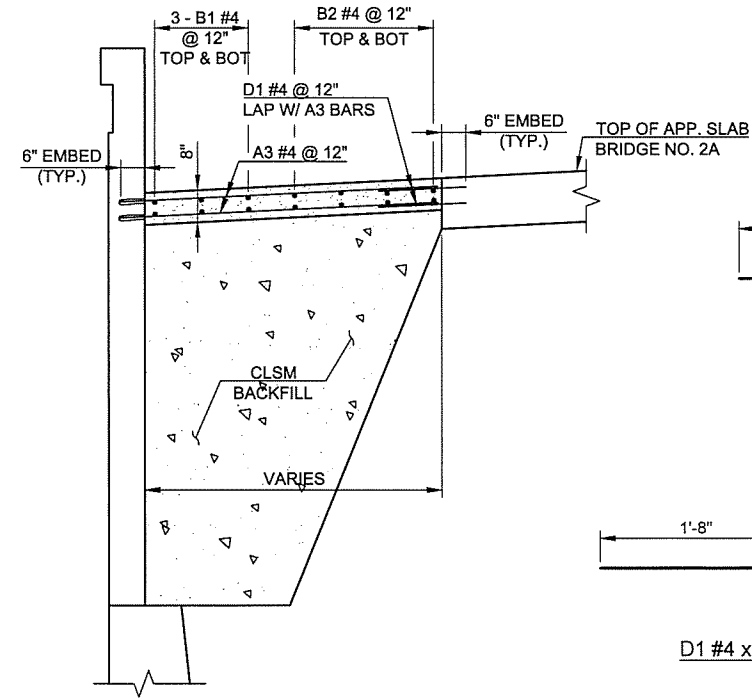
NOTE:
LAP LENGTH SHALL BE 1'-8" MINIMUM ON ALL BARS.

ABUTMENT NO. 2 WALL REPAIR PLAN

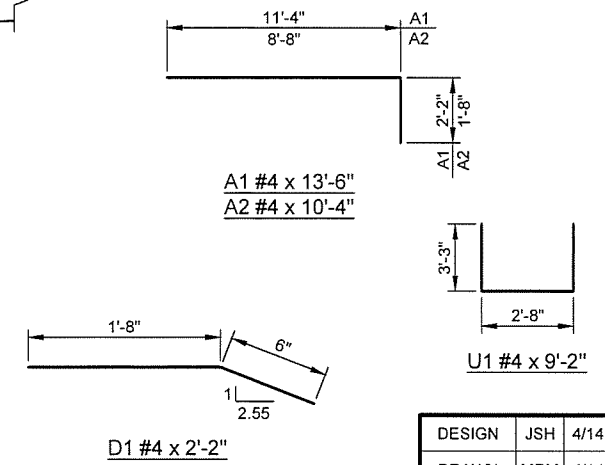
ANCHORAGE SYSTEM:
THE CONTRACTOR SHALL USE AN ANCHORAGE SYSTEM THAT HAS BEEN APPROVED BY ODOT'S MATERIALS DIVISION. FOR EMBEDMENT OF REINFORCING STEEL THE ANCHORAGE SYSTEM SHALL BE CAPABLE OF DEVELOPING THE FULL STRENGTH OF THE REINFORCING STEEL THAT IS TO BE ANCHORED. THE EMBEDMENT DEPTH SHOWN IS TO BE ADJUSTED TO MEET THE REQUIREMENTS. ANCHORAGE SHALL BE INSTALLED IN ACCORDANCE WITH THE MANUFACTURE'S SPECIFICATIONS FOR THE SYSTEM USED.
ALL COSTS OF THE ANCHORAGE SYSTEM INCLUDING LABOR, MATERIALS, TOOLS, DRILLING, AND INCIDENTALS NECESSARY TO COMPLETE THE WORK SHOWN IN THE PLANS SHALL BE INCLUDED IN THE PRICE BID PER POUND OF "EPOXY COATED REINFORCING STEEL".



SECTION A-A



SECTION B-B



DESIGN	JSH	4/14	OKLAHOMA DEPARTMENT OF TRANSPORTATION BRIDGE A TULSA COUNTY
DRAWN	MRM	4/14	
CHECKED	JWB	3/16	
APPROVED			
SQUAD	TT		
STATE JOB NO. 28880(04)			SHEET NO. 13

SUBSTRUCTURE REPAIR DETAIL (SHEET 4 OF 4)

3/21/2016 10:26:16 AM - M:\TETRA TECH\11399 ODOT\13 - REPAIR\BRIDGE\ITEM C.DWG - MARQUART, MAIT