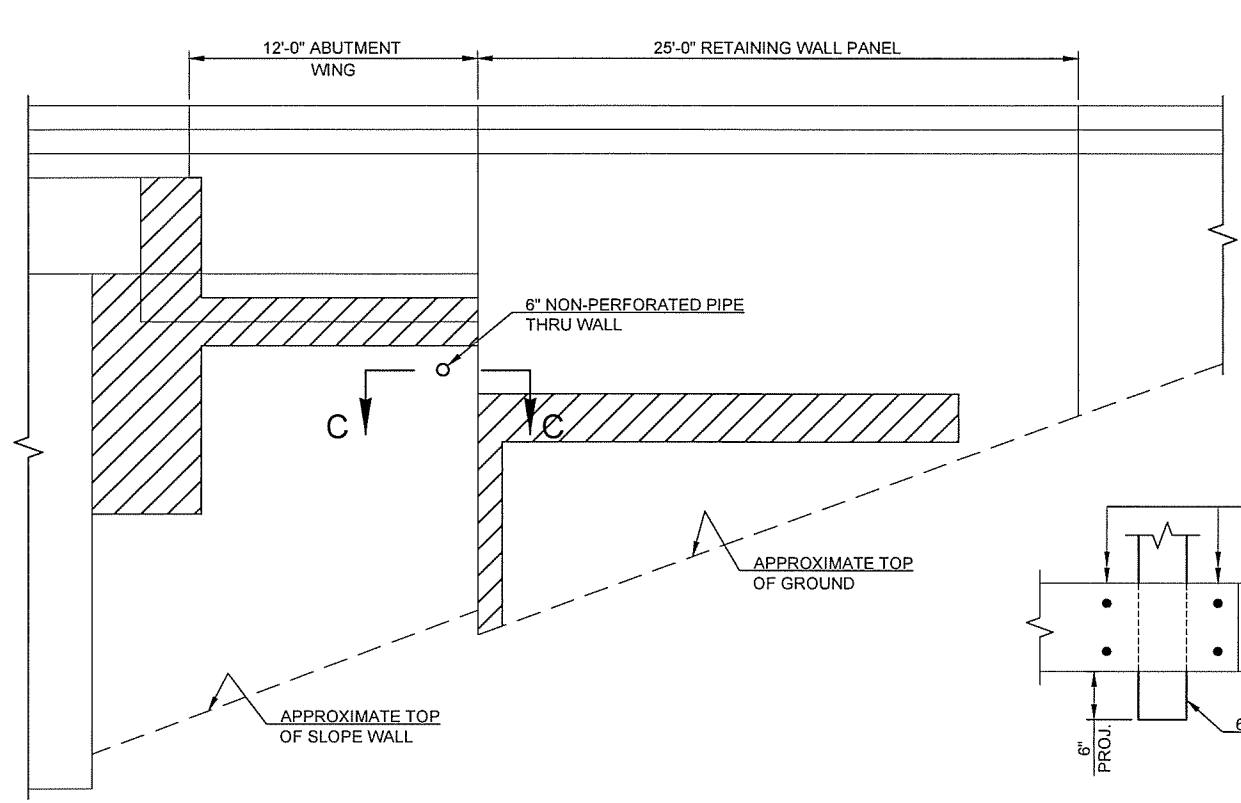
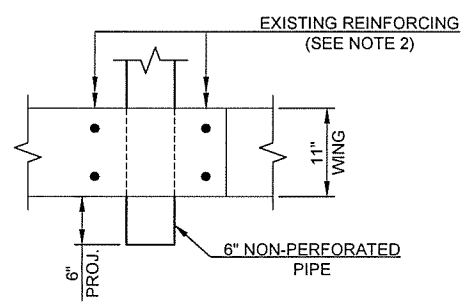


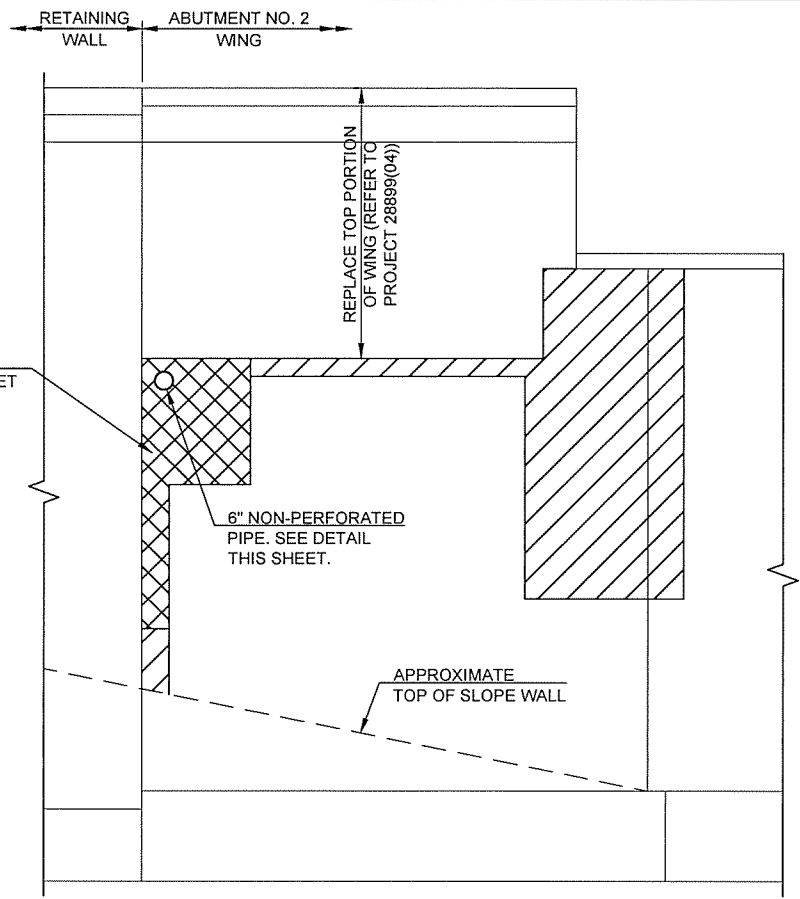
DESCRIPTION	REVISIONS	DATE



**SECTION B-B**  
(ABUTMENT NO. 1, SHEET 10)



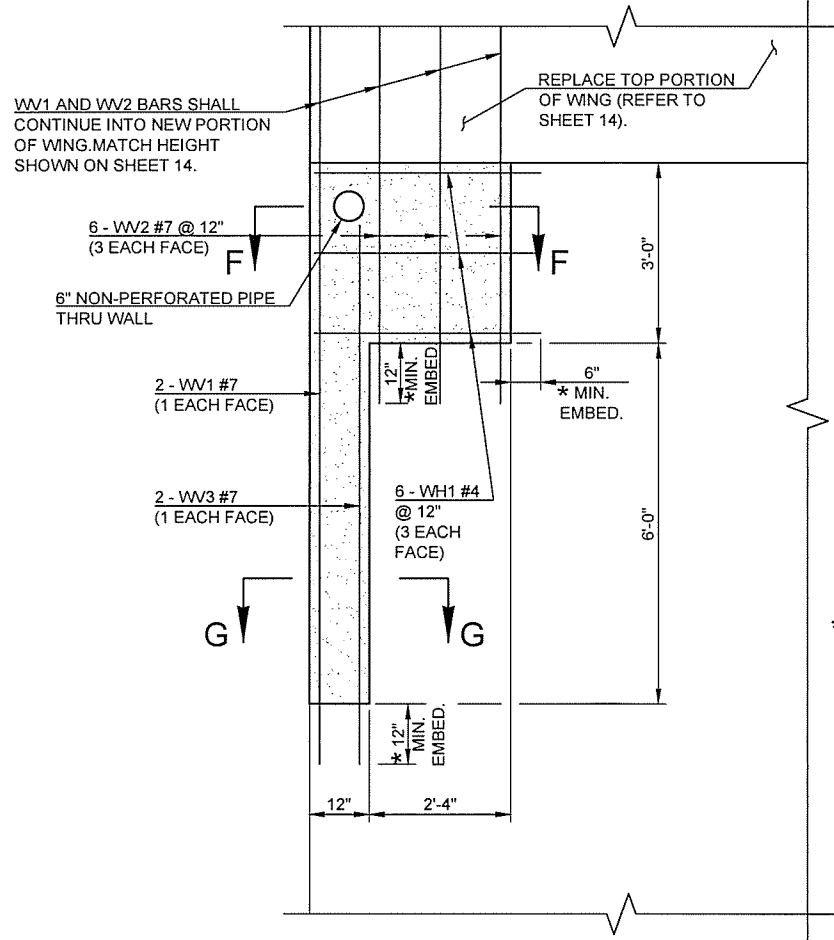
**SECTION C-C**



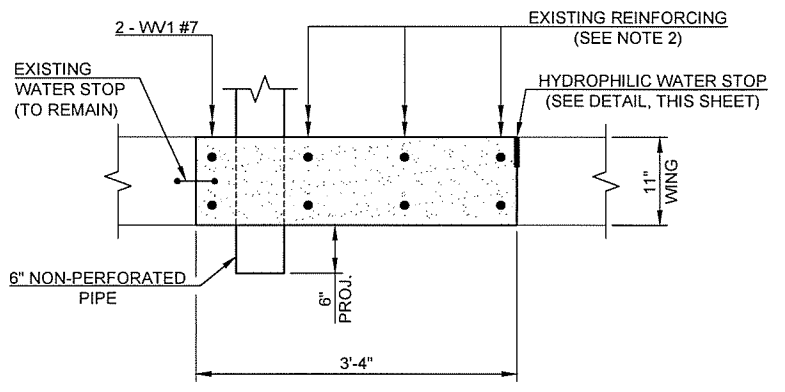
**SECTION D-D**  
(ABUTMENT NO. 2, SHEET 11)

- PNEUMATICALLY PLACED MORTAR
- REPAIR BRIDGE ITEM (TYPE A). SEE DETAIL THIS SHEET.

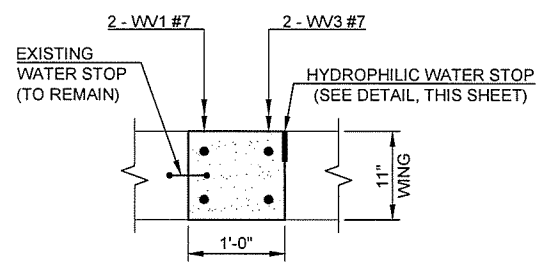
- NOTES:**
- REPAIRS ARE NOT LIMITED TO THE DESIGNATED AREAS SHOWN. THE SPECIFIC REPAIR LOCATIONS, CLASSIFICATION AND EXTENT OF THE REPAIR SHALL BE DETERMINED BY THE ENGINEER.
  - THE CONTRACTOR SHALL TAKE EXTRA CARE WHEN INSTALLING THE 6" NON-PERFORATED PIPE THRU THE EXISTING WING IN ORDER TO PRESERVE THE EXISTING REINFORCING STEEL. DAMAGED REINFORCING STEEL SHALL BE REPLACED AT NO ADDITIONAL COST TO THE PROJECT.
  - REPAIR ITEM (TYPE A) CONSISTS OF REMOVING AND REPLACING THE PORTION OF THE ABUTMENT NO. 2 WING AS SHOWN ON THE PLANS, INCLUDING CLASS 'A' CONCRETE, EPOXY COATED REINFORCING, HYDROPHILIC WATER STOP, BACKER ROD AND JOINT SEALANT.



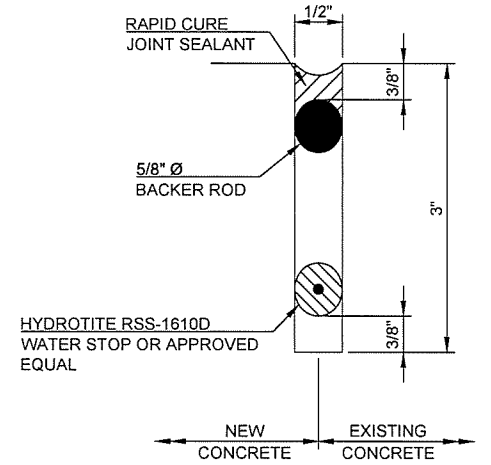
**REPAIR ITEM (TYPE A) ELEVATION**  
(ABUTMENT NO. 2)



**SECTION F-F**



**SECTION G-G**



**HYDROPHILIC WATER STOP DETAIL**

REPAIR TYPE A BAR LIST			
(FOR INFORMATION ONLY)			
(NOT SHOWN IN QUANTITIES)			
MARK	SIZE	NO.	LENGTH
STRAIGHT EPOXY COATED REINFORCING			
① WH1	#4	6	3'-4"
② WV1	#7	2	19'-7"
② WV2	#7	6	25'-7"
③ WV3	#7	2	8'-10"

- LENGTH SHOWN IS FOR 6" EMBEDMENT. ADJUST LENGTH AS NECESSARY FOR ANCHORAGE REQUIREMENTS.
- LENGTH SHOWN IS FOR 12" EMBEDMENT.
- LENGTH SHOWN IS FOR 12" EMBEDMENT. ADJUST LENGTH AS NECESSARY FOR ANCHORAGE REQUIREMENTS.

\* SEE SHEET 11 FOR ANCHORAGE SYSTEM NOTES.

DESIGN	JSH	12/13	OKLAHOMA DEPARTMENT OF TRANSPORTATION	
DRAWN	MRM	12/13	BRIDGE A	TULSA COUNTY
CHECKED	JWB	3/16	SUBSTRUCTURE REPAIR DETAILS (SHEET 3 OF 4)	
APPROVED				
SQUAD	TT		STATE JOB NO. 28889(04)	SHEET NO. 12

3/21/2016 10:20:57 AM - M:\TETRA TECH\11399 ODOT\EC 141\TASK ORDER 3\CADD\SHEETFILES\12 - SUBSTR REPAIR 3.DWG - MARQUART, MATT