

DESCRIPTION	REVISIONS	DATE

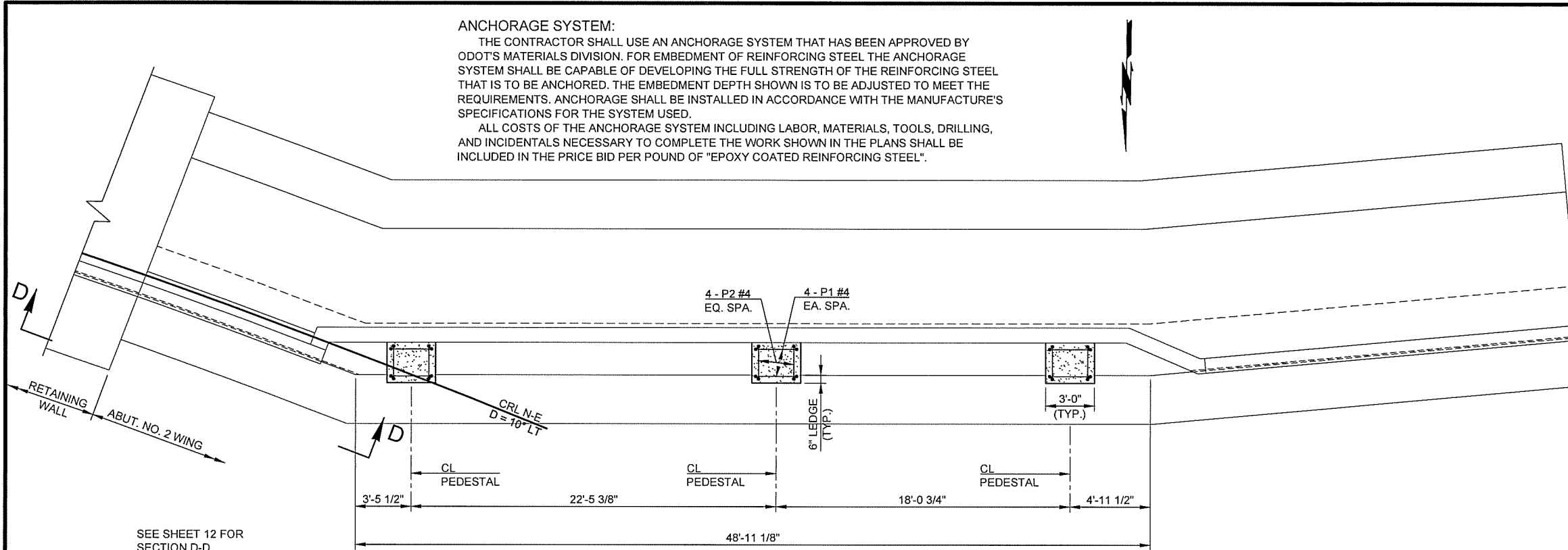
**ANCHORAGE SYSTEM:**

THE CONTRACTOR SHALL USE AN ANCHORAGE SYSTEM THAT HAS BEEN APPROVED BY ODOT'S MATERIALS DIVISION. FOR EMBEDMENT OF REINFORCING STEEL THE ANCHORAGE SYSTEM SHALL BE CAPABLE OF DEVELOPING THE FULL STRENGTH OF THE REINFORCING STEEL THAT IS TO BE ANCHORED. THE EMBEDMENT DEPTH SHOWN IS TO BE ADJUSTED TO MEET THE REQUIREMENTS. ANCHORAGE SHALL BE INSTALLED IN ACCORDANCE WITH THE MANUFACTURE'S SPECIFICATIONS FOR THE SYSTEM USED.

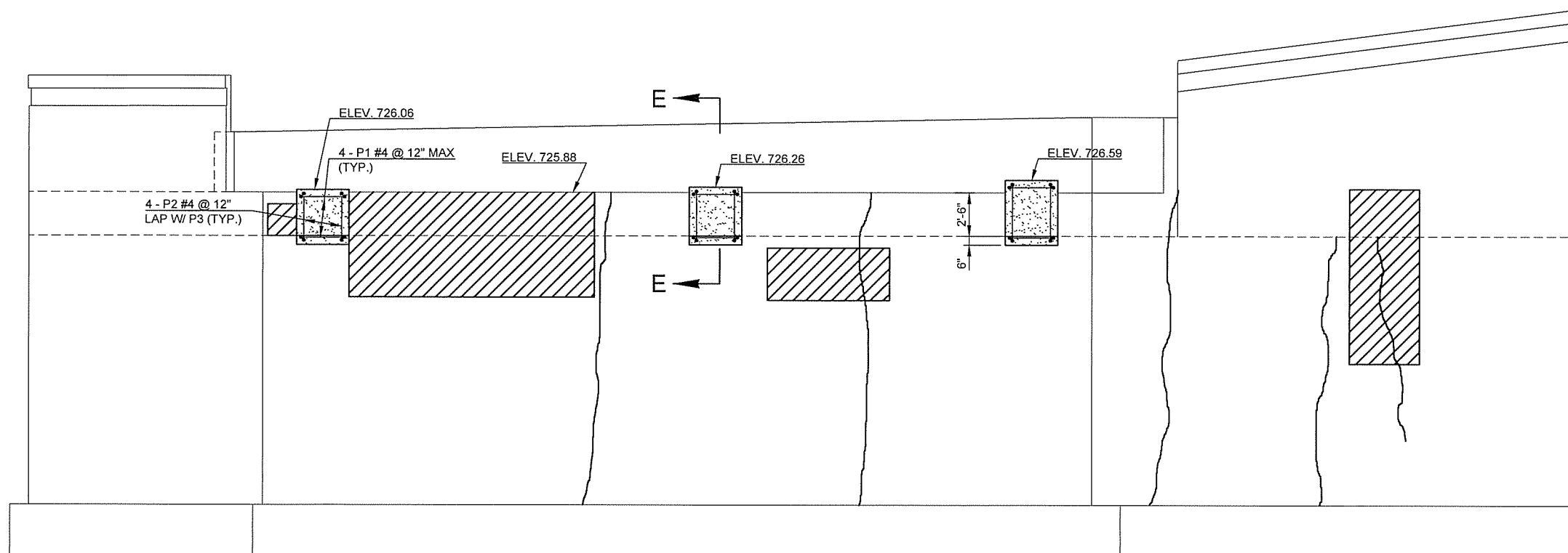
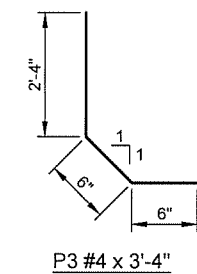
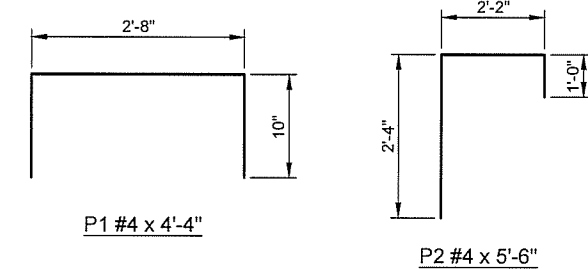
ALL COSTS OF THE ANCHORAGE SYSTEM INCLUDING LABOR, MATERIALS, TOOLS, DRILLING, AND INCIDENTALS NECESSARY TO COMPLETE THE WORK SHOWN IN THE PLANS SHALL BE INCLUDED IN THE PRICE BID PER POUND OF "EPOXY COATED REINFORCING STEEL".

**ABUTMENT NO. 2 BAR LIST**

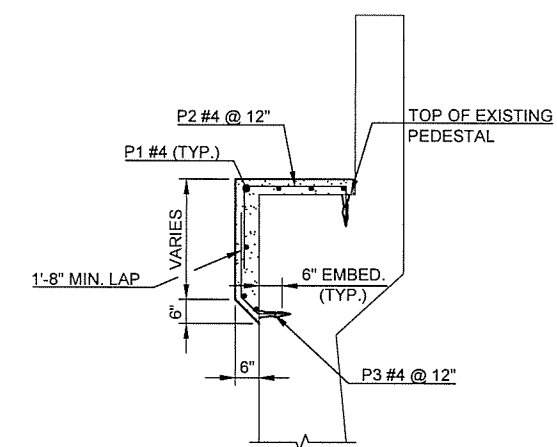
MARK	SIZE	NO.	FORM	LENGTH
EPOXY COATED REINFORCING BARS				
P1	#4	12	BNT	4'-4"
P2	#4	12	BNT	5'-6"
P3	#4	12	BNT	3'-3"



**ABUTMENT NO. 2 PLAN**



**ABUTMENT NO. 2 ELEVATION**



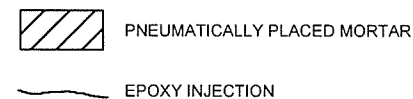
**SECTION E-E**

**NOTES:**

REPAIRS ARE NOT LIMITED TO THE DESIGNATED AREAS AS SHOWN, THE SPECIFIC REPAIR LOCATION, CLASSIFICATION AND EXTENT OF REPAIR SHALL BE DETERMINED BY THE ENGINEER.

EPOXY INJECTION TO BE PAID UNDER ITEMS "PREPARATION OF CRACKS ABOVE WATER" AND "EPOXY RESIN, ABOVE WATER".

A SPECIAL CONCRETE FINISH SHALL BE APPLIED TO THE EXPOSED SURFACES OF THE ABUTMENTS AFTER ALL REPAIRS ARE COMPLETE.



DESIGN	JSH	12/13	OKLAHOMA DEPARTMENT OF TRANSPORTATION BRIDGE A	
DRAWN	MRM	12/13		
CHECKED	JWB	3/16	SUBSTRUCTURE REPAIR DETAILS (SHEET 2 OF 4)	
APPROVED				
SQUAD	TT			
			STATE JOB NO. 28880(04)	SHEET NO. 11

3/21/2016 10:08:14 AM - MATETRA TECH11399 ODOT/EC 1414/TASK ORDER 3/CAD/SHEETFILES/11 - SUBSTR.REPAIR.2.DWG - MARQUART, MATT