

OKLAHOMA DEPARTMENT OF TRANSPORTATION				
FED. ROAD DIST. NO.	STATE	PROJ. NO.	FISCAL YEAR	TOTAL SHEETS
	OKLA.			
DESCRIPTION		REVISIONS	DATE	

FOR DETAILS OF THE NORTHWEST SECTION CORNER OF SECTION 3 SEE THE SOUTHWEST SECTION CORNER OF SECTION 34 ON PAGE 15

FOR DETAILS OF THE NORTH QUARTER CORNER OF SECTION 3 SEE THE SOUTH QUARTER CORNER OF SECTION 34 ON PAGE 15

Southwest Corner Government Lot 2 - O.D.O.T. T-72-1282 - Found and accepted a 1" iron pin along with 2 references, we set 1 additional reference. The 1" iron pin was filed by Michael W. Fisher, RPLS 1563, on October 29th, 2007 along with 3 references. In the corner record of October 29th, 2007 Mr. Fisher notes the O.D.O.T. survey archives SWO 2013(1) survey records from 1955 by Mr. Rees Day Moran, PLS 468. The 1" iron pin was used as found.

FOR DETAILS OF THE NORTHEAST SECTION CORNER OF SECTION 3 SEE THE SOUTHEAST SECTION CORNER OF SECTION 34 ON PAGE 15

Southeast Corner Government Lot 1 - O.D.O.T. T-72-1281 - Found and accepted a 5/8" iron pin with 3 references. The 5/8" iron pin was set by Mr. Bills, RPLS 1135 as referenced by Michael W. Fisher on October 22, 2007. This was referenced in the corner record on October 22, 2007 as well as referencing that this corner location was accurate with O.D.O.T. survey division archives SWO 2013(1) from 1955 by Mr. Rees Day Moran, RPLS 468. The 5/8" iron pin was used as found.

Southeast Corner of Government Lot 1 - O.D.O.T. T-72-1283 - Found all four (4) references as noted in the Certified Corner Reference by Michael W. Fisher, RPLS #1563 on October 18, 2007. Found a good sounding under new pavement that matched all found references for the 5/8" Iron Pin in above said reference. Set a Mag Nail flush with the surface on the Iron Pin.

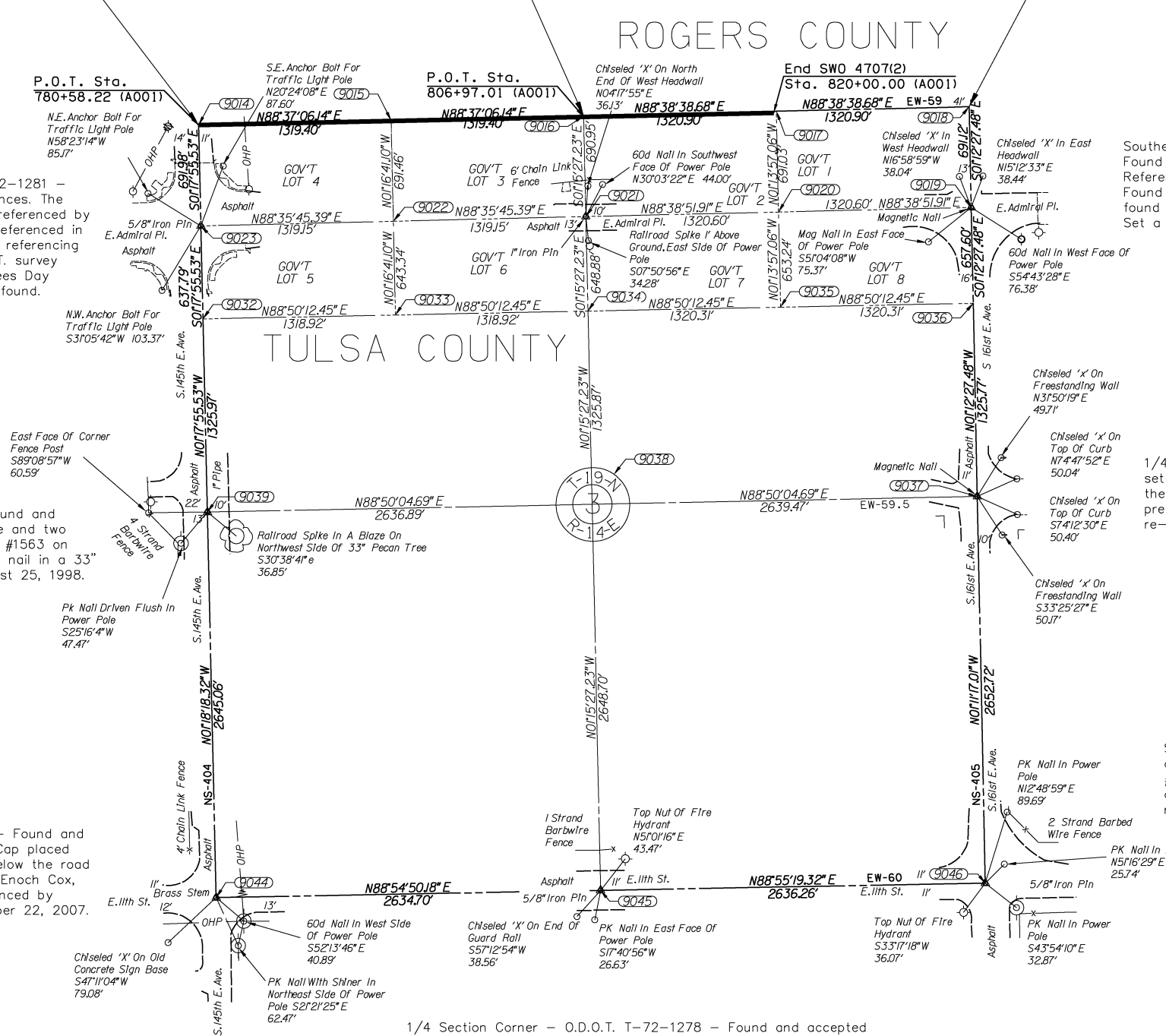
1/4 Section Corner - O.D.O.T. T-72-1280 - Found and accepted a 1" Steel Pipe with O.D.O.T. Cap inside and two references as referenced by Michael Fisher RPLS #1563 on October 18, 2007. Found a third reference, a pk nail in a 33" pecan, as referenced by Dean Robinson on August 25, 1998.

1/4 Section Corner - O.D.O.T. T-72-1276 - Found a mag nail set by Darren M. Smith, RPLS #1552. This mag nail was set using the references from Michael Fisher's RPLS #1563 and others previous corner records with four (4) references (also found) to re-establish the monument.

Section Corner - O.D.O.T. T-72-1279 - Found and accepted a brass stem of a 3" Brass Cap placed over a 6" '+' on a post concrete 8" below the road surface along with 3 references set by Enoch Cox, RPLS #286 on July 13, 1994 and referenced by Michael W. Fisher, RPLS #1563 on October 22, 2007.

Section Corner - O.D.O.T. T-72-1275 - Found and accepted a 5/8" Iron Pin last referenced by Darren M. Smith RPLS #1552 on May 28, 2010 and Michael W. Fisher RPLS #1563 on October 18, 2007. Found all three (3) of Mr. Fisher's references.

1/4 Section Corner - O.D.O.T. T-72-1278 - Found and accepted a 5/8" Iron Pin along with 3 references as referenced by Michael W. Fisher RPLS #1563 on October 22, 2007.



NOTE: REFERENCE'S SHOWN ARE NOT TO SCALE.

PLS	RWA	OKLAHOMA DEPARTMENT OF TRANSPORTATION SURVEY DIVISION
DRAWN	MDA	
CHECKED	AKB	
APPROVED	GAA	
CREW	CHOUTEAU	
SWO 4707 (2) PROJECT NO. 21899(04) SHEET NO. S-17		SURVEY DATA SHEET