

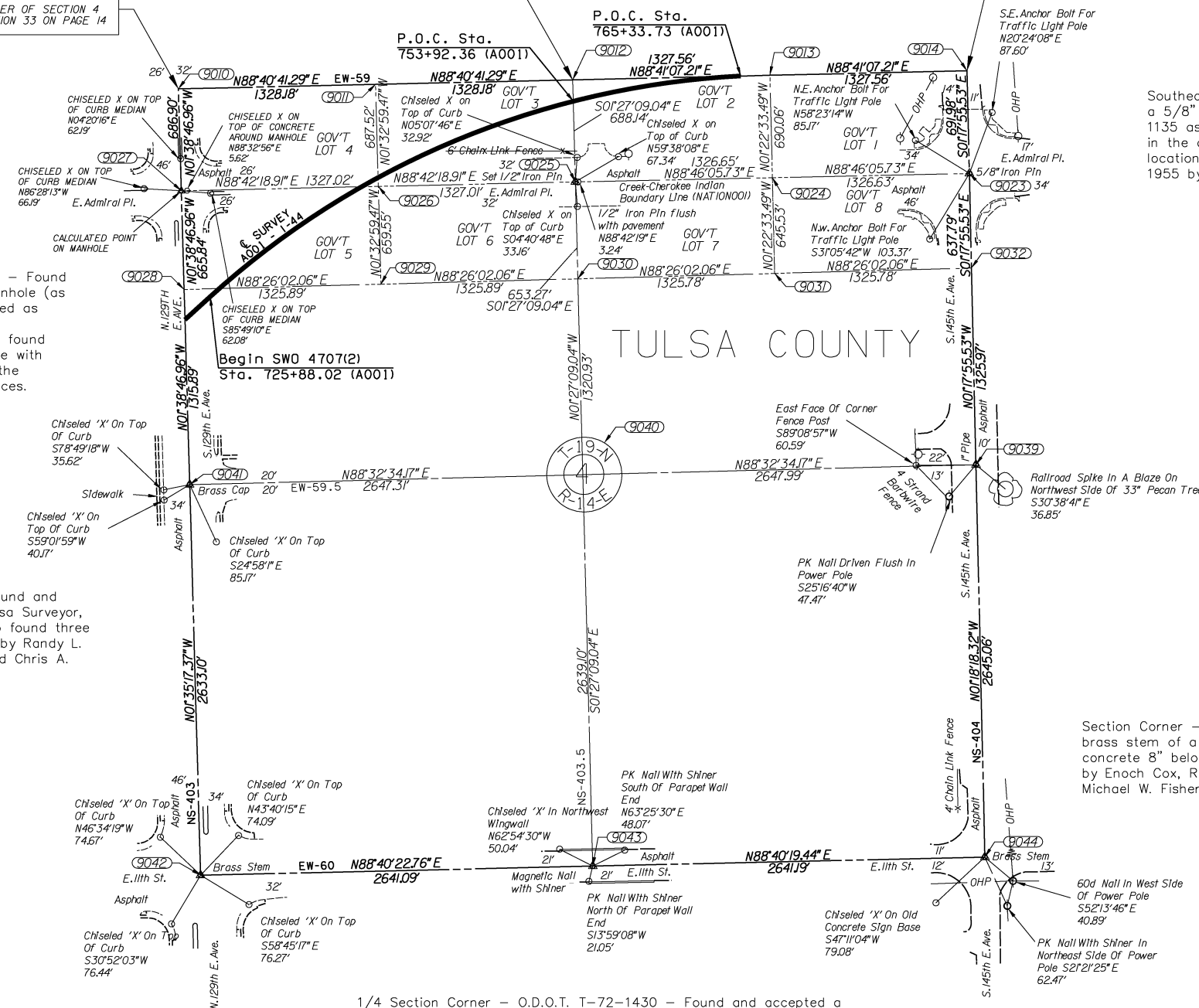
OKLAHOMA DEPARTMENT OF TRANSPORTATION					
FED. ROAD DIST. NO.	STATE	PROJ. NO.	FISCAL YEAR	SHEET NO.	TOTAL SHEETS
	OKLA.				
DESCRIPTION			REVISIONS	DATE	

Southwest Corner Government Lot 2- O.D.O.T. T-72-1427 - Found and rejected 1/2" Iron Pin referenced by Mansur-Daubert-Williams, Inc. Surveyor's #823, May 24, 1979. Set a 1/2" Iron Pin using single proportion method between found section corners. Established three references.

FOR DETAILS OF THE NORTH QUARTER CORNER OF SECTION 4 SEE THE SOUTH QUARTER CORNER OF SECTION 33 ON PAGE 14

FOR DETAILS OF THE NORTHEAST SECTION CORNER OF SECTION 4 SEE THE SOUTHEAST SECTION CORNER OF SECTION 33 ON PAGE 14

FOR DETAILS OF THE NORTHWEST SECTION CORNER OF SECTION 4 SEE THE SOUTHWEST SECTION CORNER OF SECTION 33 ON PAGE 14



Southwest Corner Government Lot 4 - O.D.O.T. T-72-1437 - Found a reference Chiseled "X" on the concrete surrounding a manhole (as shown below) set by unknown persons that was not accepted as the lot corner. Calculated a point that fell in the manhole (coordinates below) using single proportion method between found sections corners. The calculated point also closely fit in-line with found government lot corners to the east and west along the Creek-Cherokee Indian Treaty line. Established three references.

Southeast Corner Government Lot 1- O.D.O.T. T-72-1281 - Found and accepted a 5/8" iron pin with 3 references. The 5/8" iron pin was set by Mr. Bills, RPLS 1135 as referenced by Michael W. Fisher on October 22, 2007. This was referenced in the corner record on October 22, 2007 as well as referencing that this corner location was accurate with O.D.O.T. survey division archives SWO 2013(1) from 1955 by Mr. Rees Day Moran, RPLS 468. The 5/8" iron pin was used as found.

1/4 Section Corner - O.D.O.T. T-72-1280 - Found and accepted a 1" Steel Pipe with O.D.O.T. Cap inside and two references as referenced by Michael Fisher RPLS #1563 on October 18, 2007. Found a third reference, a pk nail in a 33" pecan, as referenced by Dean Robinson on August 25, 1998.

1/4 Section Corner - O.D.O.T. T-72-1428 - Found and accepted a 3" Brass Cap set by the City of Tulsa Surveyor, Enoch Cox RPLS #286, on October 1, 1993. Also found three (3) supporting reference monuments referenced by Randy L. Marquardt RPLS #1432 on February 17, 2005 and Chris A. Cauthon RPLS #1530 on October 23, 2008.

Section Corner - O.D.O.T. T-72-1279 - Found and accepted a brass stem of a 3" Brass Cap placed over a 6" '+' on a post concrete 8" below the road surface along with 3 references set by Enoch Cox, RPLS #286 on July 13, 1994 and referenced by Michael W. Fisher, RPLS #1563 on October 22, 2007.

1/4 Section Corner - O.D.O.T. T-72-1430 - Found and accepted a magnetic nail with shiner along with 3 references set by Tom A. Haynes, RPLS 1052, on January 19th, 2000 using a single proportional measurement method. The corner and references were used and filed again on April 19, 2006 by Kevin A. Steele, RPLS 1586.

Section Corner - O.D.O.T. T-72-1429 - Found and accepted a Brass Stem along with 4 references that match the brass cap with 4 references that were found and referenced by Randy L. Marquardt, RPLS on February 24, 2005. The Brass Stem fits references and appears to have had the cap broken off and was used as found.

NOTE: REFERENCE'S SHOWN ARE NOT TO SCALE.



OKLAHOMA DEPARTMENT OF TRANSPORTATION SURVEY DIVISION			
PLS	RWA		
DRAWN	MDA		
CHECKED	AKB		
APPROVED	GAA		
CREW	CHOUTEAU	SWO 4707 (2)	PROJECT NO. 21899(04) SHEET NO. S-16