

OKLAHOMA DEPARTMENT OF TRANSPORTATION					
FED. ROAD DIST. NO.	STATE	PROJ. NO.	FISCAL YEAR	SHEET NO.	TOTAL SHEETS
	OKLA.				
DESCRIPTION			REVISIONS	DATE	

Section Corner - O.D.O.T. R-66-1073 - Found and accepted a 5/8" Iron Pin with cap "ODOT PLS 1563" in a 1" Pipe along with 4 references filed by several surveyor's, The most recent being referenced by Jeffrey Arthur Tuttle, RPLS #1094 on March 15, 2011 and Michael W. Fisher, RPLS #1563 on October 18, 2007.

1/4 Section Corner - O.D.O.T. R-66-1072 - Found and Accepted a 5/8" Iron Pin originally set by J. Wesley Bills, RPLS #1135 and since referenced by others. Found matching previous references.

Section Corner - O.D.O.T. R-66-1075 - Found and accepted 1 1/4" Iron Pin in asphalt referenced last by Jeffrey Arthur Tuttle, RPLS #1094, Tuttle & Associates, Inc. used in March 18, 2001 and several others previously. Found matching references for the corner monument.

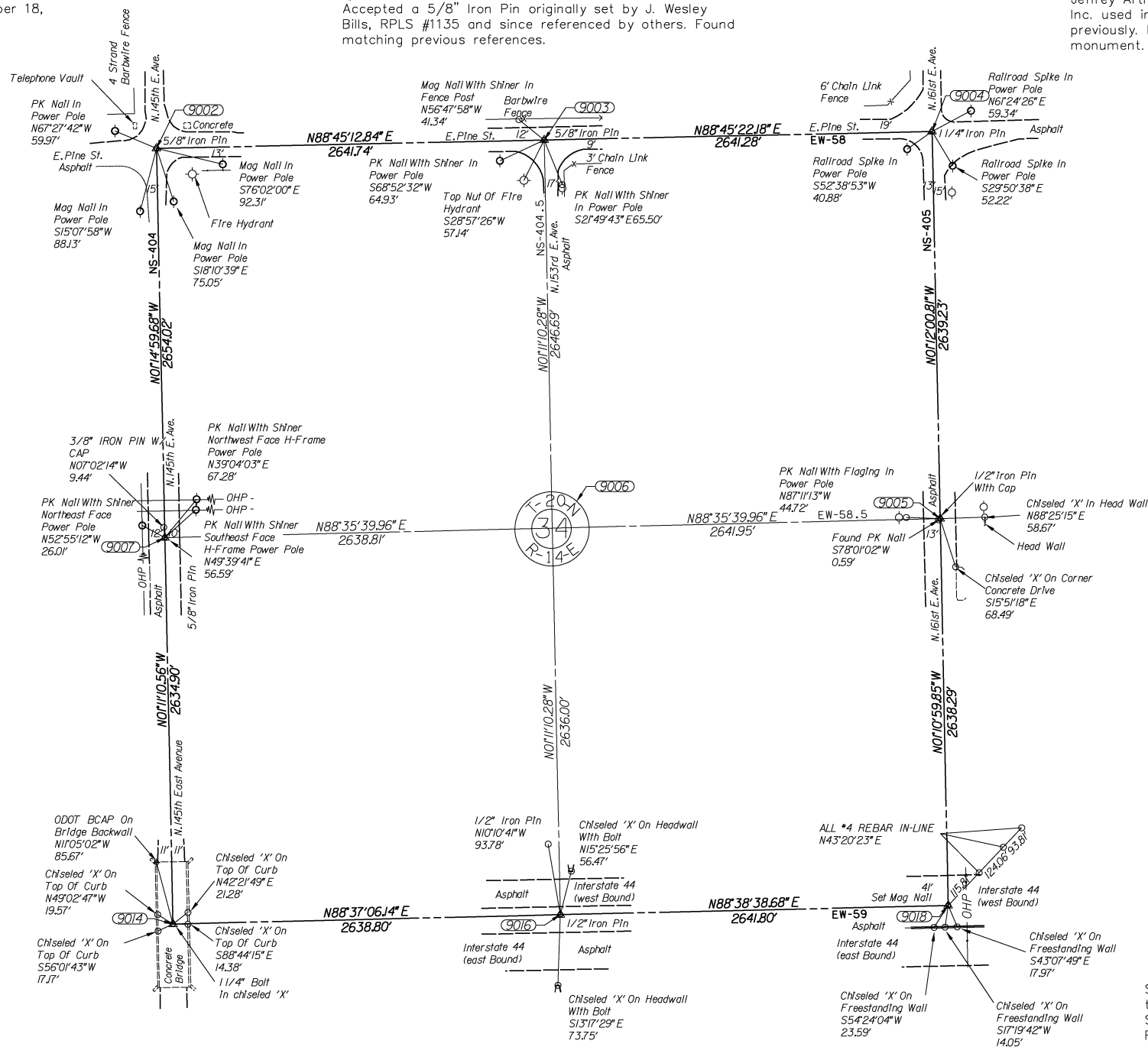
1/4 Section Corner - O.D.O.T. R-66-1071 - Found and accepted a 5/8" Iron Pin set and referenced by Michael W. Fisher, RPLS 1563 on October 22, 2007. Corner references from the SWO 3426(1) survey records performed by Mr. L.E. Higginbotham in 1979 were used to verify this position by Mr. Fisher. Found three (3) of five (5) of Mr. Fisher's references. Found and rejected a 3/8" iron pin with cap as set and referenced by Tom A. Haynes. Mr. Haynes gave no reason why he chose to reject the 5/8" found Iron Pin in favor of a position determined by single proportion measurement.

1/4 Section Corner - O.D.O.T. R-66-1074 - Found 1/2" Iron Pin with cap as referenced by Darren M. Smith RPLS #1552, May 28, 2010. No corner references were found. Established three more references in addition to the found PK nail also referenced by Mr. Smith. Also found and rejected a PK nail just 0.59' west of corner.

Section Corner - O.D.O.T. R-66-1069 - Found and accepted a chiseled 'X' with a 1 1/4" bolt along with five (5) references as referenced last by Michael W. Fisher RPLS #1563 on October 18, 2007. This position was originally filed by Mr. L.E. Higginbotham, RPLS #84 in the SWO 3426(1) Survey records from 1979.

1/4 Section Corner - O.D.O.T. R-66-1070 - Set 1/2" iron pin with plastic cap stamped Bennett CA 4502. This corner was set using 3 references found and accepted that were referenced by Michael W. Fisher RPLS 1563 on October 18, 2007. The 5/8" iron pin set by Mr. Higginbotham in 1979 (SWO 3426) from ties to Mr. Moran's 1955 survey (SWO 2013) as referenced by Mr. Fisher was not found.

Section Corner - O.D.O.T. R-66-1067 - Found the three (3) #4 rebar in-line referenced by Darren M. Smith RPLS #1552 on May 28, 2010 and Michael W. Fisher RPLS #1563 on October 18, 2007. Set mag nail with plastic washer "CA 4502" using found references and set three (3) more references. This position closely fits the single proportional measurement from found section corners.



NOTE: REFERENCE'S SHOWN ARE NOT TO SCALE.



OKLAHOMA DEPARTMENT OF TRANSPORTATION SURVEY DIVISION			
SURVEY DATA SHEET			
PLS	RWA		
DRAWN	MDA		
CHECKED	AKB		
APPROVED	GAA		
CREW	CHOUTEAU	SWO 4707 (2)	PROJECT NO. 21899(04) SHEET NO. S-15