

OKLAHOMA DEPARTMENT OF TRANSPORTATION					
FED. ROAD DIST. NO.	STATE	PROJ. NO.	FISCAL YEAR	SHEET NO.	TOTAL SHEETS
	OKLA.				
DESCRIPTION		REVISIONS		DATE	

Section Corner - O.D.O.T. T-72-1433 - Found and accepted a 5/8" Iron Pin referenced by Randy L. Marquardt RPLS #1432 on February 2nd, 2005 with one matching reference. Set two (2) more references for the corner record.

1/4 Section Corner - O.D.O.T. T-72-1432 - Found and accepted a 3/8" Iron Pin as referenced by Tom A. Haynes RPLS #1052 on August 9, 2001. Found three (3) references to the said 3/8" Iron Pin set by Cline L. Mansur RPLS #241 circa November 26, 2001.

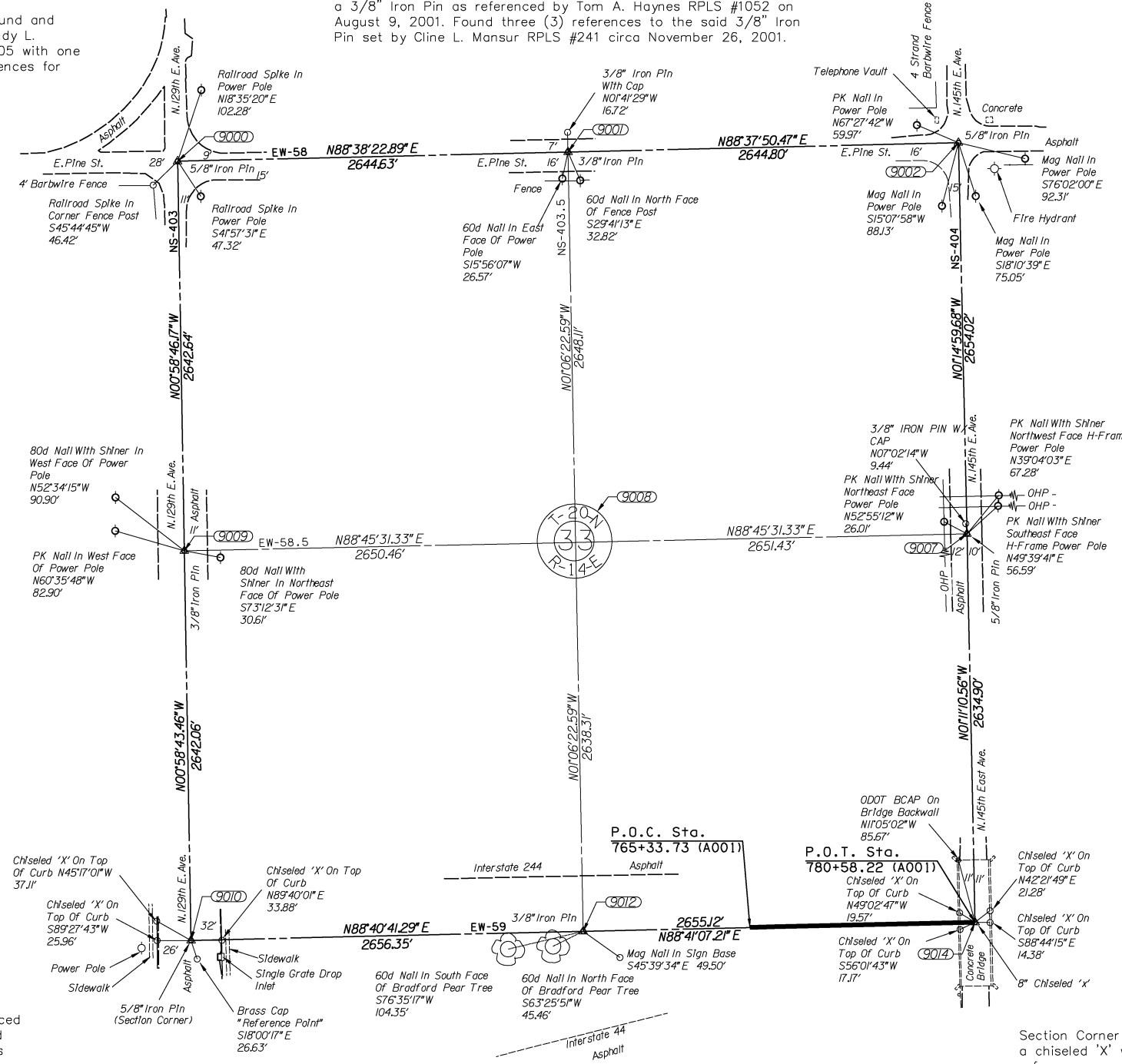
Section Corner - O.D.O.T. R-66-1073 - Found and accepted a 5/8" Iron Pin with cap "ODOT PLS 1563" in a 1" Pipe along with 4 references filed by several surveyor's, The most recent being referenced by Jeffrey Arthur Tuttle, RPLS #1094 on March 15, 2011 and Michael W. Fisher, RPLS #1563 on October 18, 2007.

1/4 Section Corner - O.D.O.T. T-72-1435 - Found and accepted a 3/8" Iron Pin with cap "White RPLS 1052" last referenced by Randy L. Marquardt RPLS #1432 on February 3, 2005 and found several matching references set by others.

1/4 Section Corner - O.D.O.T. R-66-1071 - Found and accepted a 5/8" Iron Pin set and referenced by Michael W. Fisher, RPLS 1563 on October 22, 2007. Corner references from the SWO 3426(1) survey records performed by Mr. L.E. Higginbotham in 1979 were used to verify this position by Mr. Fisher. Found three (3) of five (5) of Mr. Fisher's references. Found and rejected a 3/8" iron pin with cap as set and referenced by Tom A. Haynes. Mr. Haynes gave no reason why he chose to reject the 5/8" found Iron Pin in favor of a position determined by single proportion measurement.

Section Corner - O.D.O.T. T-72-1431 - Found and accepted a 5/8" Iron Pin originally set and referenced by J. Wesley Bills RPLS #1135 on July 22, 1997 and referenced by several others. Found several previous corner references from previous corner records.

1/4 Section Corner - O.D.O.T. T-72-1434 - Found and accepted a 3/8" Iron Pin with cap stamped "White RPLS 1052" set and reference by Tom A. Haynes RPLS #1052 on August 9th, 2001. Found one matching reference and set two (2) more.



SCALE: 1" = 500'

NOTE: REFERENCE'S SHOWN ARE NOT TO SCALE.

OKLAHOMA DEPARTMENT OF TRANSPORTATION SURVEY DIVISION			
PLS	RWA		
DRAWN	MDA		
CHECKED	AKB		
APPROVED	GAA		
CREW	CHOUTEAU	SWO 4707 (2)	PROJECT NO. 21899(04) SHEET NO. S-14