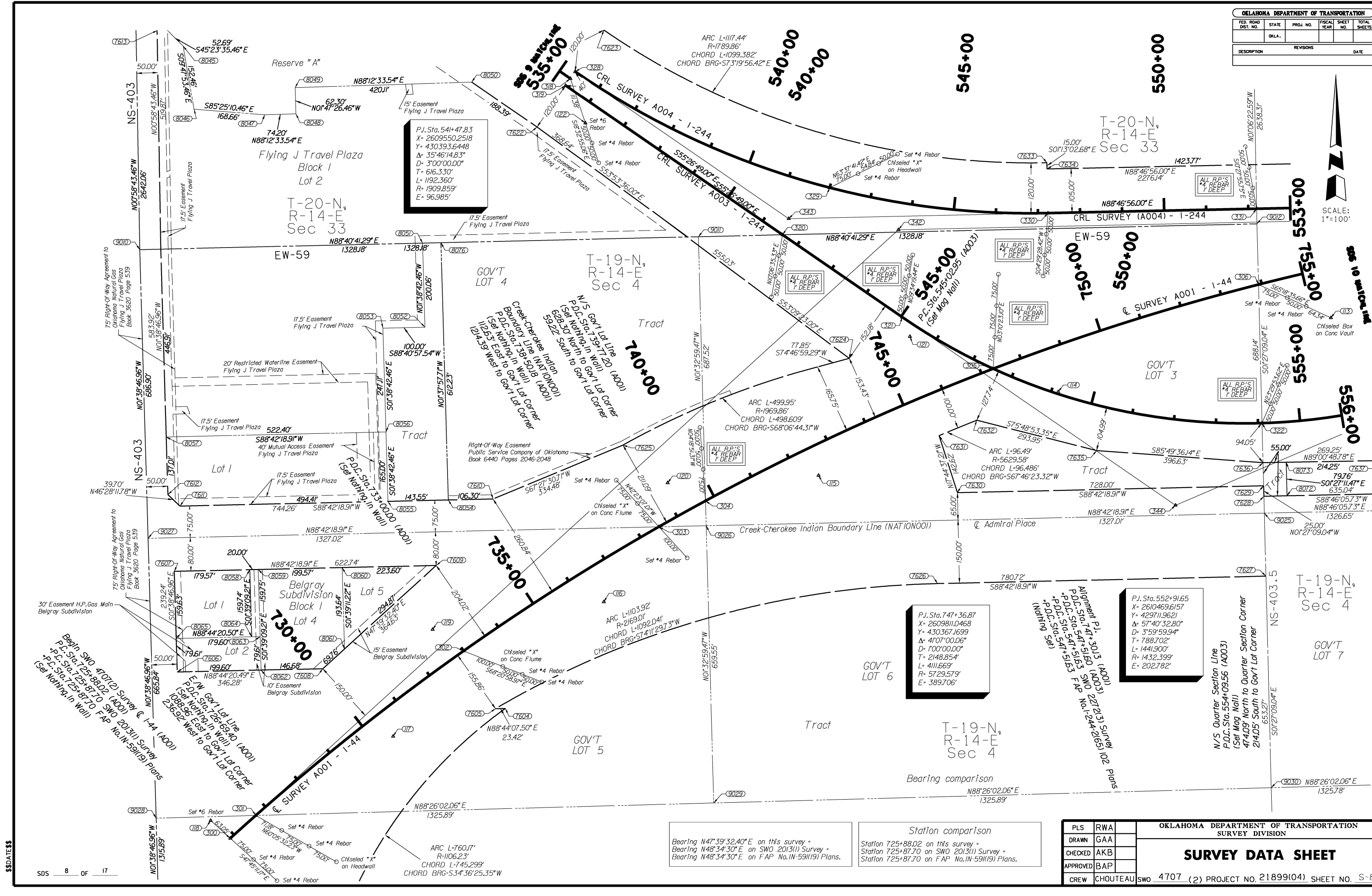
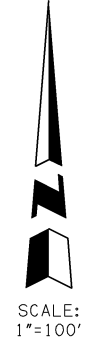


OKLAHOMA DEPARTMENT OF TRANSPORTATION				
FED. ROAD DIST. NO.	STATE	PROJ. NO.	FISCAL YEAR	SHEET NO. TOTAL SHEETS
	OKLA.			
DESCRIPTION		REVISIONS		DATE



P.I. Sta. 541+47.83
 X= 2609550.2518
 Y= 430393.6448
 Δ= 35°46'14.83"
 D= 3'00'00.00"
 T= 616.330'
 L= 1192.360'
 R= 1909.859'
 E= 96.985'

P.I. Sta. 747+36.87
 X= 2609811.0468
 Y= 429711.9621
 Δ= 57°40'32.80"
 D= 3'59'59.94"
 T= 788.702'
 L= 1441.900'
 R= 1432.399'
 E= 202.782'

P.I. Sta. 552+91.65
 X= 2610469.6157
 Y= 429711.9621
 Δ= 57°40'32.80"
 D= 3'59'59.94"
 T= 788.702'
 L= 1441.900'
 R= 1432.399'
 E= 202.782'

Bearing N47°39'32.40"E on this survey -
 Bearing N48°34'30"E on SWO 2013(1) Survey -
 Bearing N48°34'30"E on FAP No. IN-59(19) Plans.

Station comparison
 Station 725+88.02 on this survey -
 Station 725+87.70 on SWO 2013(1) Survey -
 Station 725+87.70 on FAP No. IN-59(19) Plans.

PLS	RWA
DRAWN	GAA
CHECKED	AKB
APPROVED	BAP
CREW	CHOUTEAU

OKLAHOMA DEPARTMENT OF TRANSPORTATION SURVEY DIVISION	
SURVEY DATA SHEET	
SWO 4707 (2) PROJECT NO. 21899(04) SHEET NO. S-8	