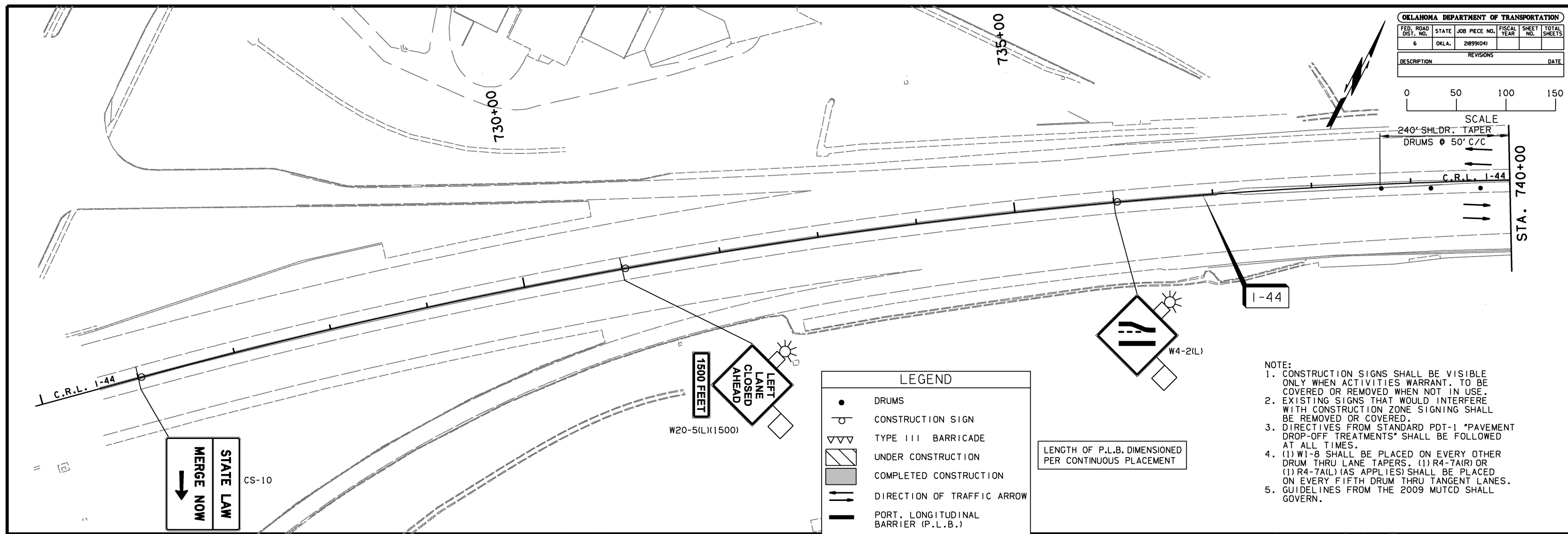


OKLAHOMA DEPARTMENT OF TRANSPORTATION					
FED. ROAD DIST. NO.	STATE	JOB PIECE NO.	FISCAL YEAR	SHEET NO.	TOTAL SHEETS
6	OKLA.	21899(04)			
DESCRIPTION			REVISIONS	DATE	



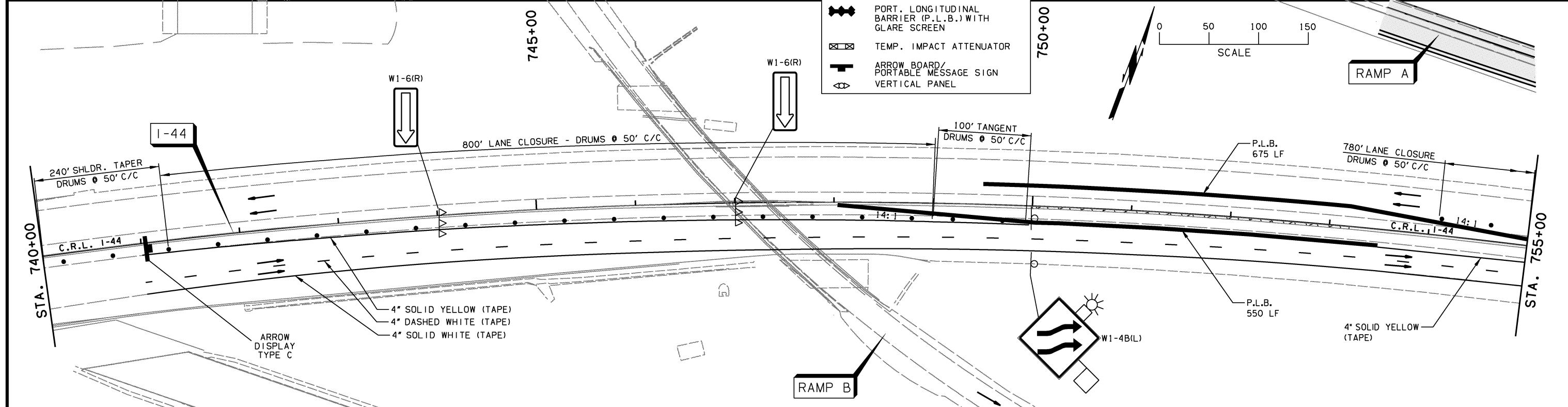
SCALE
240' SHLDR. TAPER
DRUMS @ 50' C/C



LEGEND	
●	DRUMS
○	CONSTRUCTION SIGN
▽▽▽	TYPE III BARRICADE
▨	UNDER CONSTRUCTION
▩	COMPLETED CONSTRUCTION
→	DIRECTION OF TRAFFIC ARROW
—	PORT. LONGITUDINAL BARRIER (P.L.B.)
— —	PORT. LONGITUDINAL BARRIER (P.L.B.) WITH GLARE SCREEN
⊠	TEMP. IMPACT ATTENUATOR
→	ARROW BOARD/PORTABLE MESSAGE SIGN
⊞	VERTICAL PANEL

LENGTH OF P.L.B. DIMENSIONED PER CONTINUOUS PLACEMENT

- NOTE:
- CONSTRUCTION SIGNS SHALL BE VISIBLE ONLY WHEN ACTIVITIES WARRANT. TO BE COVERED OR REMOVED WHEN NOT IN USE.
 - EXISTING SIGNS THAT WOULD INTERFERE WITH CONSTRUCTION ZONE SIGNING SHALL BE REMOVED OR COVERED.
 - DIRECTIVES FROM STANDARD PDT-1 "PAVEMENT DROP-OFF TREATMENTS" SHALL BE FOLLOWED AT ALL TIMES.
 - (1) W1-8 SHALL BE PLACED ON EVERY OTHER DRUM THRU LANE TAPERS. (1) R4-7A(R) OR (1) R4-7A(L) (AS APPLIES) SHALL BE PLACED ON EVERY FIFTH DRUM THRU TANGENT LANES.
 - GUIDELINES FROM THE 2009 MUTCD SHALL GOVERN.



PHASE 12 (COMPLETE I-44 CONSTRUCTION)
ALL TRAFFIC UTILIZES NEW CONSTRUCTION.
REMOVE REMAINING TEMPORARY PAVEMENT.
COMPLETE FINAL GRADING AND CLEANUP.

FOR ADVANCED WARNING AND DETOUR INFORMATION SEE SHEETS 260 THRU 263.			PHASE 12
DESIGN	AKS	6/14	TULSA & ROGERS COUNTIES
DRAWN	TML	6/14	SUGGESTED CONSTRUCTION TRAFFIC CONTROL (SHEET 49 OF 52)
CHECKED	KMM	6/16	
APPROVED			
SQUAD	GARVER	STATE JOB NO. 21899(04)	SHEET NO. 312