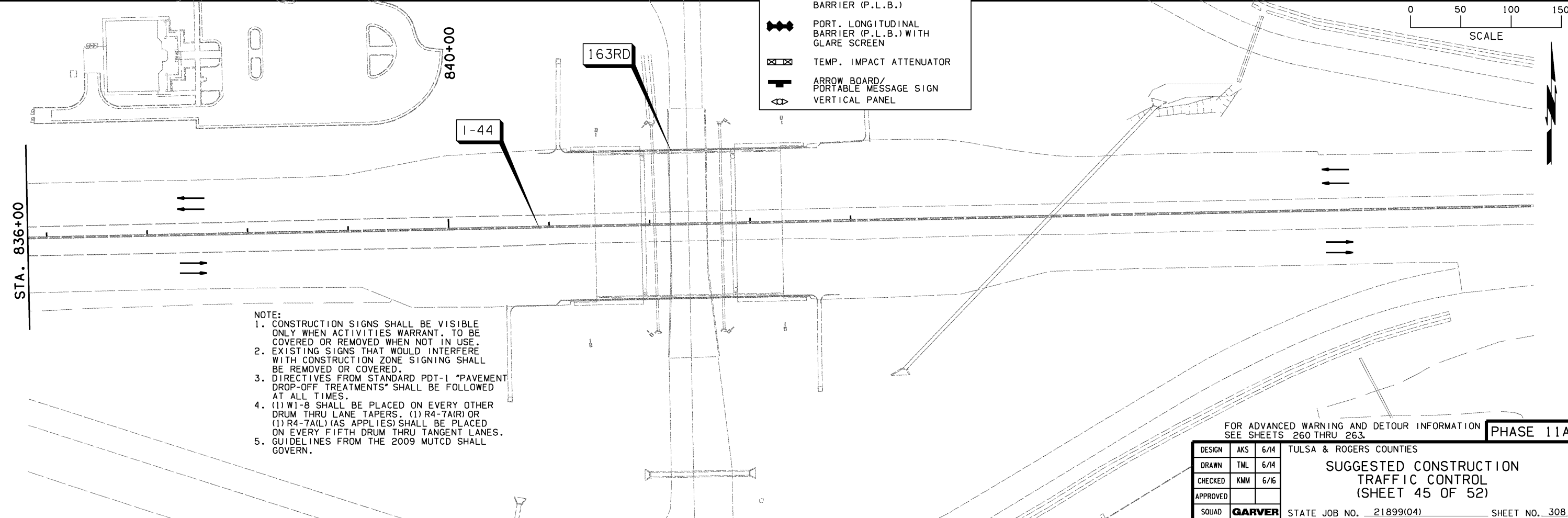
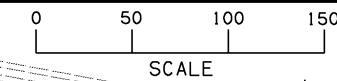


PHASE 11A (CONTINUE I-44 CONSTRUCTION, EXISTING STRUCTURE REMOVAL)
 RETURN EASTBOUND I-44 TRAFFIC TO NORMAL OPERATING CONDITIONS.
 WESTBOUND I-44 TRAFFIC REMAINS SHIFTED FROM PHASE 10.
 SHIFT WESTBOUND OFF RAMP A TRAFFIC TO INSIDE LANE.
 REMOVE TEMPORARY ASPHALT PAVEMENT PATCH AND EXISTING CROSS STRUCTURES.
 ONCE STRUCTURE IS REMOVED, CONSTRUCT FINAL FULL DEPTH PAVING SECTION.

LEGEND	
●	DRUMS
○	CONSTRUCTION SIGN
▽▽▽	TYPE III BARRICADE
▨	UNDER CONSTRUCTION
■	COMPLETED CONSTRUCTION
→	DIRECTION OF TRAFFIC ARROW
—	PORT. LONGITUDINAL BARRIER (P.L.B.)
— —	PORT. LONGITUDINAL BARRIER (P.L.B.) WITH GLARE SCREEN
⊠	TEMP. IMPACT ATTENUATOR
↑	ARROW BOARD/PORTABLE MESSAGE SIGN
◻	VERTICAL PANEL

LENGTH OF P.L.B. DIMENSIONED PER CONTINUOUS PLACEMENT



- NOTE:**
- CONSTRUCTION SIGNS SHALL BE VISIBLE ONLY WHEN ACTIVITIES WARRANT. TO BE COVERED OR REMOVED WHEN NOT IN USE.
 - EXISTING SIGNS THAT WOULD INTERFERE WITH CONSTRUCTION ZONE SIGNING SHALL BE REMOVED OR COVERED.
 - DIRECTIVES FROM STANDARD PDT-1 "PAVEMENT DROP-OFF TREATMENTS" SHALL BE FOLLOWED AT ALL TIMES.
 - (1) W1-8 SHALL BE PLACED ON EVERY OTHER DRUM THRU LANE TAPERS. (1) R4-7A(R) OR (1) R4-7A(L) (AS APPLIES) SHALL BE PLACED ON EVERY FIFTH DRUM THRU TANGENT LANES.
 - GUIDELINES FROM THE 2009 MUTCD SHALL GOVERN.

FOR ADVANCED WARNING AND DETOUR INFORMATION SEE SHEETS 260 THRU 263. **PHASE 11A**

DESIGN	AKS	6/14	TULSA & ROGERS COUNTIES
DRAWN	TML	6/14	
CHECKED	KMM	6/16	
APPROVED			
SQUAD	GARVER		

SUGGESTED CONSTRUCTION TRAFFIC CONTROL (SHEET 45 OF 52)

STATE JOB NO. 21899(04) SHEET NO. 308