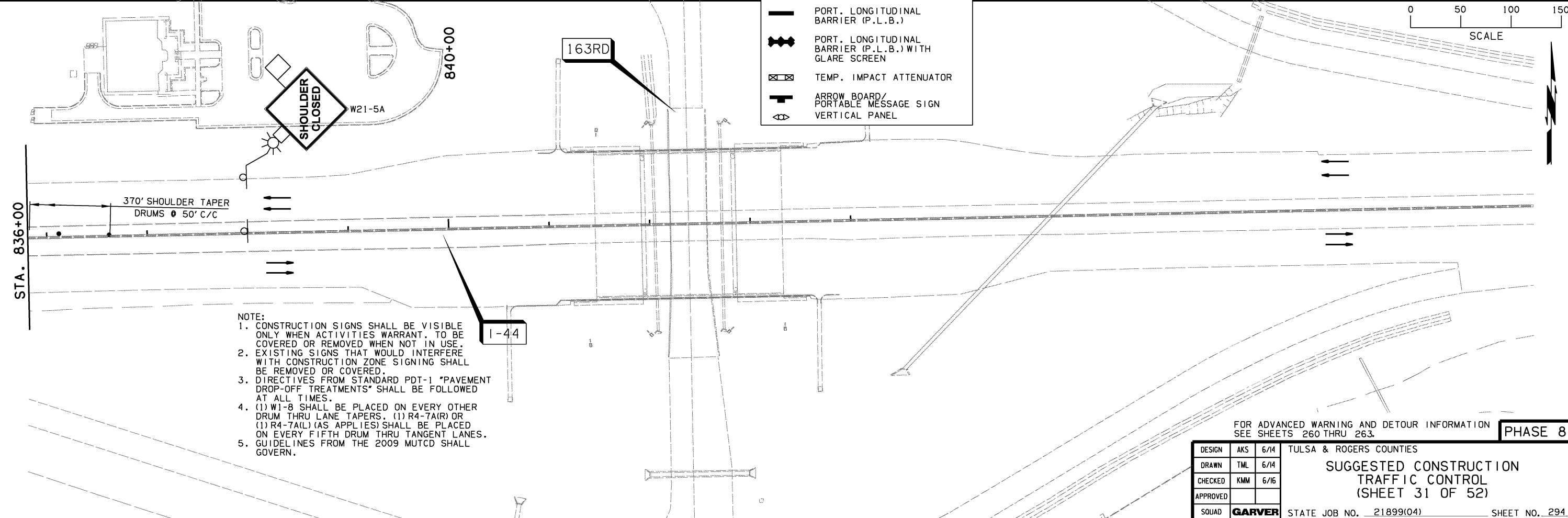
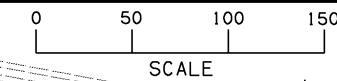


**PHASE 8 (CONTINUE I-44 CONSTRUCTION, WESTBOUND)**  
 I-44 TRAFFIC REMAINS ON EXISTING EASTBOUND LANES AND TEMPORARY WIDENING. RELOCATE TEMPORARY WESTBOUND OFF RAMP A ONTO NEWLY CONSTRUCTED PAVEMENT. COMPLETE CONSTRUCTION OF PROPOSED WESTBOUND PAVEMENT AND RAMP A. COMPLETE CONSTRUCTION OF NORTH HALF BRIDGE 'A'.

LEGEND	
●	DRUMS
⊕	CONSTRUCTION SIGN
▽▽▽	TYPE III BARRICADE
▨	UNDER CONSTRUCTION
▩	COMPLETED CONSTRUCTION
→	DIRECTION OF TRAFFIC ARROW
—	PORT. LONGITUDINAL BARRIER (P.L.B.)
— —	PORT. LONGITUDINAL BARRIER (P.L.B.) WITH GLARE SCREEN
⊠	TEMP. IMPACT ATTENUATOR
↑	ARROW BOARD/PORTABLE MESSAGE SIGN
⊕	VERTICAL PANEL

LENGTH OF P.L.B. DIMENSIONED PER CONTINUOUS PLACEMENT



- NOTE:**
- CONSTRUCTION SIGNS SHALL BE VISIBLE ONLY WHEN ACTIVITIES WARRANT. TO BE COVERED OR REMOVED WHEN NOT IN USE.
  - EXISTING SIGNS THAT WOULD INTERFERE WITH CONSTRUCTION ZONE SIGNING SHALL BE REMOVED OR COVERED.
  - DIRECTIVES FROM STANDARD PDT-1 "PAVEMENT DROP-OFF TREATMENTS" SHALL BE FOLLOWED AT ALL TIMES.
  - (1) W1-8 SHALL BE PLACED ON EVERY OTHER DRUM THRU LANE TAPERS. (1) R4-7A(R) OR (1) R4-7A(L) (AS APPLIES) SHALL BE PLACED ON EVERY FIFTH DRUM THRU TANGENT LANES.
  - GUIDELINES FROM THE 2009 MUTCD SHALL GOVERN.

FOR ADVANCED WARNING AND DETOUR INFORMATION SEE SHEETS 260 THRU 263. **PHASE 8**

DESIGN	AKS	6/14	TULSA & ROGERS COUNTIES
DRAWN	TML	6/14	SUGGESTED CONSTRUCTION TRAFFIC CONTROL (SHEET 31 OF 52)
CHECKED	KMM	6/16	
APPROVED			
SQUAD	<b>GARVER</b>	STATE JOB NO. 21899(04)	SHEET NO. 294