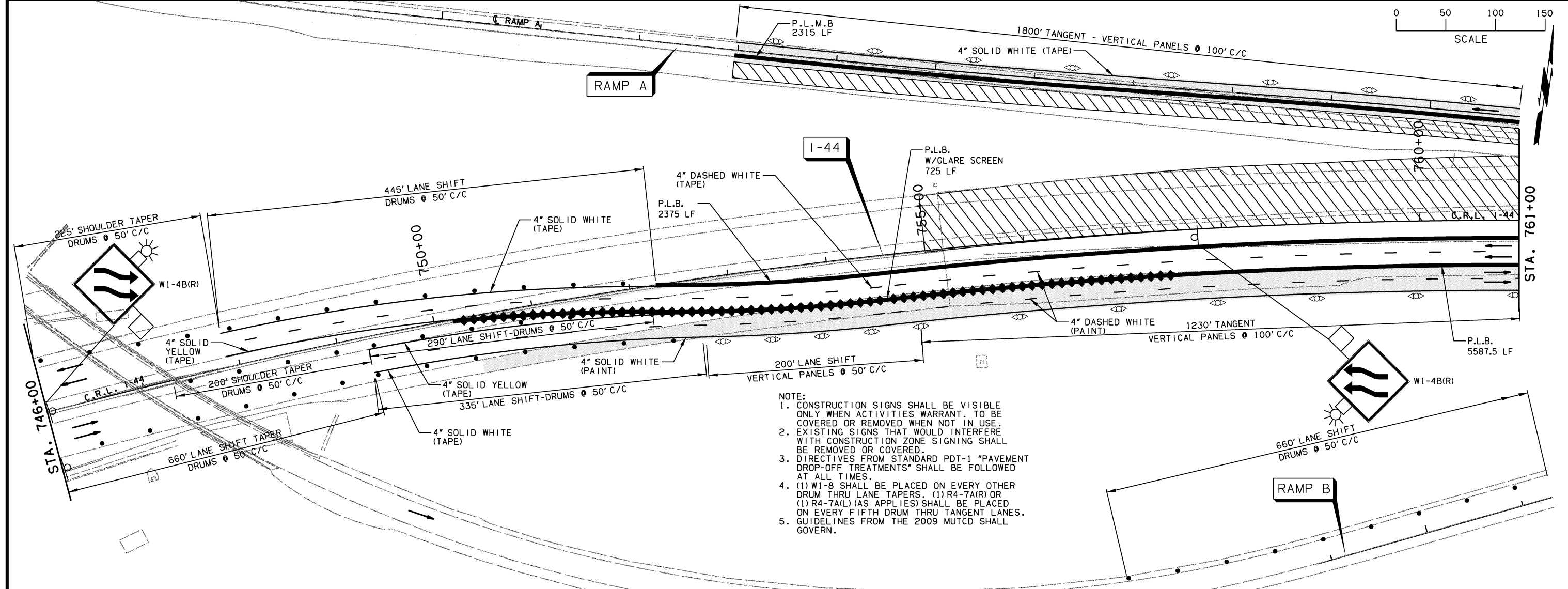
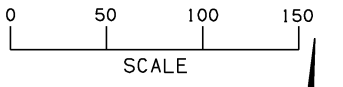
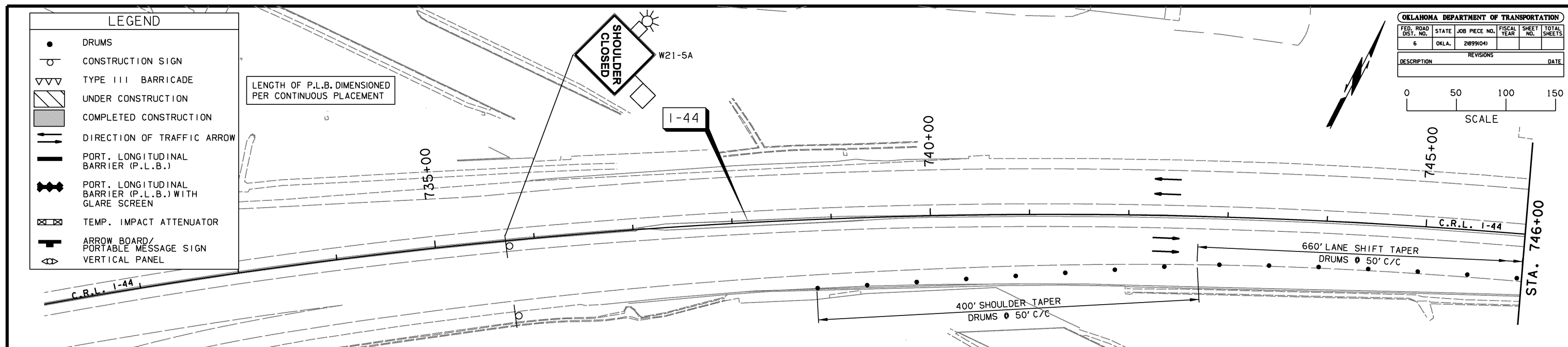


LEGEND

- DRUMS
- ⊕ CONSTRUCTION SIGN
- ▽▽▽ TYPE III BARRICADE
- ▨ UNDER CONSTRUCTION
- ▩ COMPLETED CONSTRUCTION
- ⇨ DIRECTION OF TRAFFIC ARROW
- ▬ PORT. LONGITUDINAL BARRIER (P.L.B.)
- ▬▬ PORT. LONGITUDINAL BARRIER (P.L.B.) WITH GLARE SCREEN
- ⊠ TEMP. IMPACT ATTENUATOR
- ⇨ ARROW BOARD/ PORTABLE MESSAGE SIGN VERTICAL PANEL

LENGTH OF P.L.B. DIMENSIONED PER CONTINUOUS PLACEMENT



- NOTE:
1. CONSTRUCTION SIGNS SHALL BE VISIBLE ONLY WHEN ACTIVITIES WARRANT. TO BE COVERED OR REMOVED WHEN NOT IN USE.
 2. EXISTING SIGNS THAT WOULD INTERFERE WITH CONSTRUCTION ZONE SIGNING SHALL BE REMOVED OR COVERED.
 3. DIRECTIVES FROM STANDARD PDT-1 "PAVEMENT DROP-OFF TREATMENTS" SHALL BE FOLLOWED AT ALL TIMES.
 4. (1) W1-8 SHALL BE PLACED ON EVERY OTHER DRUM THRU LANE TAPERS. (1) R4-7A(R) OR (1) R4-7A(L) (AS APPLIES) SHALL BE PLACED ON EVERY FIFTH DRUM THRU TANGENT LANES.
 5. GUIDELINES FROM THE 2009 MUTCD SHALL GOVERN.

PHASE 8 (CONTINUE 1-44 CONSTRUCTION, WESTBOUND)
 1-44 TRAFFIC REMAINS ON EXISTING EASTBOUND LANES AND TEMPORARY WIDENING. RELOCATE TEMPORARY WESTBOUND OFF RAMP A ONTO NEWLY CONSTRUCTED PAVEMENT. COMPLETE CONSTRUCTION OF PROPOSED WESTBOUND PAVEMENT AND RAMP A. COMPLETE CONSTRUCTION OF NORTH HALF BRIDGE 'A'.

FOR ADVANCED WARNING AND DETOUR INFORMATION SEE SHEETS 260 THRU 263. **PHASE 8**

DESIGN	AKS	6/14	TULSA & ROGERS COUNTIES
DRAWN	TML	6/14	SUGGESTED CONSTRUCTION TRAFFIC CONTROL (SHEET 28 OF 52)
CHECKED	KMM	6/16	
APPROVED			
SQUAD	GARVER	STATE JOB NO. 21899(04)	SHEET NO. 291