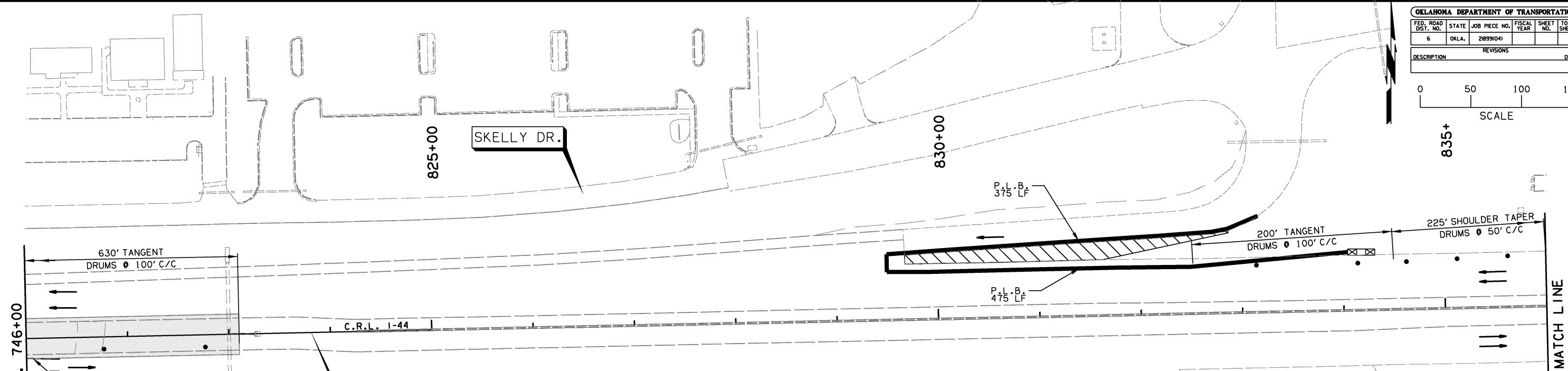


835+

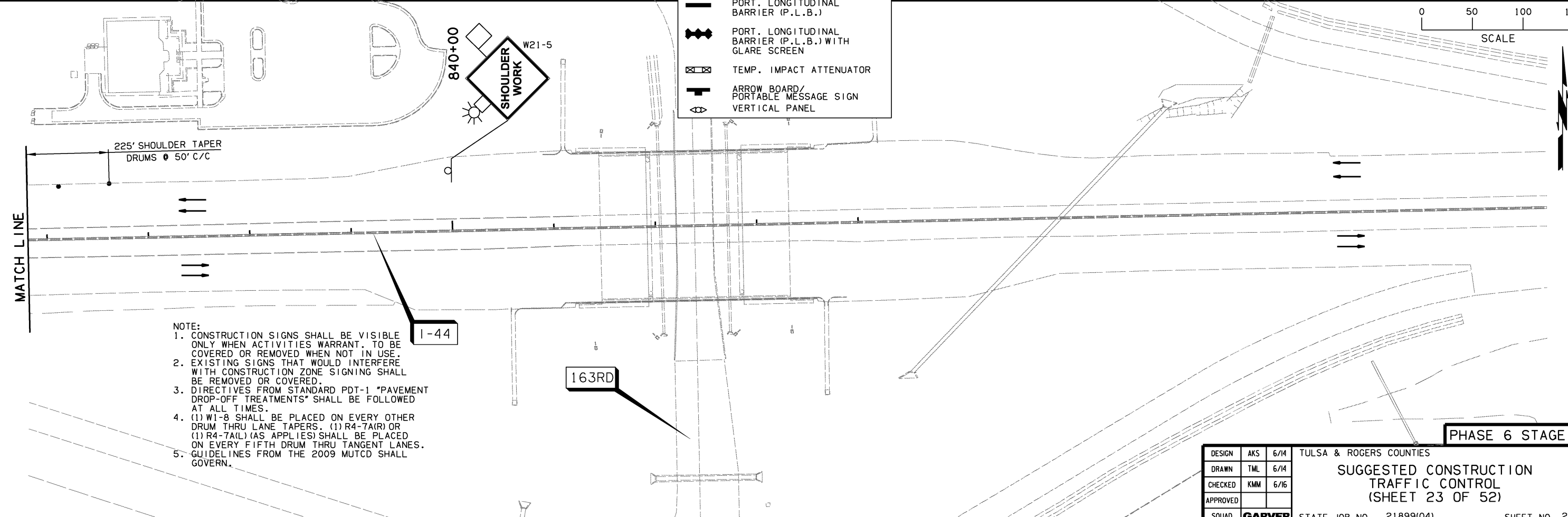


LEGEND	
	DRUMS
	CONSTRUCTION SIGN
	TYPE III BARRICADE
	UNDER CONSTRUCTION
	COMPLETED CONSTRUCTION
	DIRECTION OF TRAFFIC ARROW
	PORT. LONGITUDINAL BARRIER (P.L.B.)
	PORT. LONGITUDINAL BARRIER (P.L.B.) WITH GLARE SCREEN
	TEMP. IMPACT ATTENUATOR
	ARROW BOARD/ PORTABLE MESSAGE SIGN VERTICAL PANEL

PHASE 6 (STAGE 1 AND 2 BEGIN I-44 CONSTRUCTION, TEMPORARY PAVEMENT)
 SHIFT I-44 TRAFFIC ONTO OUTSIDE SHOULDERS TO CONSTRUCT TEMPORARY PAVEMENT THROUGH THE EXISTING MEDIANS FOR CROSSOVERS AND RAMP ACCESS IN FOLLOWING PHASES. ONCE TEMPORARY PAVING WITHIN THE MEDIAN IS COMPLETE, SHIFT I-44 TRAFFIC TOWARD THE INSIDE SHOULDER TO CONSTRUCT THE REMAINING TEMPORARY PAVEMENT WIDENINGS AND SHOULDER STRENGTHENING.

FOR ADVANCED WARNING AND DETOUR INFORMATION SEE SHEETS 260 THRU 263.

LENGTH OF P.L.B. DIMENSIONED PER CONTINUOUS PLACEMENT



- NOTE:
- CONSTRUCTION SIGNS SHALL BE VISIBLE ONLY WHEN ACTIVITIES WARRANT. TO BE COVERED OR REMOVED WHEN NOT IN USE.
 - EXISTING SIGNS THAT WOULD INTERFERE WITH CONSTRUCTION ZONE SIGNING SHALL BE REMOVED OR COVERED.
 - DIRECTIVES FROM STANDARD PDT-1 "PAVEMENT DROP-OFF TREATMENTS" SHALL BE FOLLOWED AT ALL TIMES.
 - (1) W1-8 SHALL BE PLACED ON EVERY OTHER DRUM THRU LANE TAPERS. (1) R4-7A(R) OR (1) R4-7A(L) (AS APPLIES) SHALL BE PLACED ON EVERY FIFTH DRUM THRU TANGENT LANES.
 - GUIDELINES FROM THE 2009 MUTCD SHALL GOVERN.

DESIGN	AKS	6/14
DRAWN	TML	6/14
CHECKED	KMM	6/16
APPROVED		
SQUAD	GARVER	

TULSA & ROGERS COUNTIES
SUGGESTED CONSTRUCTION TRAFFIC CONTROL
 (SHEET 23 OF 52)
 STATE JOB NO. 21899(04) SHEET NO. 286