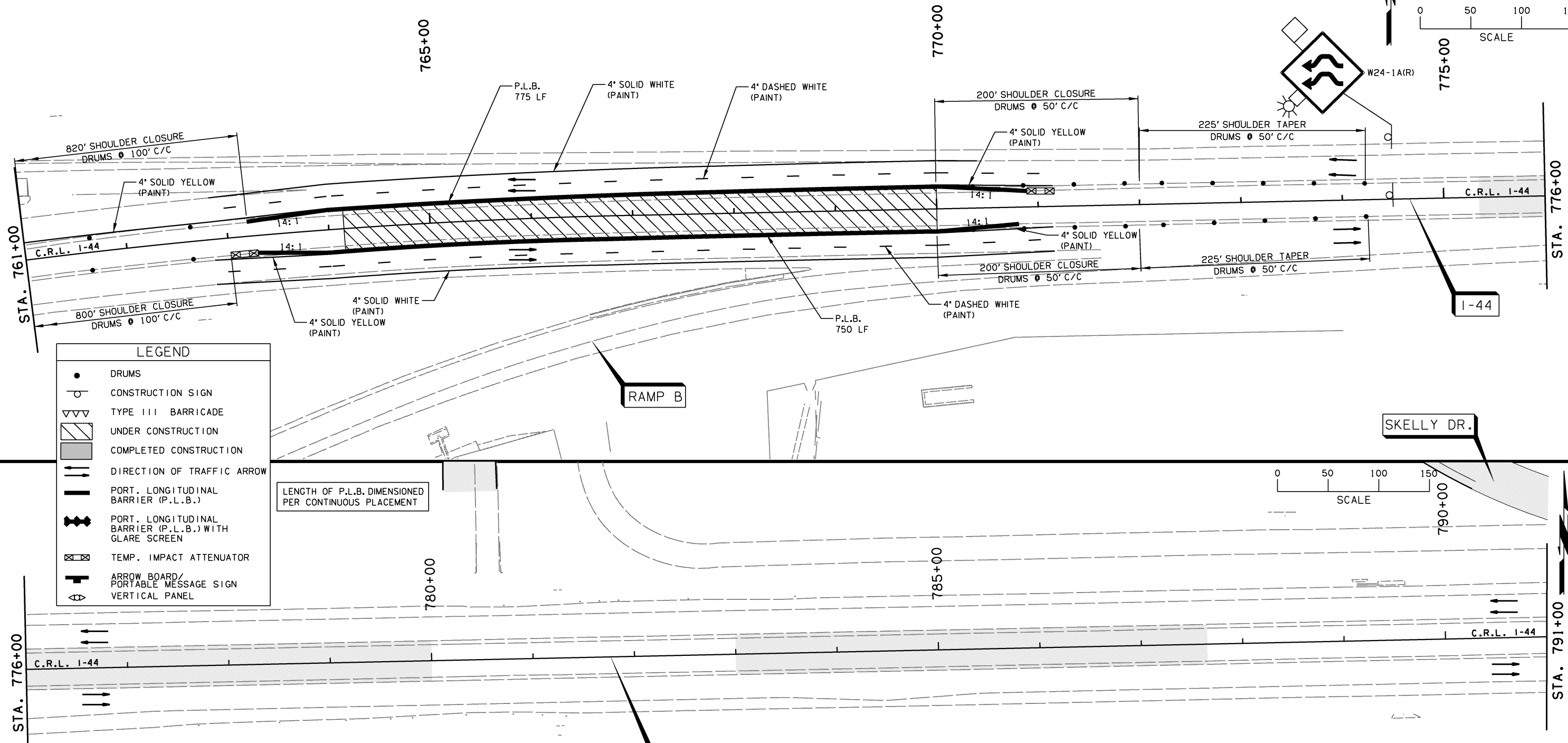
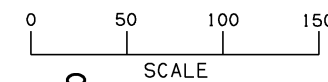


PHASE 6 (STAGE 1 AND 2 BEGIN I-44 CONSTRUCTION, TEMPORARY PAVEMENT)

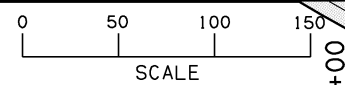
SHIFT I-44 TRAFFIC ONTO OUTSIDE SHOULDERS TO CONSTRUCT TEMPORARY PAVEMENT THROUGH THE EXISTING MEDIANS FOR CROSSOVERS AND RAMP ACCESS IN FOLLOWING PHASES. ONCE TEMPORARY PAVING WITHIN THE MEDIAN IS COMPLETE, SHIFT I-44 TRAFFIC TOWARD THE INSIDE SHOULDER TO CONSTRUCT THE REMAINING TEMPORARY PAVEMENT WIDENINGS AND SHOULDER STRENGTHENING.

OKLAHOMA DEPARTMENT OF TRANSPORTATION					
FED. ROAD DIST. NO.	STATE	JOB PIECE NO.	FISCAL YEAR	SHEET NO.	TOTAL SHEETS
6	OKLA.	21899(04)			
DESCRIPTION			REVISIONS	DATE	



LEGEND	
●	DRUMS
⊙	CONSTRUCTION SIGN
▽▽▽	TYPE III BARRICADE
▨	UNDER CONSTRUCTION
▩	COMPLETED CONSTRUCTION
→	DIRECTION OF TRAFFIC ARROW
—	PORT. LONGITUDINAL BARRIER (P.L.B.)
— —	PORT. LONGITUDINAL BARRIER (P.L.B.) WITH GLARE SCREEN
⊠	TEMP. IMPACT ATTENUATOR
⊠	ARROW BOARD/PORTABLE MESSAGE SIGN
⊠	VERTICAL PANEL

LENGTH OF P.L.B. DIMENSIONED PER CONTINUOUS PLACEMENT



- NOTE:
- CONSTRUCTION SIGNS SHALL BE VISIBLE ONLY WHEN ACTIVITIES WARRANT. TO BE COVERED OR REMOVED WHEN NOT IN USE.
 - EXISTING SIGNS THAT WOULD INTERFERE WITH CONSTRUCTION ZONE SIGNING SHALL BE REMOVED OR COVERED.
 - DIRECTIVES FROM STANDARD PDT-1 "PAVEMENT DROP-OFF TREATMENTS" SHALL BE FOLLOWED AT ALL TIMES.
 - (1) W1-8 SHALL BE PLACED ON EVERY OTHER DRUM THRU LANE TAPERS. (1) R4-7A(R) OR (1) R4-7A(L) (AS APPLIES) SHALL BE PLACED ON EVERY FIFTH DRUM THRU TANGENT LANES.
 - GUIDELINES FROM THE 2009 MUTCD SHALL GOVERN.

FOR ADVANCED WARNING AND DETOUR INFORMATION SEE SHEETS 260 THRU 263.

DESIGN	AKS	6/14	TULSA & ROGERS COUNTIES
DRAWN	TML	6/14	SUGGESTED CONSTRUCTION TRAFFIC CONTROL (SHEET 17 OF 52)
CHECKED	KMM	6/16	
APPROVED			PHASE 6 STAGE 1
SQUAD	GARVER		