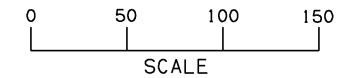
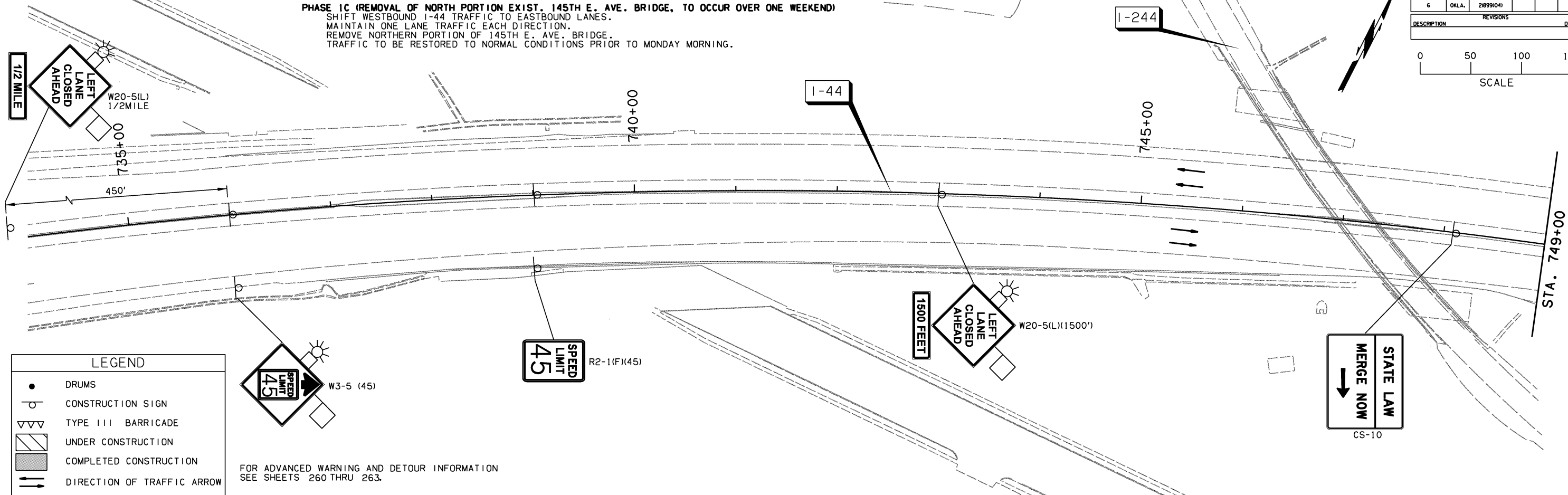


FED. ROAD DIST. NO.	STATE	JOB PIECE NO.	FISCAL YEAR	SHEET NO.	TOTAL SHEETS
6	OKLA.	21899(04)			

DESCRIPTION	REVISIONS	DATE



**PHASE 1C (REMOVAL OF NORTH PORTION EXIST. 145TH E. AVE. BRIDGE, TO OCCUR OVER ONE WEEKEND)**  
 SHIFT WESTBOUND I-44 TRAFFIC TO EASTBOUND LANES.  
 MAINTAIN ONE LANE TRAFFIC EACH DIRECTION.  
 REMOVE NORTHERN PORTION OF 145TH E. AVE. BRIDGE.  
 TRAFFIC TO BE RESTORED TO NORMAL CONDITIONS PRIOR TO MONDAY MORNING.

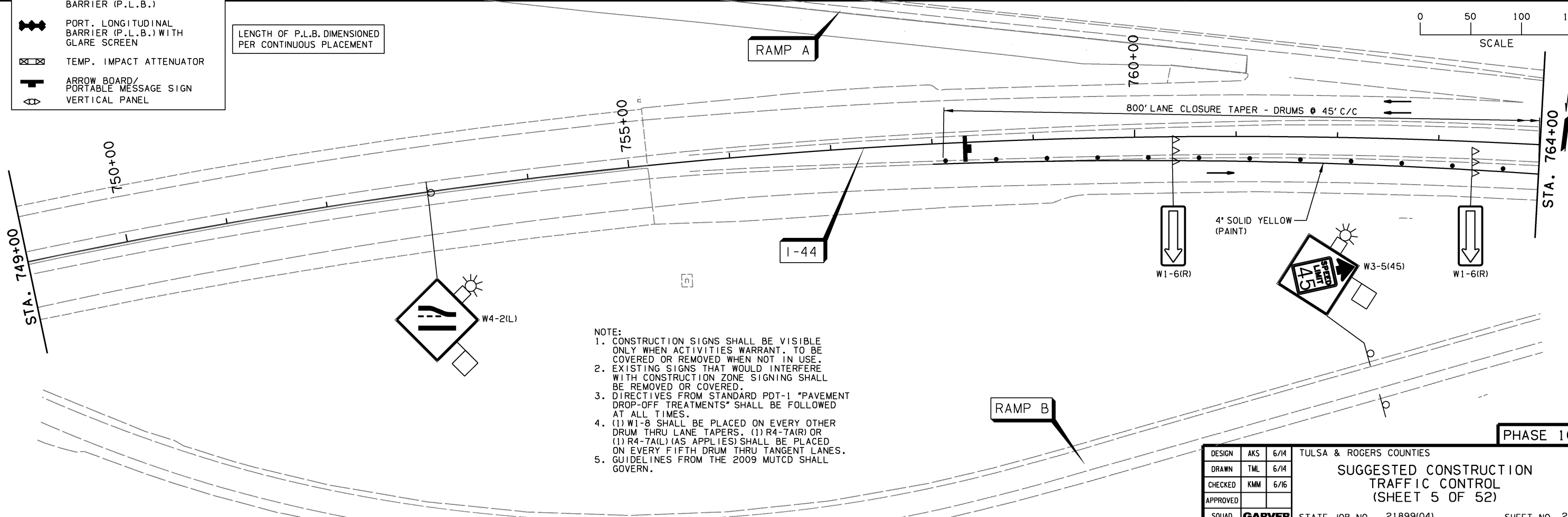


**LEGEND**

- DRUMS
- CONSTRUCTION SIGN
- ▴ TYPE III BARRICADE
- ▨ UNDER CONSTRUCTION
- ▩ COMPLETED CONSTRUCTION
- ⇄ DIRECTION OF TRAFFIC ARROW
- PORT. LONGITUDINAL BARRIER (P.L.B.)
- PORT. LONGITUDINAL BARRIER (P.L.B.) WITH GLARE SCREEN
- ⊠ TEMP. IMPACT ATTENUATOR
- ⇄ ARROW BOARD/PORTABLE MESSAGE SIGN
- ⊠ VERTICAL PANEL

FOR ADVANCED WARNING AND DETOUR INFORMATION SEE SHEETS 260 THRU 263.

LENGTH OF P.L.B. DIMENSIONED PER CONTINUOUS PLACEMENT



- NOTE:**
- CONSTRUCTION SIGNS SHALL BE VISIBLE ONLY WHEN ACTIVITIES WARRANT. TO BE COVERED OR REMOVED WHEN NOT IN USE.
  - EXISTING SIGNS THAT WOULD INTERFERE WITH CONSTRUCTION ZONE SIGNING SHALL BE REMOVED OR COVERED.
  - DIRECTIVES FROM STANDARD PDT-1 "PAVEMENT DROP-OFF TREATMENTS" SHALL BE FOLLOWED AT ALL TIMES.
  - (1) W1-8 SHALL BE PLACED ON EVERY OTHER DRUM THRU LANE TAPERS. (1) R4-7A(R) OR (1) R4-7A(L) (AS APPLIES) SHALL BE PLACED ON EVERY FIFTH DRUM THRU TANGENT LANES.
  - GUIDELINES FROM THE 2009 MUTCD SHALL GOVERN.

DESIGN	AKS	6/14	TULSA & ROGERS COUNTIES
DRAWN	TML	6/14	SUGGESTED CONSTRUCTION TRAFFIC CONTROL (SHEET 5 OF 52)
CHECKED	KMM	6/16	
APPROVED			
SQUAD	<b>GARVER</b>		STATE JOB NO. 21899(04) SHEET NO. 268