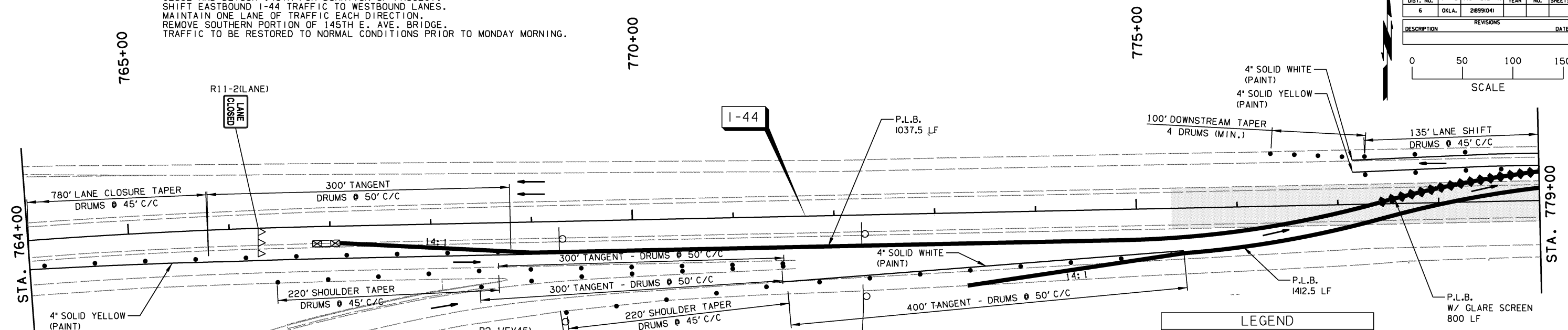
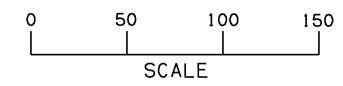


PHASE 1B (REMOVAL OF SOUTH PORTION EXIST. 145TH E. AVE. BRIDGE, TO OCCUR OVER ONE WEEKEND

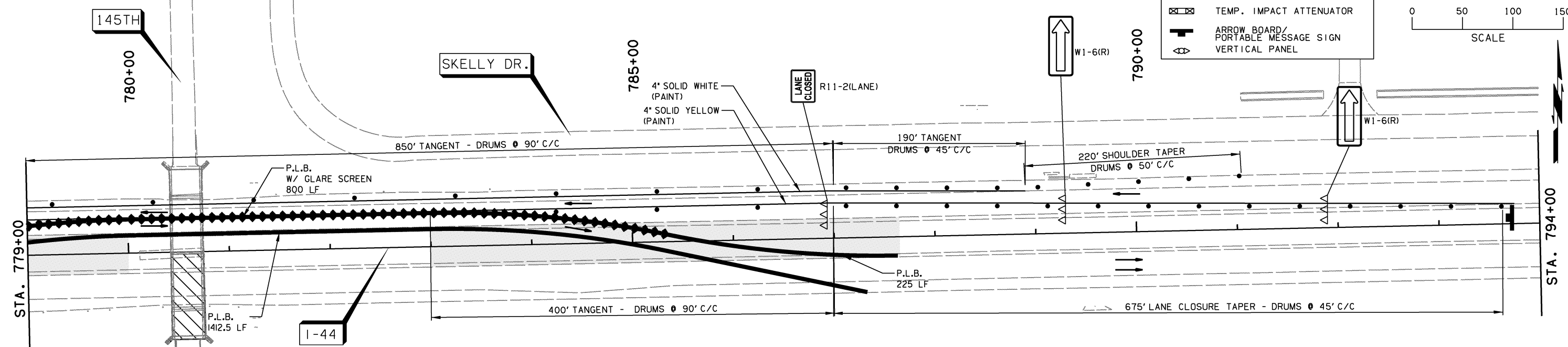
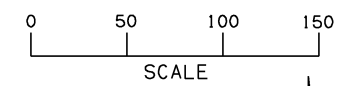
CLOSE AND DETOUR 145TH FOR DURATION OF PROJECT.
 SHIFT EASTBOUND I-44 TRAFFIC TO WESTBOUND LANES.
 MAINTAIN ONE LANE OF TRAFFIC EACH DIRECTION.
 REMOVE SOUTHERN PORTION OF 145TH E. AVE. BRIDGE.
 TRAFFIC TO BE RESTORED TO NORMAL CONDITIONS PRIOR TO MONDAY MORNING.

OKLAHOMA DEPARTMENT OF TRANSPORTATION					
FED. ROAD DIST. NO.	STATE	JOB PIECE NO.	FISCAL YEAR	SHEET NO.	TOTAL SHEETS
6	OKLA.	21899(04)			
DESCRIPTION			REVISIONS	DATE	



LEGEND	
●	DRUMS
○	CONSTRUCTION SIGN
▽▽	TYPE III BARRICADE
▨	UNDER CONSTRUCTION
■	COMPLETED CONSTRUCTION
→	DIRECTION OF TRAFFIC ARROW
—	PORT. LONGITUDINAL BARRIER (P.L.B.)
◆◆	PORT. LONGITUDINAL BARRIER (P.L.B.) WITH GLARE SCREEN
⊠	TEMP. IMPACT ATTENUATOR
↑	ARROW BOARD/ PORTABLE MESSAGE SIGN
⊞	VERTICAL PANEL

LENGTH OF P.L.B. DIMENSIONED PER CONTINUOUS PLACEMENT



- NOTE:
- CONSTRUCTION SIGNS SHALL BE VISIBLE ONLY WHEN ACTIVITIES WARRANT. TO BE COVERED OR REMOVED WHEN NOT IN USE.
 - EXISTING SIGNS THAT WOULD INTERFERE WITH CONSTRUCTION ZONE SIGNING SHALL BE REMOVED OR COVERED.
 - DIRECTIVES FROM STANDARD PDT-1 "PAVEMENT DROP-OFF TREATMENTS" SHALL BE FOLLOWED AT ALL TIMES.
 - (1) W1-8 SHALL BE PLACED ON EVERY OTHER DRUM THRU LANE TAPERS. (1) R4-7A(R) OR (1) R4-7A(L) (AS APPLIES) SHALL BE PLACED ON EVERY FIFTH DRUM THRU TANGENT LANES.
 - GUIDELINES FROM THE 2009 MUTCD SHALL GOVERN.

FOR ADVANCED WARNING AND DETOUR INFORMATION SEE SHEETS 260 THRU 263.

PHASE 1B

DESIGN	AKS	6/14	TULSA & ROGERS COUNTIES
DRAWN	TML	6/14	SUGGESTED CONSTRUCTION TRAFFIC CONTROL (SHEET 3 OF 52)
CHECKED	KMM	6/16	
APPROVED			
SQUAD	GARVER	STATE JOB NO. 21899(04)	SHEET NO. 266