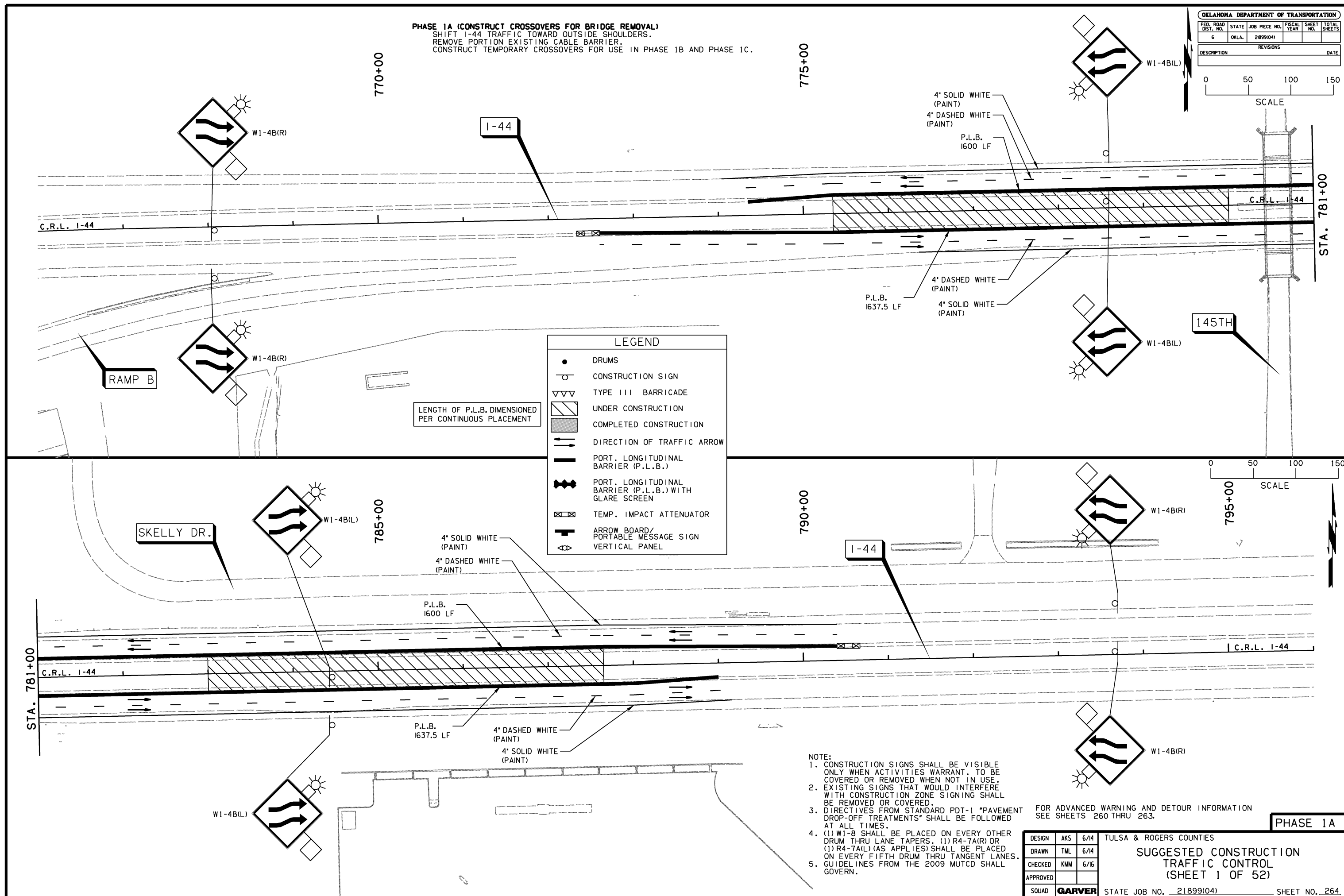


FED. ROAD DIST. NO.	STATE	JOB PIECE NO.	FISCAL YEAR	SHEET NO.	TOTAL SHEETS
6	OKLA.	21899(04)			

DESCRIPTION	REVISIONS	DATE



PHASE 1A (CONSTRUCT CROSSOVERS FOR BRIDGE REMOVAL)
 SHIFT I-44 TRAFFIC TOWARD OUTSIDE SHOULDERS.
 REMOVE PORTION EXISTING CABLE BARRIER.
 CONSTRUCT TEMPORARY CROSSOVERS FOR USE IN PHASE 1B AND PHASE 1C.



LEGEND	
●	DRUMS
○	CONSTRUCTION SIGN
▽▽▽	TYPE III BARRICADE
▨	UNDER CONSTRUCTION
▩	COMPLETED CONSTRUCTION
→	DIRECTION OF TRAFFIC ARROW
—	PORT. LONGITUDINAL BARRIER (P.L.B.)
— —	PORT. LONGITUDINAL BARRIER (P.L.B.) WITH GLARE SCREEN
⊠	TEMP. IMPACT ATTENUATOR
→	ARROW BOARD/ PORTABLE MESSAGE SIGN
⊞	VERTICAL PANEL

LENGTH OF P.L.B. DIMENSIONED PER CONTINUOUS PLACEMENT

- NOTE:
- CONSTRUCTION SIGNS SHALL BE VISIBLE ONLY WHEN ACTIVITIES WARRANT. TO BE COVERED OR REMOVED WHEN NOT IN USE. EXISTING SIGNS THAT WOULD INTERFERE WITH CONSTRUCTION ZONE SIGNING SHALL BE REMOVED OR COVERED.
 - DIRECTIVES FROM STANDARD PDT-1 "PAVEMENT DROP-OFF TREATMENTS" SHALL BE FOLLOWED AT ALL TIMES.
 - (1) W1-8 SHALL BE PLACED ON EVERY OTHER DRUM THRU LANE TAPERS. (1) R4-7A(R) OR (1) R4-7A(L) (AS APPLIES) SHALL BE PLACED ON EVERY FIFTH DRUM THRU TANGENT LANES. GUIDELINES FROM THE 2009 MUTCD SHALL GOVERN.

FOR ADVANCED WARNING AND DETOUR INFORMATION SEE SHEETS 260 THRU 263.

DESIGN	AKS	6/14	TULSA & ROGERS COUNTIES
DRAWN	TML	6/14	
CHECKED	KMM	6/16	
APPROVED			
SQUAD	GARVER		

SUGGESTED CONSTRUCTION TRAFFIC CONTROL (SHEET 1 OF 52)

PHASE 1A