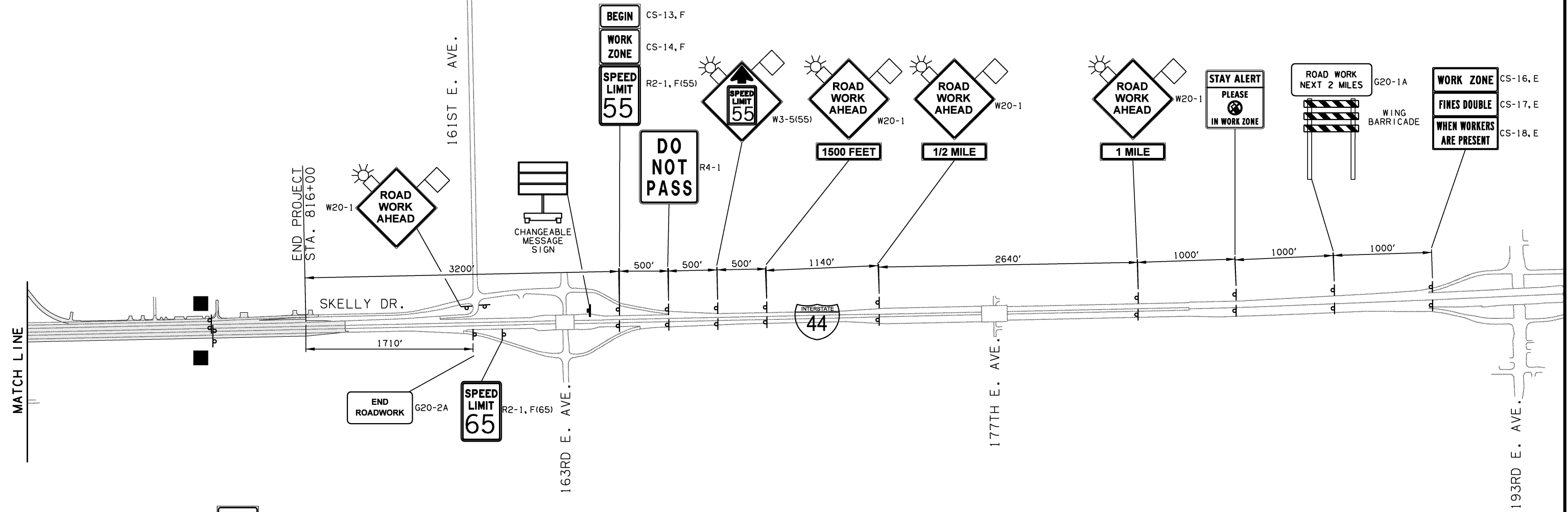


| OKLAHOMA DEPARTMENT OF TRANSPORTATION |       |               |             |           |              |      |
|---------------------------------------|-------|---------------|-------------|-----------|--------------|------|
| FED. ROAD DIST. NO.                   | STATE | JOB PIECE NO. | FISCAL YEAR | SHEET NO. | TOTAL SHEETS |      |
| 6                                     | OKLA. | 21899(04)     |             |           |              |      |
| DESCRIPTION                           |       |               |             |           |              | DATE |
| REVISIONS                             |       |               |             |           |              |      |

0 500 1000 1500  
SCALE



**WORK ZONE** CS-14, F  
**SPEED LIMIT 55** R2-1, F(55)

PLACE SIGN ASSEMBLY AT 1/2 MILE INCREMENTS  
COVER 55MPH ASSEMBLY OR REPLACE WITH 45 MPH DURING PHASE 1B AND 1C

SEE SHEETS 264-315 FOR PHASED TRAFFIC CONTROL

|          |               |      |                                       |
|----------|---------------|------|---------------------------------------|
| DESIGN   | AKS           | 6/14 | TULSA & ROGERS COUNTIES               |
| DRAWN    | TML           | 6/14 | SUGGESTED TRAFFIC CONTROL             |
| CHECKED  | KMM           | 6/16 | ADVANCED WARNING                      |
| APPROVED |               |      | (SHEET 2 OF 2)                        |
| SQUAD    | <b>GARVER</b> |      | STATE JOB NO. 21899(04) SHEET NO. 263 |