

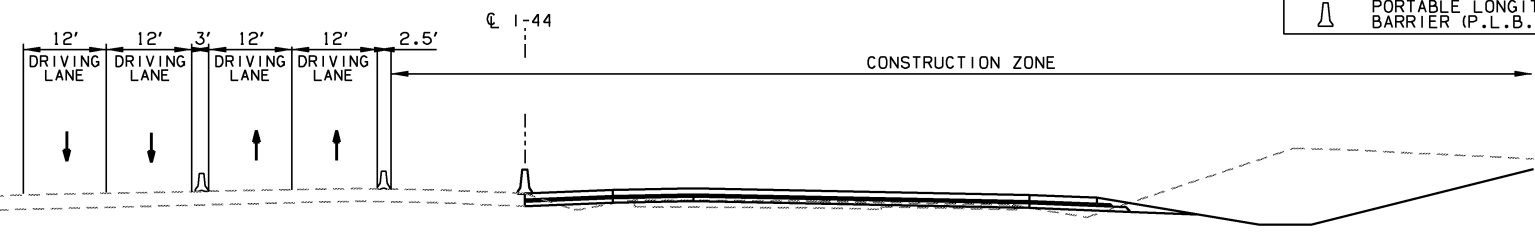
LEGEND

- TEMPORARY WIDENING
- MAINLINE
- - - EXISTING GROUND
- ▲ PORTABLE LONGITUDINAL BARRIER (P.L.B.)

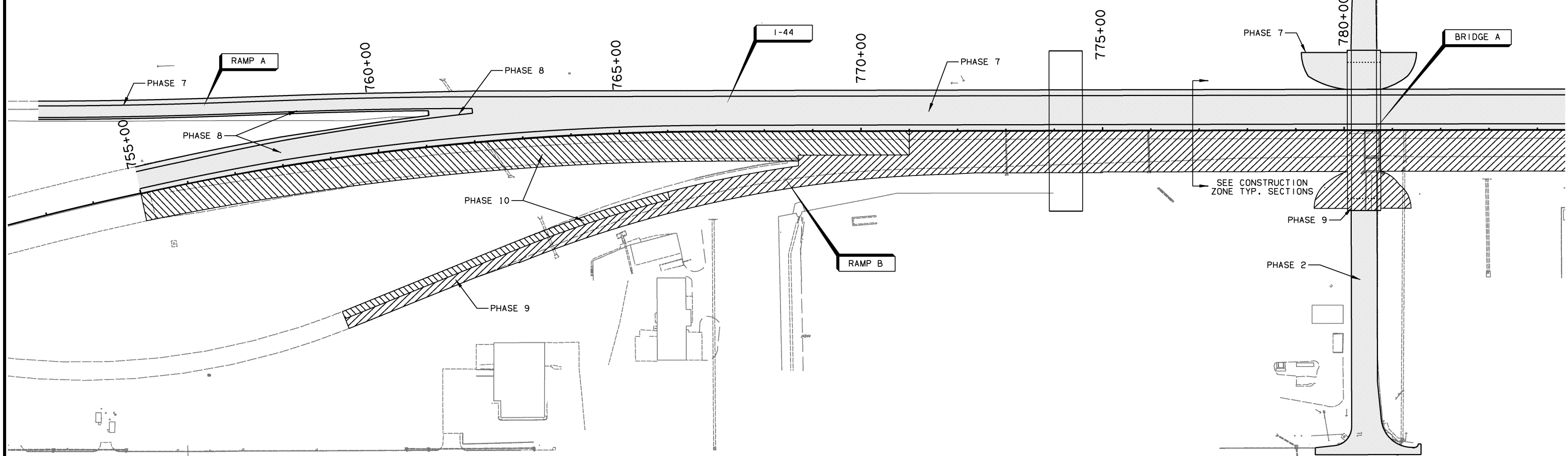
LEGEND

- ▨ PHASE 9
- ▩ PHASE 10
- COMPLETED CONSTRUCTION

0 100 200 300
SCALE



CONSTRUCTION ZONE
TYPICAL SECTION - PHASE 9 & 10



PHASE 9 (CONTINUE I-44 CONSTRUCTION, EASTBOUND)
 SHIFT ALL I-44 TRAFFIC TO THE NEWLY CONSTRUCTED WESTBOUND PAVEMENT.
 BEGIN CONSTRUCTION OF PROPOSED EASTBOUND AND RAMP B PAVEMENT.
 CONSTRUCT SOUTH PORTION OF PROPOSED CROSS STRUCTURES.
 COMPLETE CONSTRUCTION OF BRIDGE A.

PHASE 10 (CONTINUE I-44 CONSTRUCTION, EASTBOUND)
 I-44 TRAFFIC REMAINS ON NEWLY CONSTRUCTED WESTBOUND PAVEMENT.
 RELOCATE TEMPORARY EASTBOUND ON RAMP ONTO NEWLY CONSTRUCTED PAVEMENT.
 COMPLETE CONSTRUCTION OF PROPOSED EASTBOUND PAVEMENT AND PROPOSED CROSS STRUCTURES.
 COMPLETE CONSTRUCTION SOUTH HALF BRIDGE 'A'.

DESIGN	AKS	6/14	TULSA & ROGERS COUNTIES
DRAWN	TML	6/14	SUGGESTED CONSTRUCTION SEQUENCE OVERVIEW (SHEET 10 OF 14)
CHECKED	KMM	6/16	
APPROVED			
SQUAD	GARVER		
STATE JOB NO. 21899(04)			SHEET NO. 255