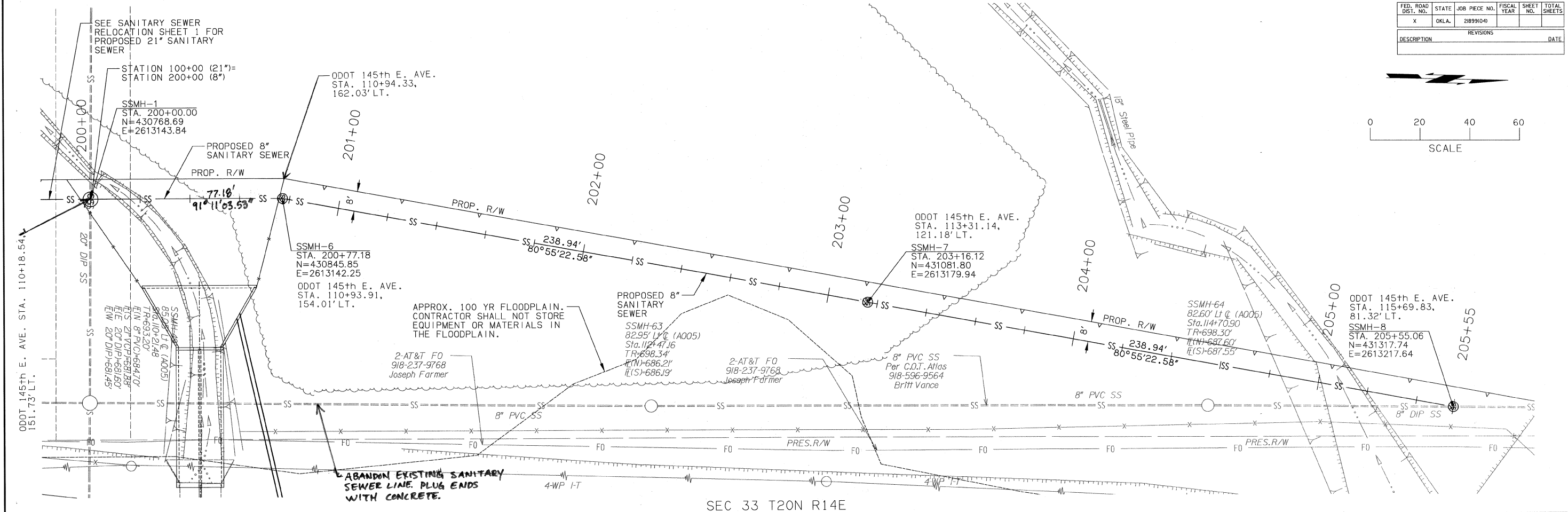
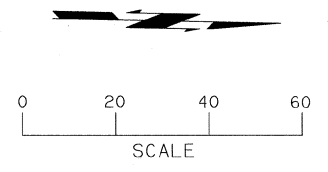


SEC 33 T20N R14E

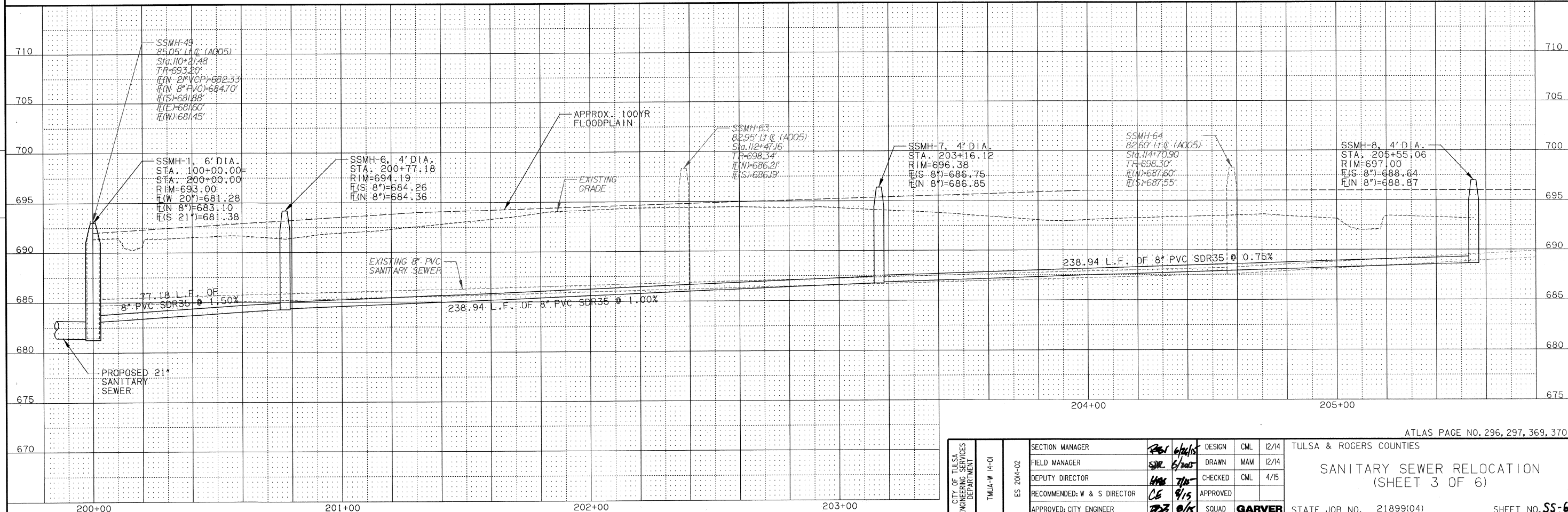
OKLAHOMA DEPARTMENT OF TRANSPORTATION

FED. ROAD DIST. NO.	STATE	JOB PIECE NO.	FISCAL YEAR	SHEET NO.	TOTAL SHEETS
X	OKLA.	21899(04)			

DESCRIPTION REVISIONS DATE



SEC 33 T20N R14E



SCALE: HORIZ. 1"=20' VERT. 1"=5'

CITY OF TULSA ENGINEERING SERVICES DEPARTMENT	TMUA-W 14-01	ES 2014-02	SECTION MANAGER DESIGN	DESIGN	CML	12/14	TULSA & ROGERS COUNTIES
			FIELD MANAGER DRAWN	DRAWN	MAM	12/14	
			DEPUTY DIRECTOR CHECKED	CHECKED	CML	4/15	
			RECOMMENDED: W & S DIRECTOR APPROVED	APPROVED			
			APPROVED: CITY ENGINEER	SQUAD	GARVER		

ATLAS PAGE NO. 296, 297, 369, 370

SANITARY SEWER RELOCATION
(SHEET 3 OF 6)

STATE JOB NO. 21899(04) SHEET NO. **SS-6**

5/28/2015 TULSA & ROGERS COUNTIES I-44